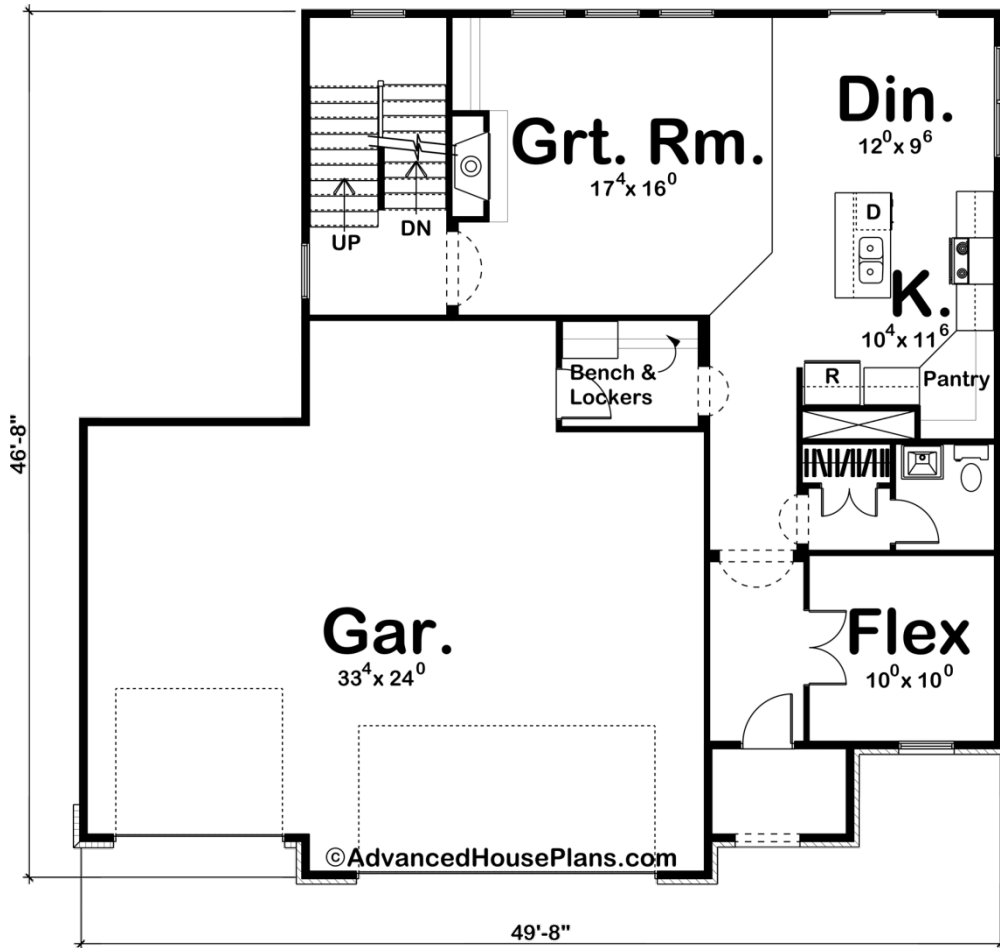


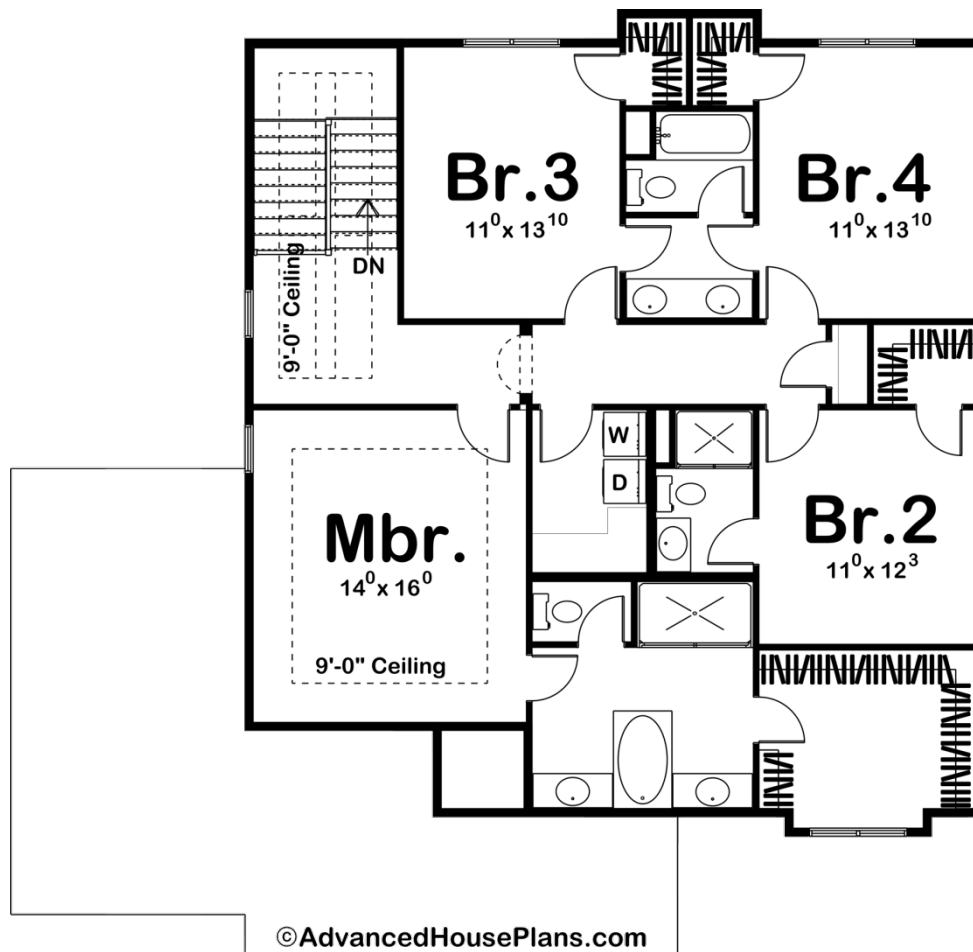
ADVANCED
HOUSE PLANS



29303 - Jenkins Data Sheet

2407 SQ FT	4 BEDS	4 BATHS	3 BAYS	50' 0" WIDE	48' 0" DEEP
---------------	-----------	------------	-----------	----------------	----------------





Construction Specs

Layout

Bedrooms	4
Bathrooms	4
Garage Bays	3

Square Footage

Main Level	1044 Sq. Ft.
Second Level	1363 Sq. Ft.
Garage	879 Sq. Ft.
Total Finished Area	2407 Sq. Ft.

Exterior Dimensions

Width	50' 0"
Depth	48' 0"
Ridge Height	31' 0"
<i>Calculated from main floor line</i>	

Default Construction Stats

Stats are unique to the individual plan.

Foundation Type	Basement
Exterior Wall Construction	2x4
Roof Pitches	6/12 Primary, 12/12 Secondary
Foundation Wall Height	9'
Main Wall Height	9'
Second Wall Height	8'

Plan Description

A long sloping gable cradles an offset entry to offer hints of English Tudor styling on this 4-bedroom, 2-story house plan. Immediately inside, a flex room is accessed through double doors off the entry hall. A coat closet and powder bath stand conveniently nearby. A few steps further reveal the island kitchen, dining area and great room, which lie open to one another and are brightened by an abundance of natural light. Just off the kitchen area, a mud room with bench and lockers provides access to and from the 3-car garage. On the second level, the master suite extends across the front of the home and features a bath area that includes his-and-her vanities, soaking tub, shower, compartmented toilet and walk-in closet, brightened by windows. Bedroom 2 has its own walk-in closet and private bath. Bedrooms 3 and 4 share a Jack-n-Jill bath. All bedrooms are served by a centrally located laundry room with counter space for sorting and folding clothes.