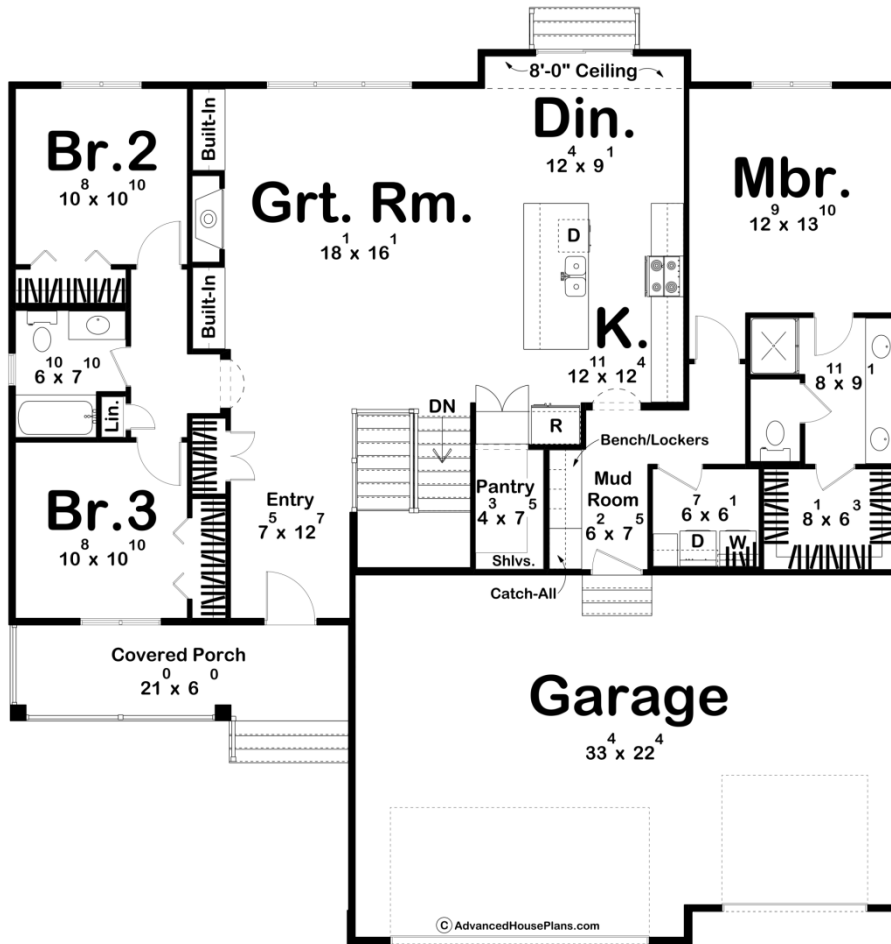
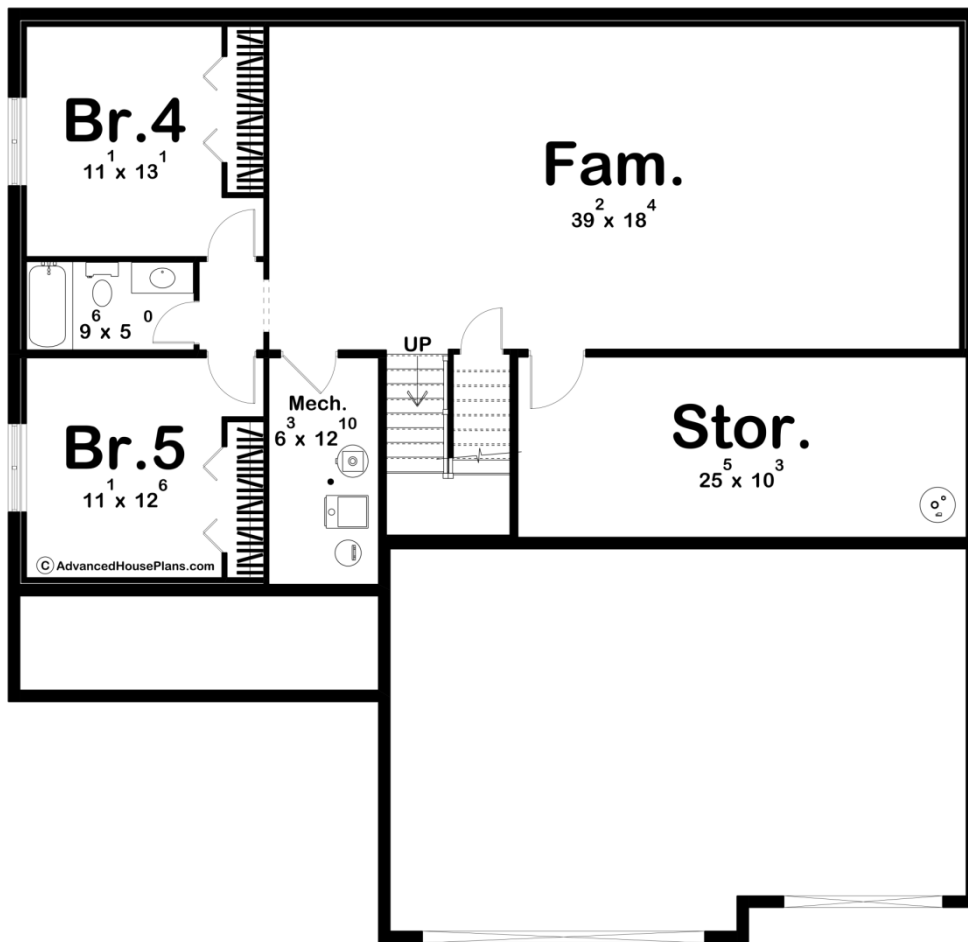




30610 - Hunziker Data Sheet

1758 SQ FT	3 BEDS	2 BATHS	3 BAYS	55' 0" WIDE	55' 0" DEEP
---------------	-----------	------------	-----------	----------------	----------------





## Construction Specs

### Layout

Bedrooms	3
Bathrooms	2
Garage Bays	3

### Square Footage

Main Level	1758 Sq. Ft.
Covered Area	126 Sq. Ft.
Garage	744 Sq. Ft.
Total Finished Area	1758 Sq. Ft.

### Exterior Dimensions

Width	55' 0"
Depth	55' 0"
Ridge Height	19' 7"
<i>Calculated from main floor line</i>	

### Default Construction Stats

*Stats are unique to the individual plan.*

Foundation Type	Basement
Exterior Wall Construction	2x4
Roof Pitches	Primary 6/12, Secondary 10/12, 4/12, 8/12
Foundation Wall Height	9'
Main Wall Height	9'

## Plan Description

This 1-story modern farmhouse design combines charm and functionality, perfect for contemporary living. The exterior features a welcoming covered front porch, ideal for relaxing or greeting guests, while the front-facing 3-car garage ensures ample parking and storage space. Inside, the open floor plan creates a seamless flow from the entryway to the great room, kitchen, and dining spaces, promoting connectivity and an airy ambiance. The great room contains a centralized fireplace along with large windows that fill the space with natural light. The kitchen includes a spacious island with seating, modern appliances, and easy access to the dining area, making it perfect for entertaining or family meals. On one side of the home, the master suite provides a private retreat, featuring a luxurious en-suite bathroom with dual vanities, a walk-in shower, and a walk-in closet. The opposite side houses two additional bedrooms that share a centrally located bathroom, offering comfort and convenience for family or guests. This thoughtful layout combines modern amenities with timeless farmhouse charm, making it a perfect choice for comfortable living. The optional finished basement adds an additional 1221 sq. ft. of finished space.