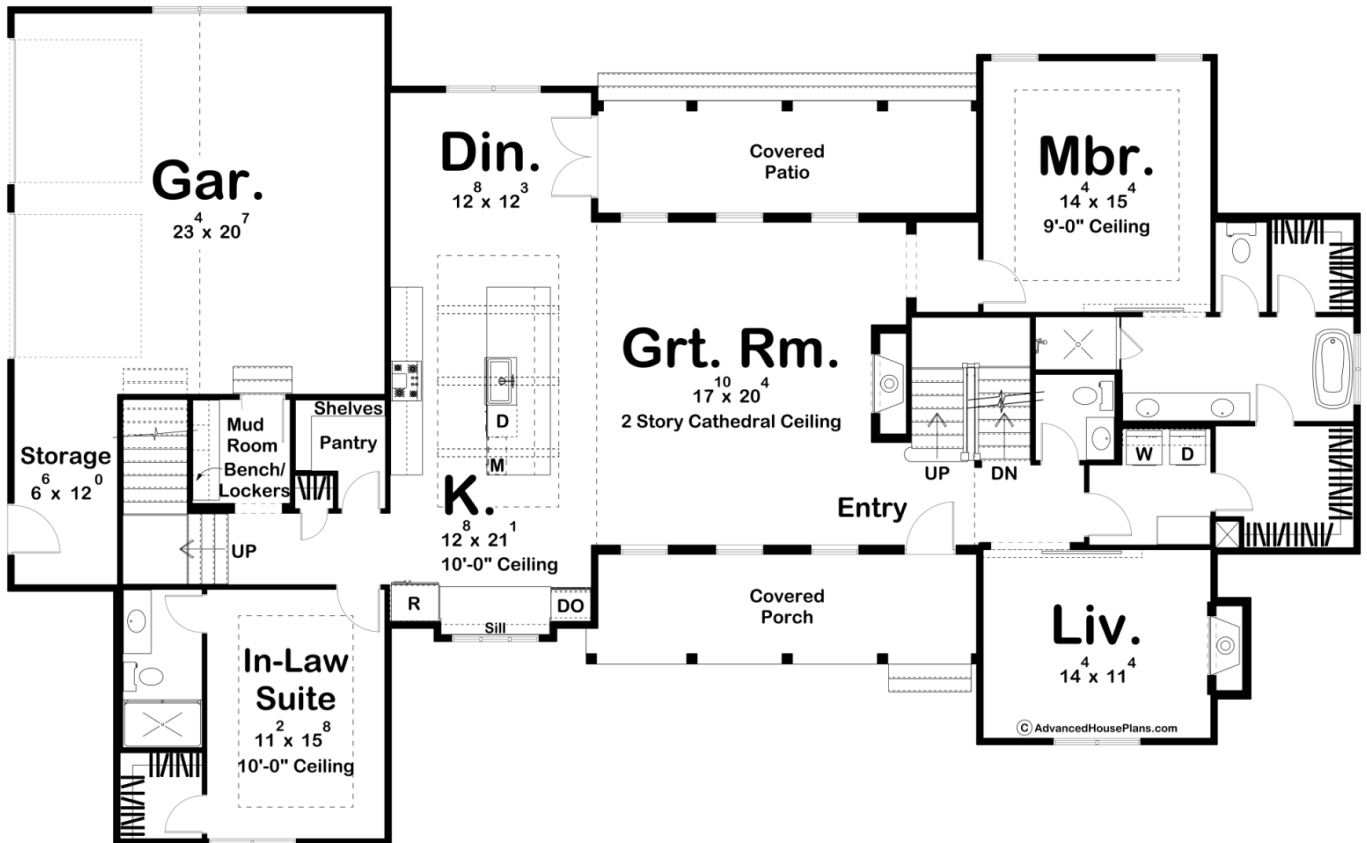
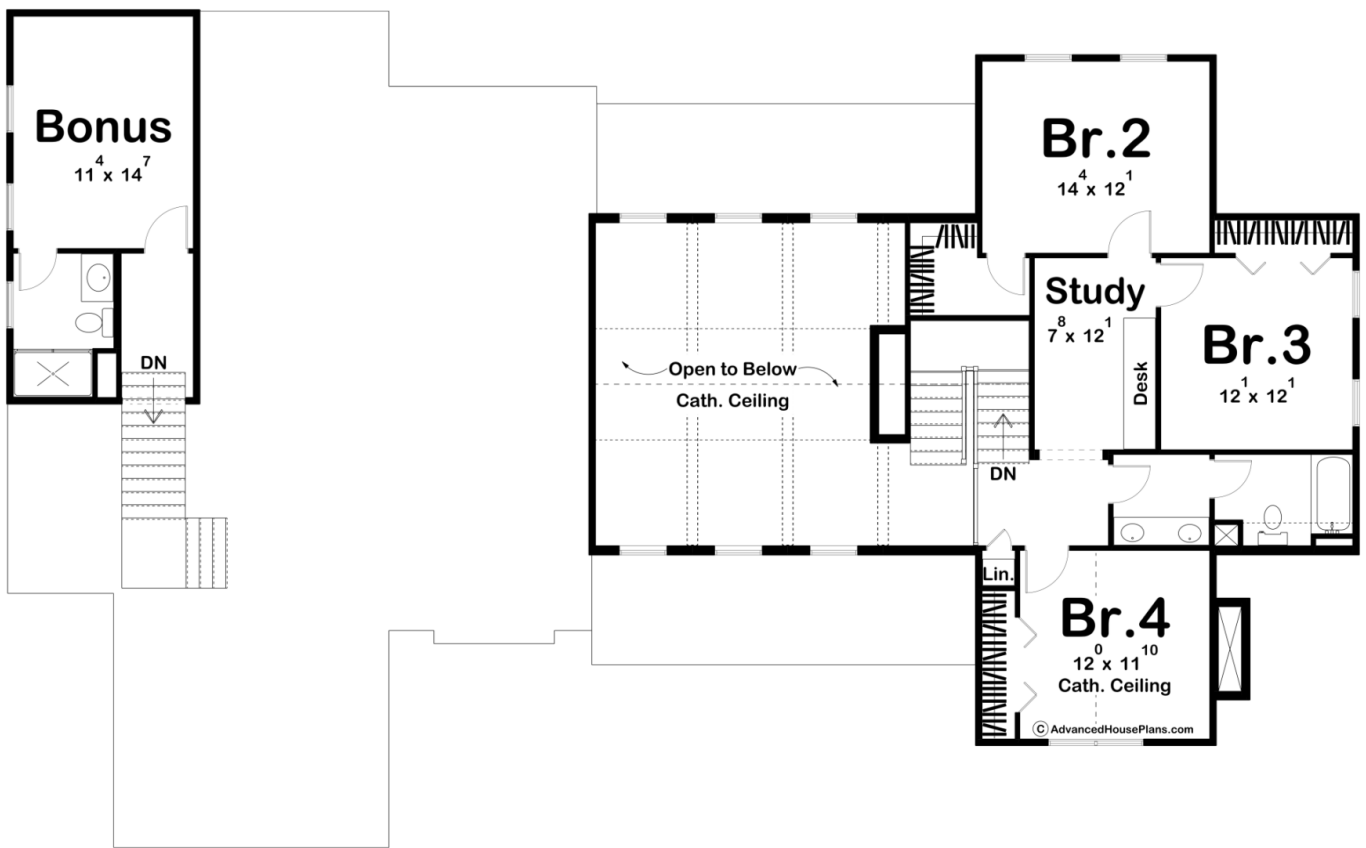




**30109 - Hudson Bend Data Sheet**

3124 SQ FT	5 BEDS	4 BATHS	2 BAYS	85' 0" WIDE	52' 8" DEEP
---------------	-----------	------------	-----------	----------------	----------------





## Construction Specs

### Layout

Bedrooms	5
Bathrooms	4
Garage Bays	2

### Square Footage

Main Level	2286 Sq. Ft.
Second Level	838 Sq. Ft.
Covered Area	341 Sq. Ft.
Garage	660 Sq. Ft.
Total Finished Area	3124 Sq. Ft.

### Exterior Dimensions

Width	85' 0"
Depth	52' 8"
Ridge Height	28' 0"
<i>Calculated from main floor line</i>	

## Default Construction Stats

*Stats are unique to the individual plan.*

Foundation Type	Basement
Exterior Wall Construction	2x4
Roof Pitches	12/12 Primary, 4/12 3/12 8/12 Secondary
Foundation Wall Height	9'
Main Wall Height	9'
Second Wall Height	8'

## Plan Description

The Hudson Bend is a stunning 1.5 story Modern Farmhouse with 2 suites on the main level. Inside, immediate impressions are made by a soaring 2-story-high, wood-beamed cathedral ceiling in the great room. A trio of tall windows complements both the front and rear walls of the great room, offering views through the front porch and rear patio. The kitchen, with expansive work island, lies beneath its own beamed ceiling and is open to the dining area. Away from the living areas, the main floor's master suite features his and her walk-in closets, and his and her vanities in the bath. The suite can be entered either through an alcove off the great room or through a more circuitous route from the laundry area. On the left side of the home, an In-Law suite has lies under a decorative trayed ceiling and has access to it's own bathroom. Upstairs, 3 bedrooms share access to a centrally located hall bathroom. Bedroom 4 receives an added sense of space from a tall cathedral ceiling. Back on the main level, the generously proportioned 2-car side load garage includes ample storage space. It accesses the home through a mudroom, complete with bench, lockers and a coat closet. An optional bonus room above the garage adds 296 sq ft and would make an excellent space for a home office or guest room.