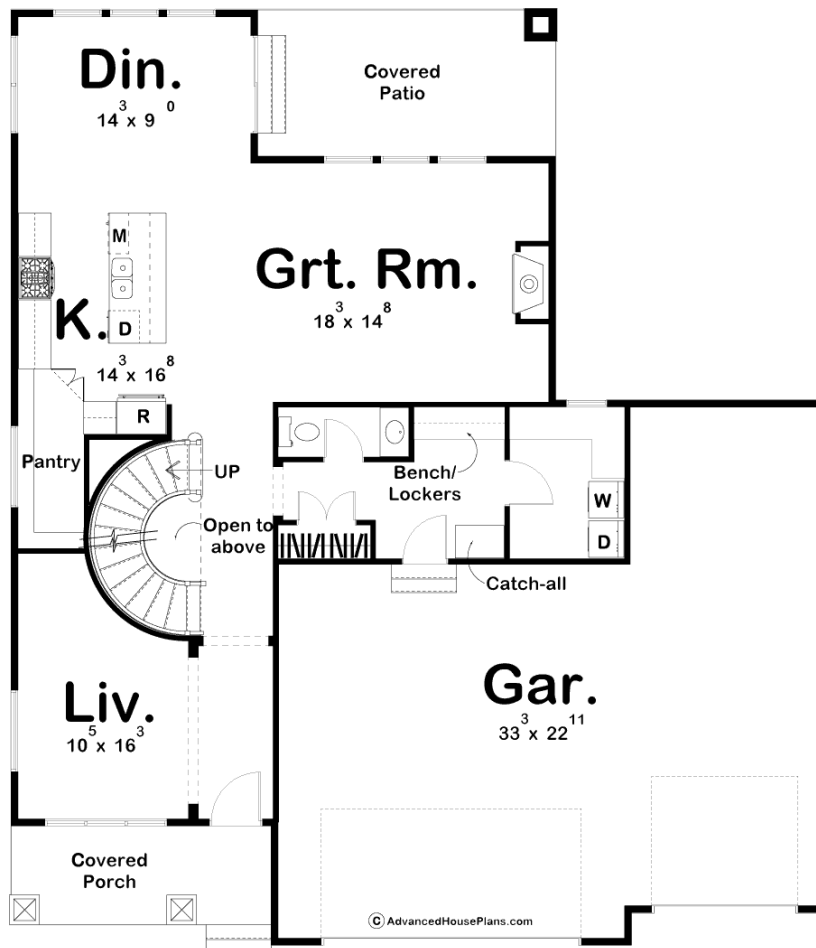
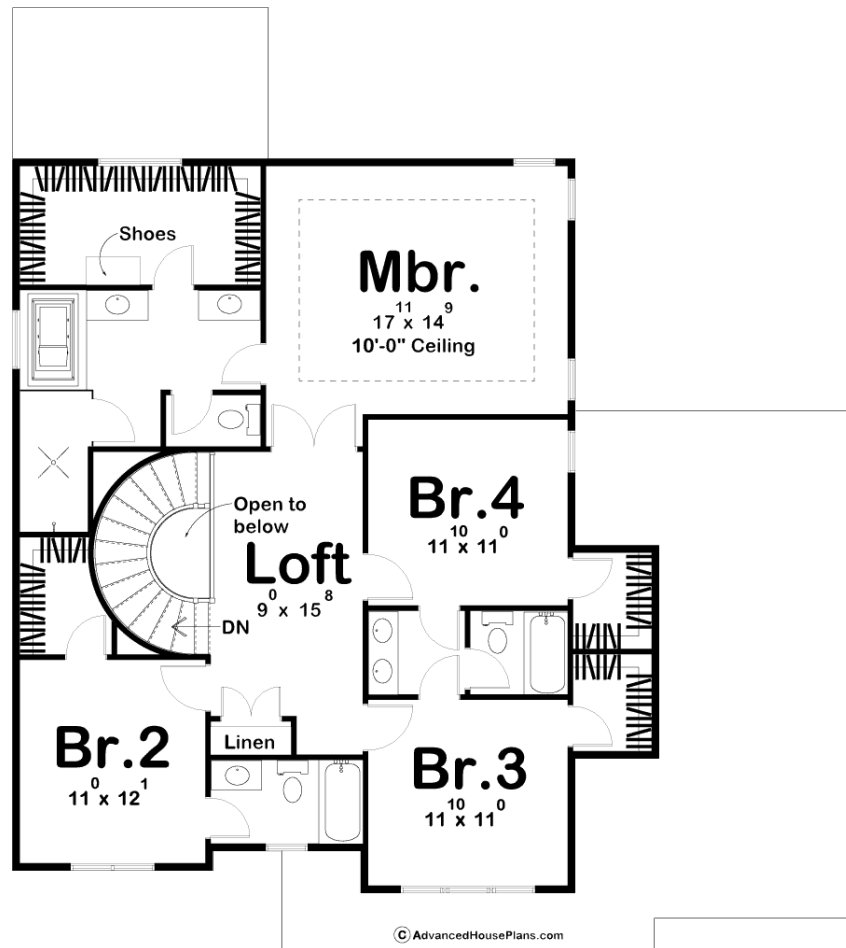




29392 - Huber Data Sheet

2674 SQ FT	4 BEDS	4 BATHS	3 BAYS	50' 0" WIDE	58' 0" DEEP
---------------	-----------	------------	-----------	----------------	----------------





Construction Specs

Layout

Bedrooms	4
Bathrooms	4
Garage Bays	3

Square Footage

Main Level	1270 Sq. Ft.
Second Level	1404 Sq. Ft.
Garage	881 Sq. Ft.
Total Finished Area	2674 Sq. Ft.

Exterior Dimensions

Width	50' 0"
Depth	58' 0"

Default Construction Stats

Stats are unique to the individual plan.

Foundation Type	Basement
-----------------	----------

Plan Description

The Huber is a 2 story Craftsman Style house plan. The front elevation features an impressive front porch with wood columns and stone bases. Upon entry you will see the living room and a curved staircase. The Great Room is warmed by a fireplace and has views to the covered patio through 3 large windows. The kitchen is great for the cook in the house and it has ample storage with the large walk in pantry. Upstairs in this 2 story house plan you have 4 bedrooms, each with their own walk in closet. Bedroom 3 and bedroom 4 share a Jack and Jill bath and bedroom 2 has its own private bath. The master suite includes a beautiful bathroom that features split vanities, whirlpool tub and a private stool room. This 2 story house plan is great for your growing family!