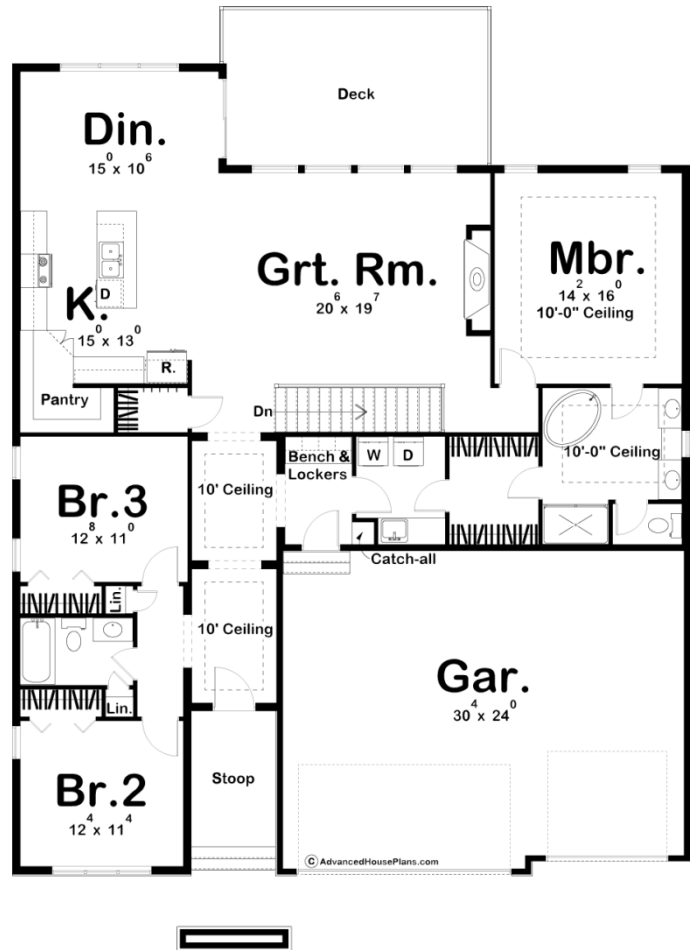




**29388 - Hinshaw Data Sheet**

2011 SQ FT	3 BEDS	2 BATHS	3 BAYS	51' 0" WIDE	71' 0" DEEP
---------------	-----------	------------	-----------	----------------	----------------



**Construction Specs**

Layout

Bedrooms

Bathrooms	2
Garage Bays	3
<b>Square Footage</b>	
Main Level	2011 Sq. Ft.
Garage	739 Sq. Ft.
Total Finished Area	2011 Sq. Ft.
<b>Exterior Dimensions</b>	
Width	51' 0"
Depth	71' 0"
Ridge Height <i>Calculated from main floor line</i>	20'
<b>Default Construction Stats</b> <i>Stats are unique to the individual plan.</i>	
Foundation Type	Basement
Exterior Wall Construction	2x4
Roof Pitches	5/12 primary, 4/12 secondary
Foundation Wall Height	9'
Main Wall Height	9'

## Plan Description

A duet of slopes at the roofline enhances the retro-contemporary styling of this Modern Mountain 3-bedroom, one-story house plan. The deeply recessed entry hall enjoys high, sculptured ceilings, and leads to an open arrangement of the kitchen, dining area, and great room, with expansive views to the outside. The master suite is separated from the main living areas for privacy but can be accessed from two separate entry points for practicality. Bedrooms 2 and 3 also enjoy privacy from the rest of the home, as they are accessed just off the entry hall. The 3-car garage is accessed through a sensible mud room with bench, lockers and handy catch-all cove.