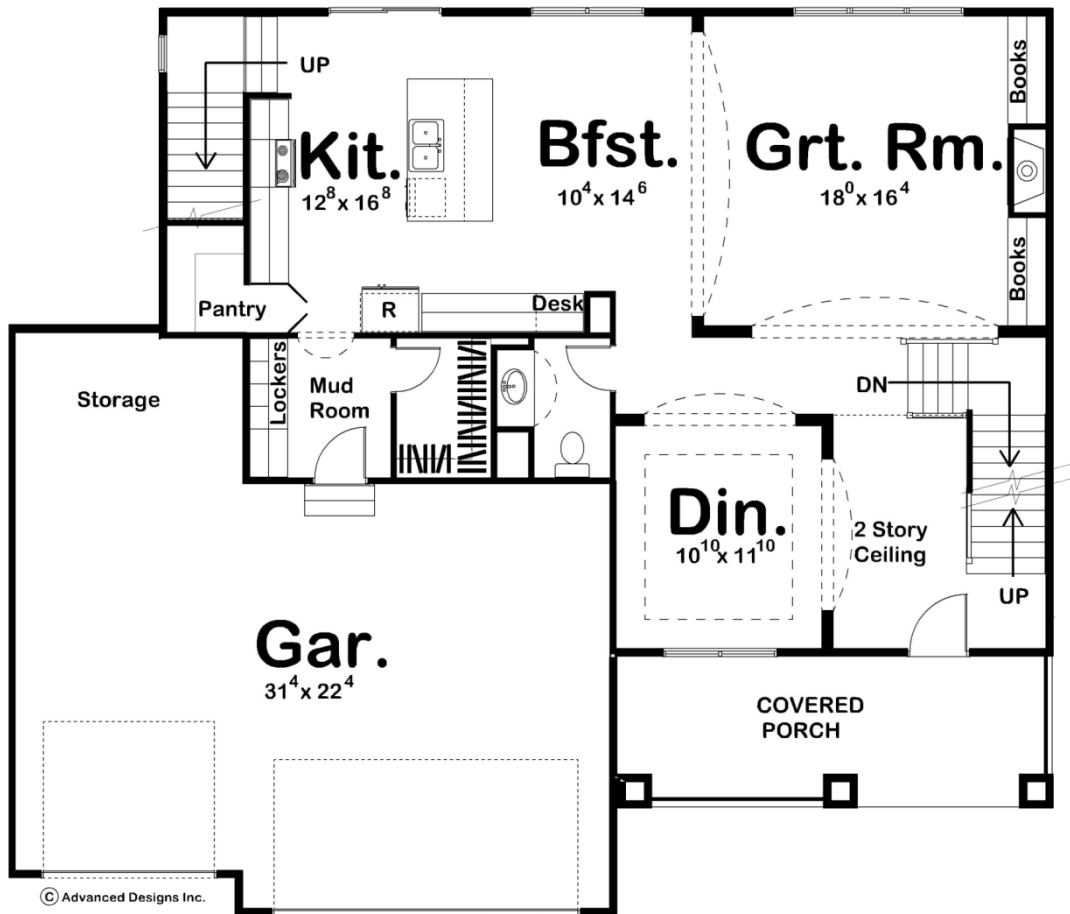
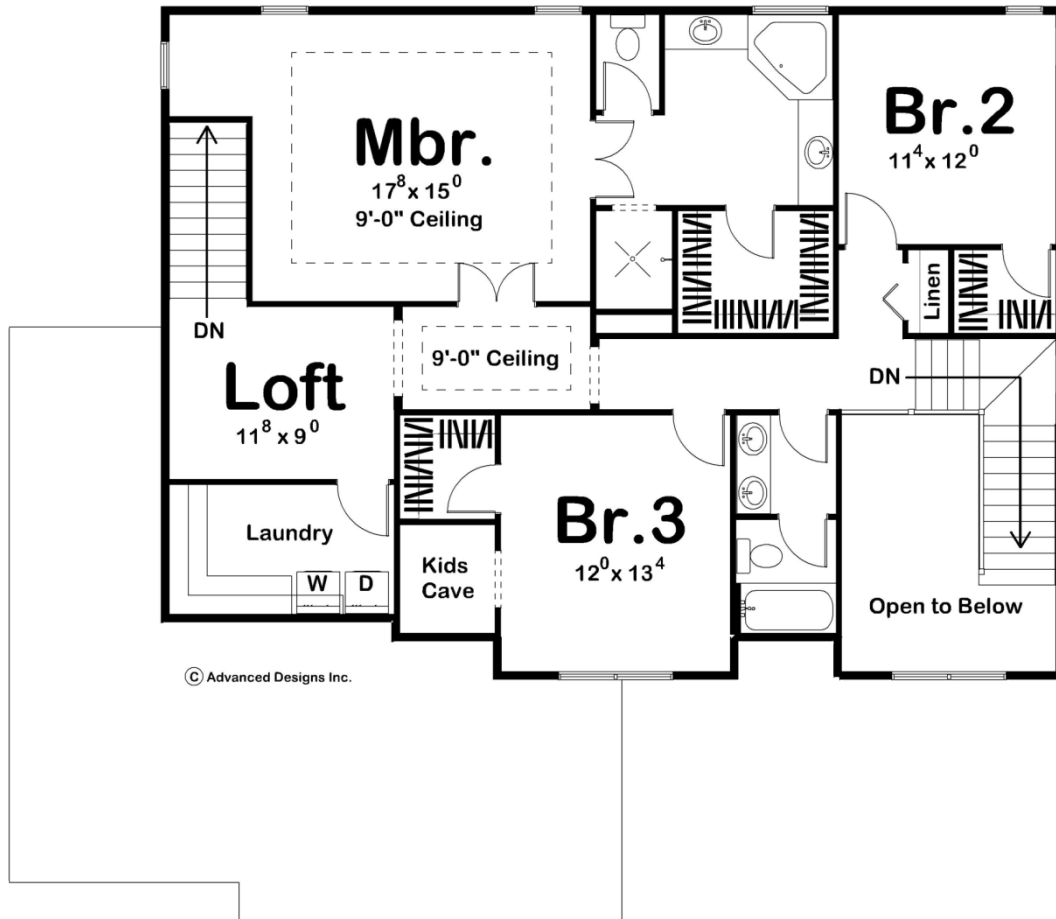




**29045 - Hilton Data Sheet**

2746 SQ FT	3 BEDS	3 BATHS	3 BAYS	55' 0" WIDE	48' 0" DEEP
---------------	-----------	------------	-----------	----------------	----------------





## Construction Specs

### Layout

Bedrooms	3
Bathrooms	3
Garage Bays	3

### Square Footage

Main Level	1362 Sq. Ft.
Second Level	1384 Sq. Ft.
Garage	800 Sq. Ft.
Total Finished Area	2746 Sq. Ft.

### Exterior Dimensions

Width	55' 0"
Depth	48' 0"

### Default Construction Stats

*Stats are unique to the individual plan.*

Foundation Type	Basement
-----------------	----------

## Plan Description

Upon entering the Hilton house plan, guests are greeted by a two-story-high entry hall with views into the formal dining room. A few steps farther inside reveal a spacious great room with a fireplace flanked by built-in bookcases. Adjacent to the great room, the breakfast area lies open to the kitchen with its breakfast island, walk-in pantry and built-in desk. Just off the kitchen, a mudroom with walk-in closet and built-in lockers accesses the three-car garage. The garage features a storage area that could opt as space for a workshop. A secondary rear stairway leads from the kitchen area to the second level. Upstairs, the master bedroom features a cozy, but naturally lit sitting area -- perfect for reading. The master bath offers pampering features that include his and her vanities, a corner tub, walk-in closet, and compartmented toilet. Bedrooms 2 and 3 have walk-in closets and share a centrally located hall bath. A second-level laundry conveniently serves all bedrooms with plenty of counter space for folding clothes.