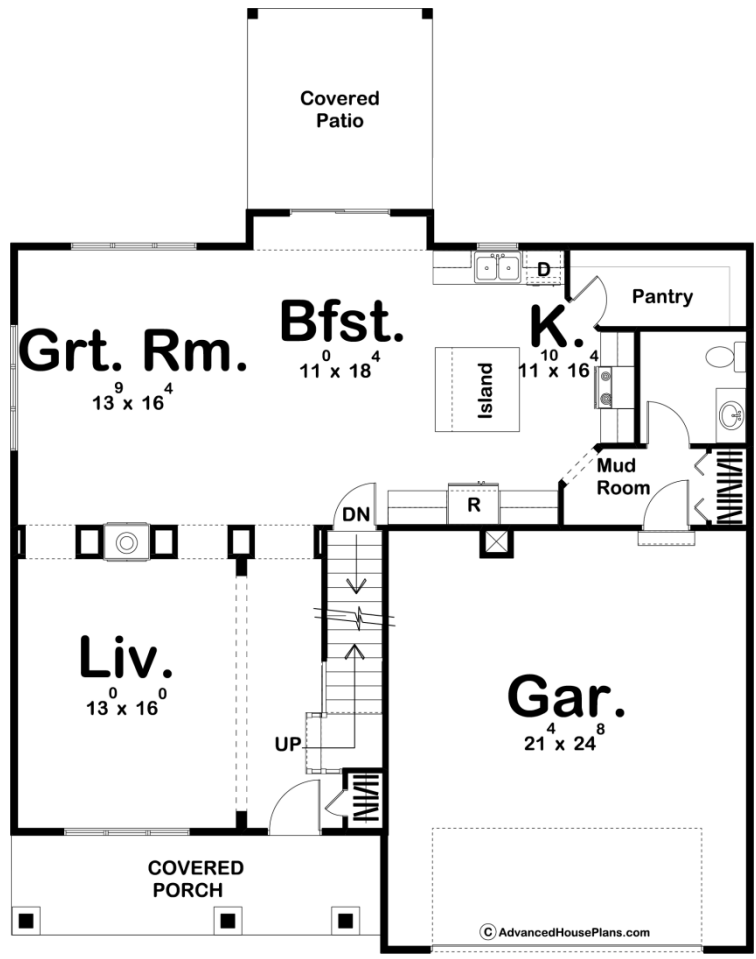
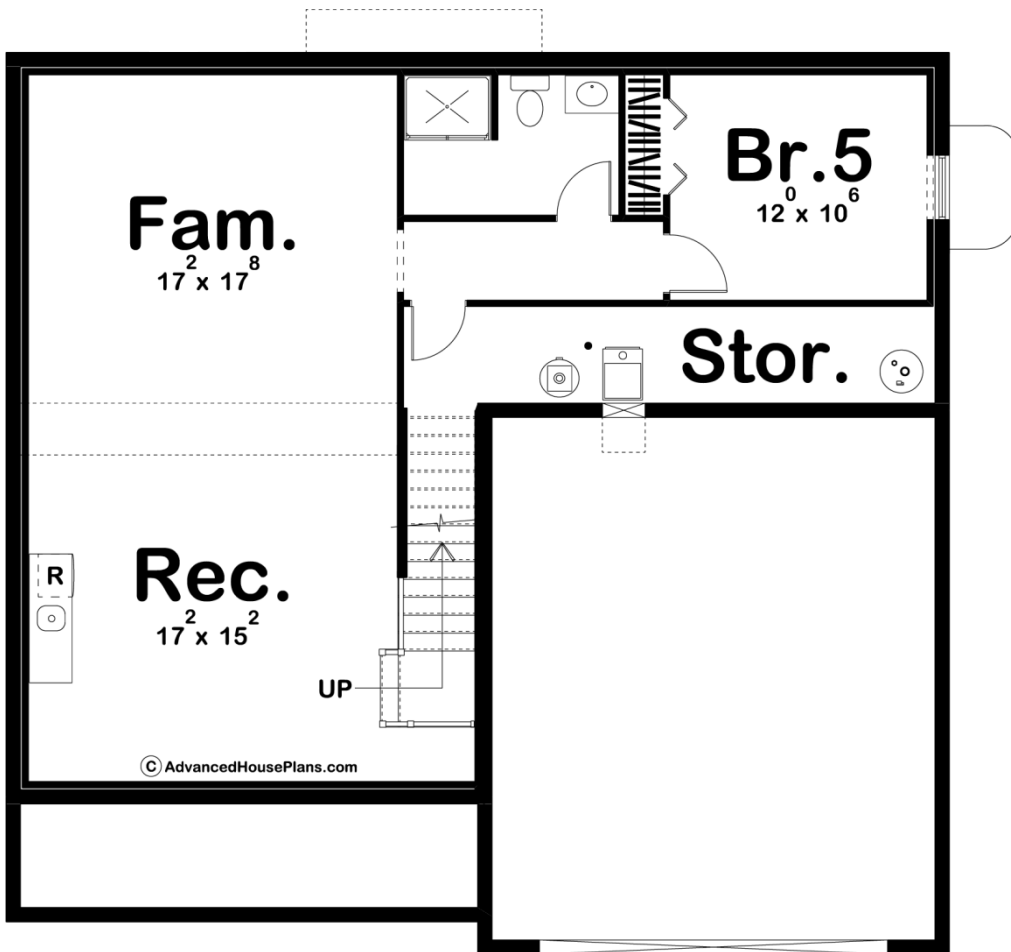
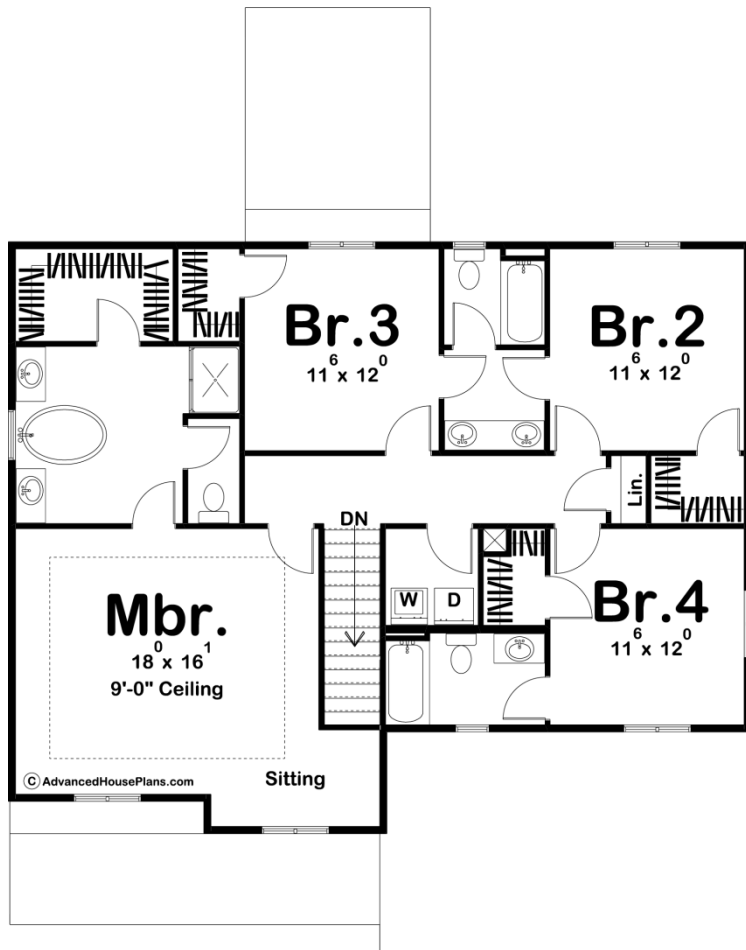




**29856 - Heritage Heights Data Sheet**

2560 SQ FT	4 BEDS	4 BATHS	2 BAYS	44' 0" WIDE	56' 0" DEEP
---------------	-----------	------------	-----------	----------------	----------------





Construction Specs

## Layout

Bedrooms	4
Bathrooms	4
Garage Bays	2

## Square Footage

Main Level	1173 Sq. Ft.
Second Level	1387 Sq. Ft.
Garage	541 Sq. Ft.
Total Finished Area	2560 Sq. Ft.

## Exterior Dimensions

Width	44' 0"
Depth	56' 0"
Ridge Height <i>Calculated from main floor line</i>	26' 0"

## Default Construction Stats

*Stats are unique to the individual plan.*

Foundation Type	Basement
Exterior Wall Construction	2x4
Roof Pitches	6/12 Primary
Foundation Wall Height	9'
Main Wall Height	9'
Second Wall Height	8'

## Plan Description

The Heritage Heights is a beautiful 2 story house plan. The Craftsman front elevation features an impressive front porch with wood columns and stone bases. Upon entry, you will see the living room with a see-through fireplace. The U shaped kitchen is great for the cook in the house and it has ample storage with the large walk-in pantry. Upstairs in this 2 story house plan, you have 4 bedrooms, each with their own walk-in closet. Bedroom 2 and bedroom 3 share a Jack and Jill bath and bedroom 4 has its own private bath. The master bedroom suite has an oversized bedroom for this size home and a beautiful bathroom that features split vanities, a whirlpool tub, and a private stool room.