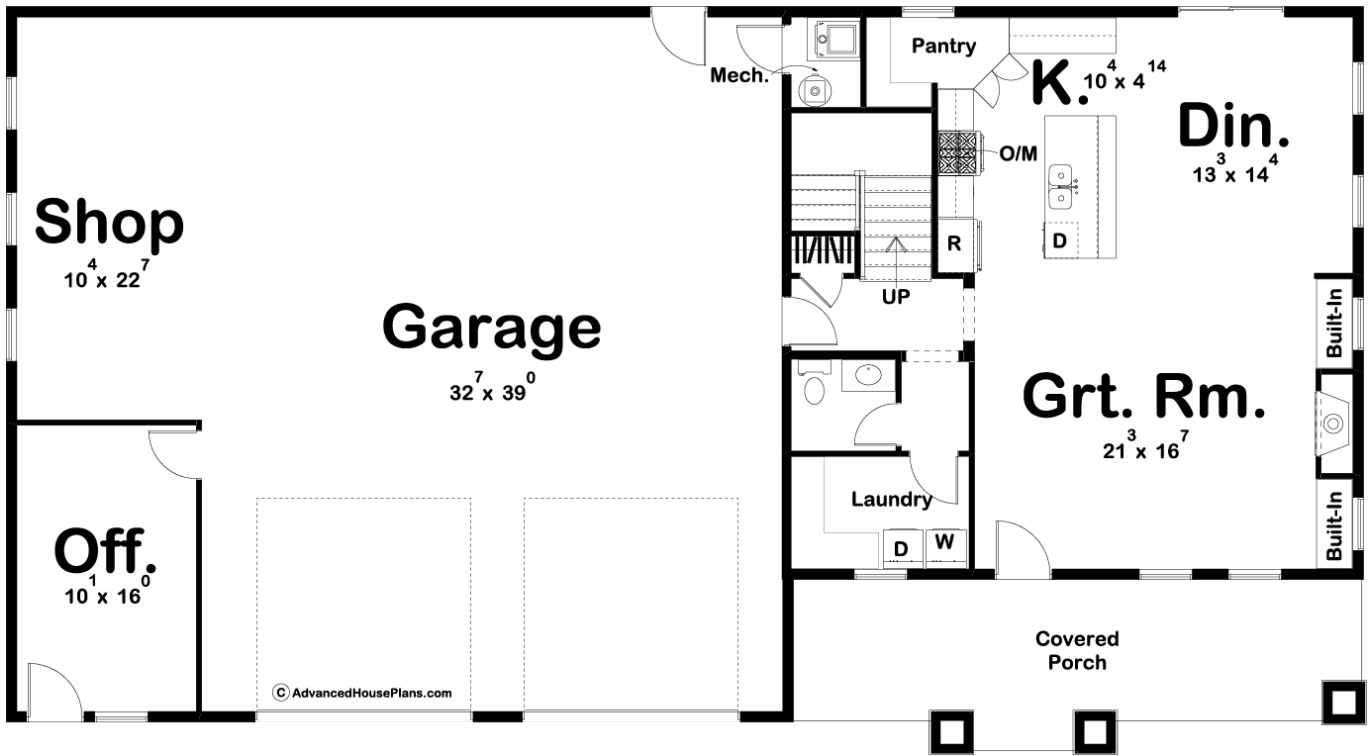
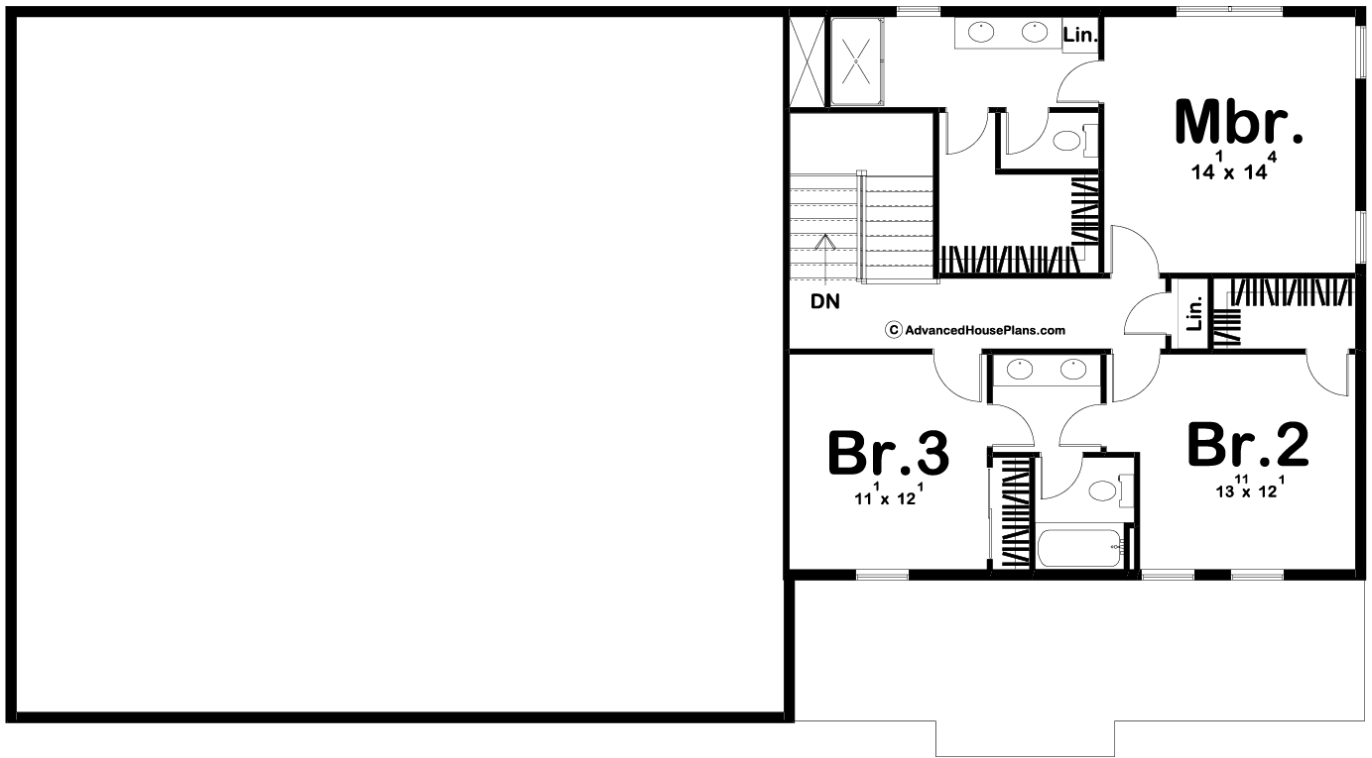




29769 - Helena Data Sheet

1994 SQ FT	3 BEDS	3 BATHS	2 BAYS	76' 0" WIDE	41' 0" DEEP
---------------	-----------	------------	-----------	----------------	----------------





Construction Specs

Layout

Bedrooms	3
Bathrooms	3
Garage Bays	2

Square Footage

Main Level	1037 Sq. Ft.
Second Level	957 Sq. Ft.
Garage	1597 Sq. Ft.
Total Finished Area	1994 Sq. Ft.

Exterior Dimensions

Width	76' 0"
Depth	41' 0"
Ridge Height	28' 0"
<i>Calculated from main floor line</i>	

Default Construction Stats

Stats are unique to the individual plan.

Foundation Type	Slab
Exterior Wall Construction	Post Frame
Roof Pitches	6/12 Primary
Main Wall Height	9'
Second Wall Height	8'

Plan Description

If you are looking for an efficient way to build a house, look no further than a post frame home. The Helena plan provides a great place to live as well as work. On the work side, the house includes an oversized 2 car garage with a shop and office. Inside the home, the great room is warmed by a fireplace that is flanked by built-in bookshelves. The kitchen includes a large island and a walk-in pantry. Upstairs you'll find the master suite which includes his/her vanities, an enclosed toilet, and a walk-in closet.