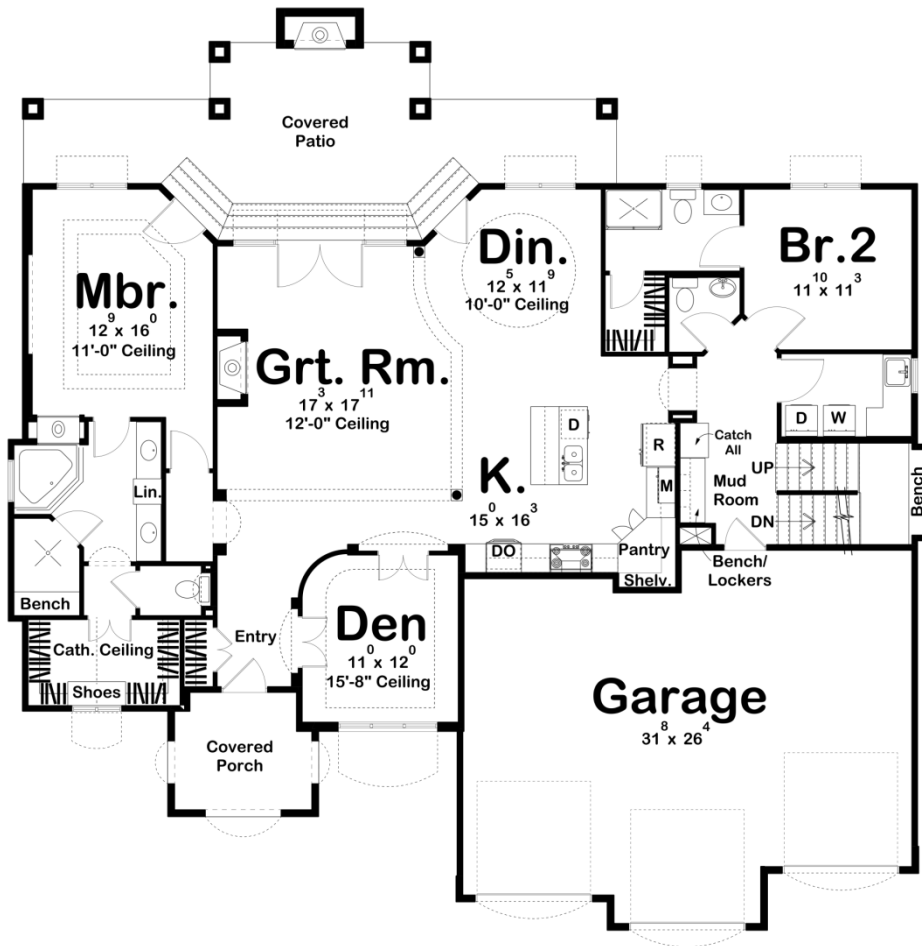
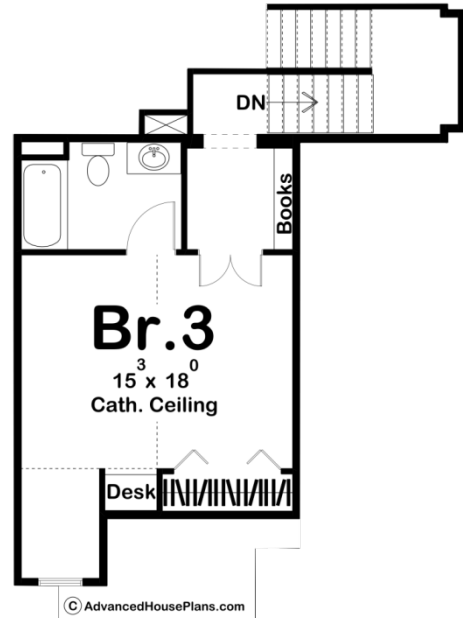




**29147 - Heinman Data Sheet**

2392 SQ FT	3 BEDS	4 BATHS	3 BAYS	65' 0" WIDE	65' 0" DEEP
---------------	-----------	------------	-----------	----------------	----------------





## Construction Specs

### Layout

Bedrooms	3
Bathrooms	4
Garage Bays	3

### Square Footage

Main Level	1949 Sq. Ft.
Second Level	443 Sq. Ft.
Garage	757 Sq. Ft.
Total Finished Area	2392 Sq. Ft.

### Exterior Dimensions

Width	65' 0"
Depth	65' 0"
Ridge Height	27' 0"
<i>Calculated from main floor line</i>	

## Default Construction Stats

*Stats are unique to the individual plan.*

Foundation Type	Basement
Exterior Wall Construction	2x4
Roof Pitches	12/12 F-B, 8/12 S-S
Foundation Wall Height	9'
Main Wall Height	9'
Second Wall Height	8'

## Plan Description

A beautiful blend of exterior textures harmonizes beneath a chorus of gables on this traditional-style, 1-1/2 story house plan. Inside, double doors in the entry hall reveal a stately den, sporting a ceiling height of 15'-9." A few steps farther inside brings guests into the great room, with its fireplace, built-in bookshelves, and views to the rear covered deck's fireplace. The breakfast area and kitchen lie seamlessly to the side of the great room for easy entertaining. The kitchen features a large island workspace and walk-in pantry. The breakfast area accesses the rear deck for dining outdoors. Just off the kitchen, a utility area intercepts traffic from the 3-car garage and includes two closets and a built-in bench. A laundry room with counters and sink lies adjacent to this area. Nearby, Bedroom 2 is privately tucked away and includes a walk-in closet and bath. On the opposite side of the home, the master suite is secluded for privacy. The bedroom has beautiful ceiling details and accesses the rear deck. The bath area features his-and-her vanities, corner soaking tub, walk-in shower, compartmented toilet and roomy walk-in closet with built-in dressing seat. The upper level is reserved for bedroom 3, which features a walk-in closet, built-in bench with storage, built-in desk, and a private bath. Just outside the bedroom, a built-in bookshelf holds classics that can be enjoyed on the staircase's mid-level landing window seat. As always any Advanced House Plans home plan can be customized to fit your needs with our alteration department. Whether you need to add another garage stall, change the front elevation, stretch the home larger or just make the home plan more affordable for your budget we can do that and more for you at Ahp.