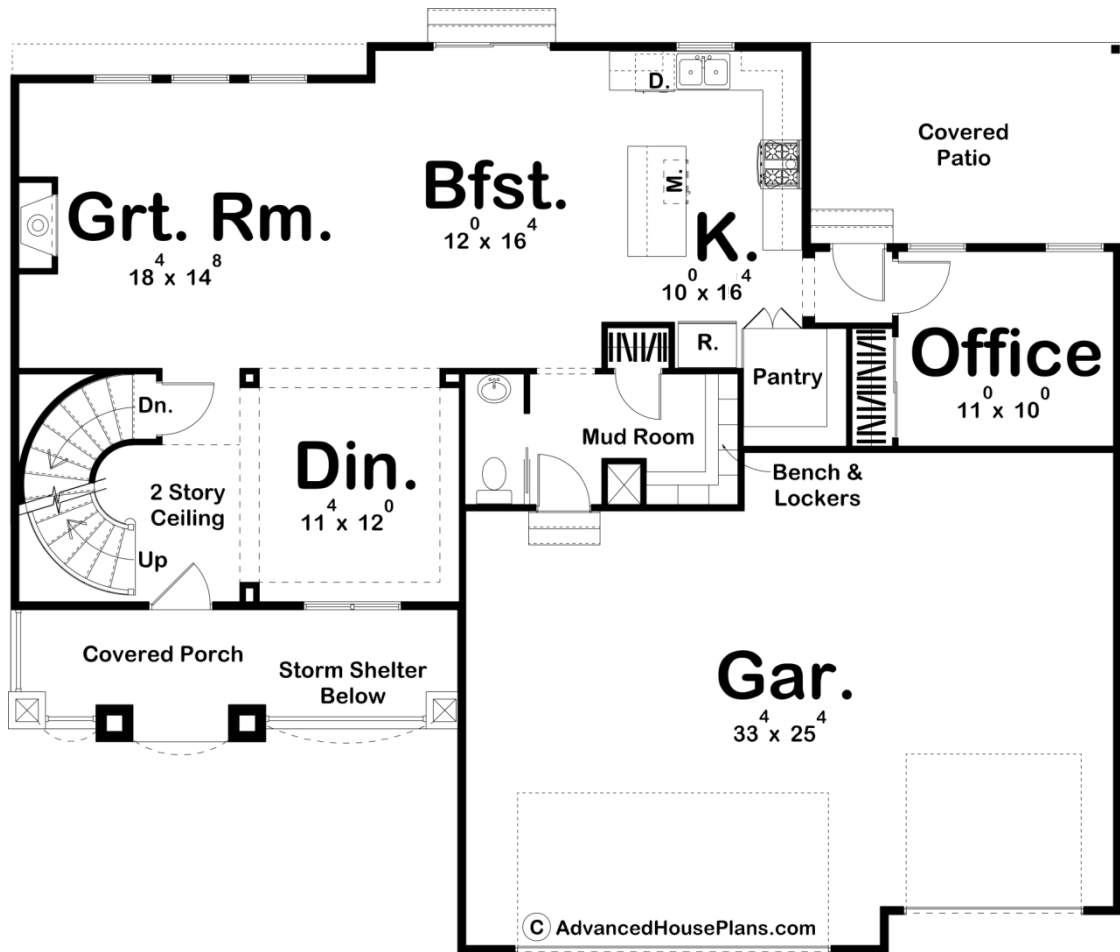
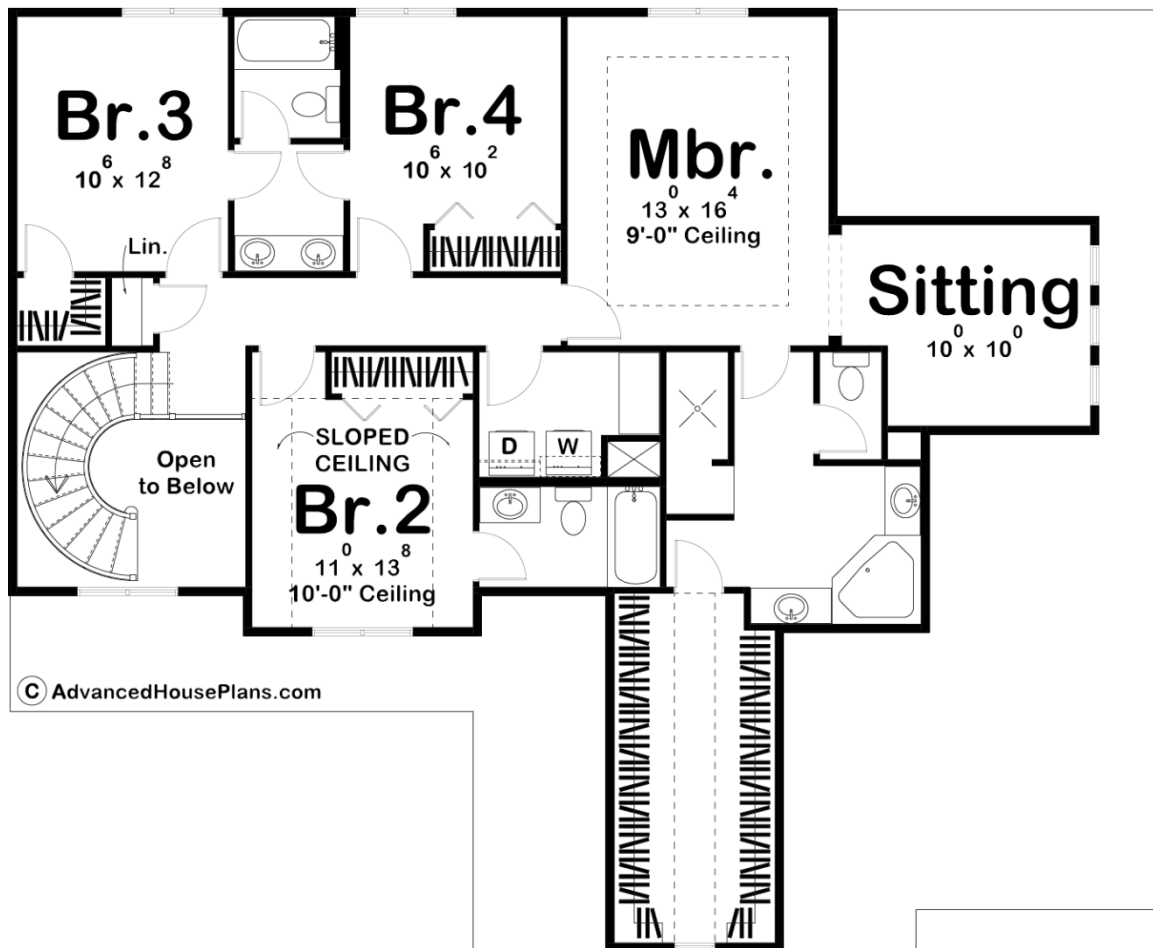




**29369 - Hartmann Data Sheet**

|               |           |            |           |                |                |
|---------------|-----------|------------|-----------|----------------|----------------|
| 2664<br>SQ FT | 4<br>BEDS | 4<br>BATHS | 3<br>BAYS | 57' 0"<br>WIDE | 47' 0"<br>DEEP |
|---------------|-----------|------------|-----------|----------------|----------------|





## Construction Specs

### Layout

|             |   |
|-------------|---|
| Bedrooms    | 4 |
| Bathrooms   | 4 |
| Garage Bays | 3 |

### Square Footage

|                     |              |
|---------------------|--------------|
| Main Level          | 1231 Sq. Ft. |
| Second Level        | 1433 Sq. Ft. |
| Garage              | 803 Sq. Ft.  |
| Total Finished Area | 2664 Sq. Ft. |

### Exterior Dimensions

|  |        |
|--|--------|
| Width                                  | 57' 0" |
| Depth                                  | 47' 0" |
| Ridge Height                           | 32' 0" |
| <i>Calculated from main floor line</i> |        |

## Default Construction Stats

*Stats are unique to the individual plan.*

|                            |                                |
|----------------------------|--------------------------------|
| Foundation Type            | Basement                       |
| Exterior Wall Construction | 2x4                            |
| Roof Pitches               | Primary 12/12, Secondary 10/12 |
| Foundation Wall Height     | 9'                             |
| Main Wall Height           | 9'                             |
| Second Wall Height         | 8'                             |

## Plan Description

This 2 story house plan is adorned with features that are more commonly found in much larger designs. Just inside, guests are greeted by a soaring two-story-high entry, curved staircase and an elegant, open dining area, defined by columns and ceiling details. An expansive great room lies open to the breakfast area and kitchen, complete with island, walk-in pantry and ample counter space. A privately situated office area is located just inside from a rear covered patio. On the second level, a surprising array of amenities continue to be found. The master suite, for example, features a generously sized sitting area with plenty of natural light for reading or crafting. The adjacent bath area includes his and her vanities separated by a corner soaking tub. The bath also includes a walk-in shower, compartmented toilet and a deep, walk-in closet with window. Bedroom 2 features a sloped ceiling and private bath. Bedrooms 3 and 4 share a Jack-in-Jill bath with dual vanities and compartmented toilet and tub. A centrally located laundry is easily accessed by all bedrooms. The upstairs landing offers views to the main-floor entry below. An added feature about this house plan to note: This design includes a storm shelter beneath the front porch.