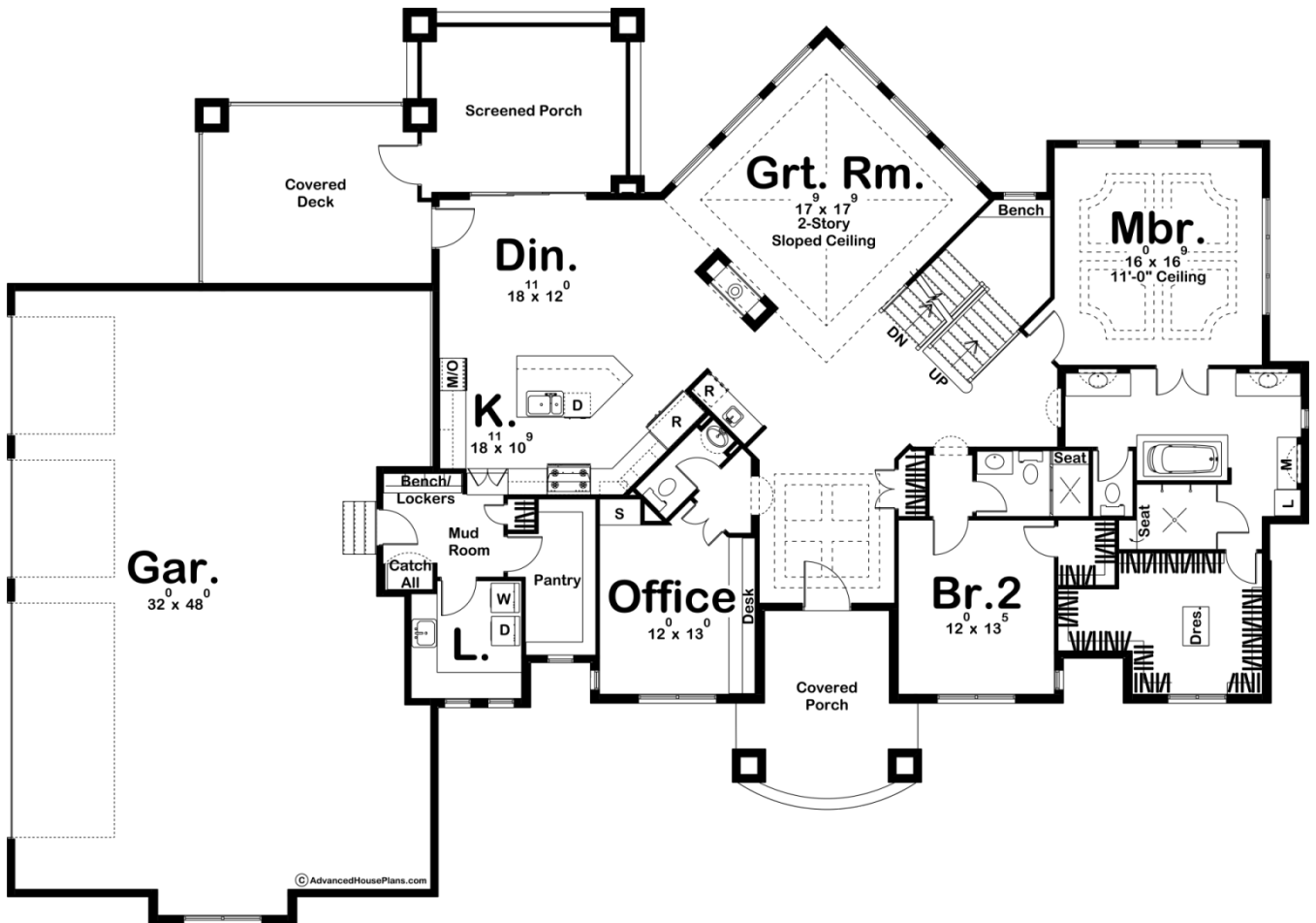
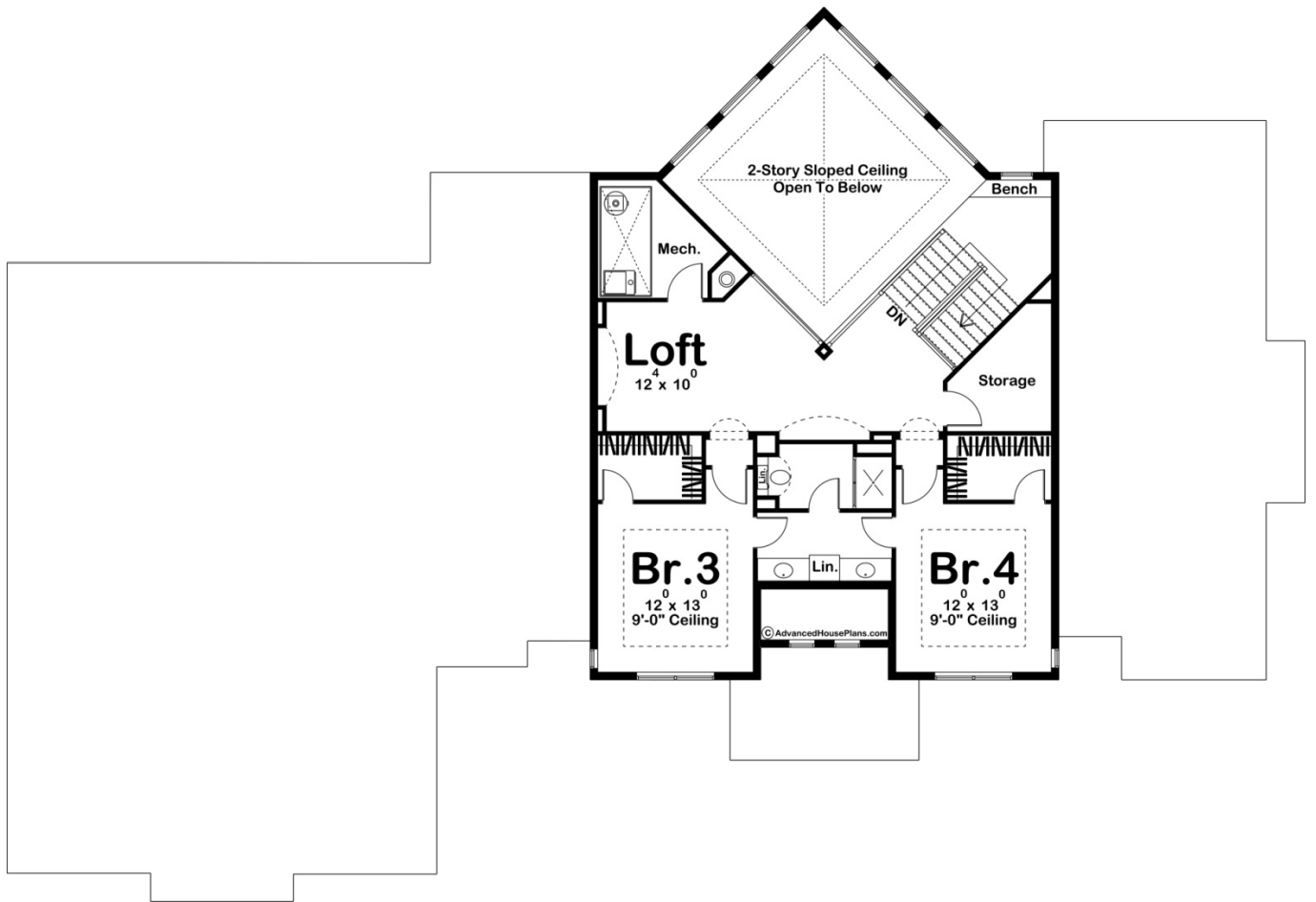




**29512 - Harrington Data Sheet**

3634 SQ FT	4 BEDS	4 BATHS	4 BAYS	100' 0" WIDE	68' 0" DEEP
---------------	-----------	------------	-----------	-----------------	----------------





## Construction Specs

### Layout

Bedrooms	4
Bathrooms	4
Garage Bays	4

### Square Footage

Main Level	2759 Sq. Ft.
Second Level	875 Sq. Ft.
Garage	1526 Sq. Ft.
Total Finished Area	3634 Sq. Ft.

### Exterior Dimensions

Width	100' 0"
Depth	68' 0"

### Default Construction Stats

*Stats are unique to the individual plan.*

Foundation Type	Basement
-----------------	----------

Exterior Wall Construction	2x4
Foundation Wall Height	10'
Main Wall Height	10'
Second Wall Height	8'

## Plan Description

The Harrington plan is a refreshing Modern Prairie 1.5 story house with clean lines and sharp details. Not without warmth and comfort, the plan features open living spaces with an impressive great room with a 2 story sloped ceiling and a double sided fireplace. The kitchen features a large island with a breakfast bar and a massive walk-in pantry with built-in shelves. The dining room leads to a screened porch and covered deck that is perfect for entertaining guests. The main floor also includes an office with a built-in desk. The master suite offers a large bathroom with his and her vanities and a walk-in shower and soaking tub. Just off the master bath is a massive walk-in closet with a built-in dresser. A large 4 car garage accesses the home through the mud room which has access to a large laundry room with its own sink. Upstairs you will find a large loft space that overlooks the great room. Bedrooms 2 and 3 share a bathroom and each has their own and walk-in closets.