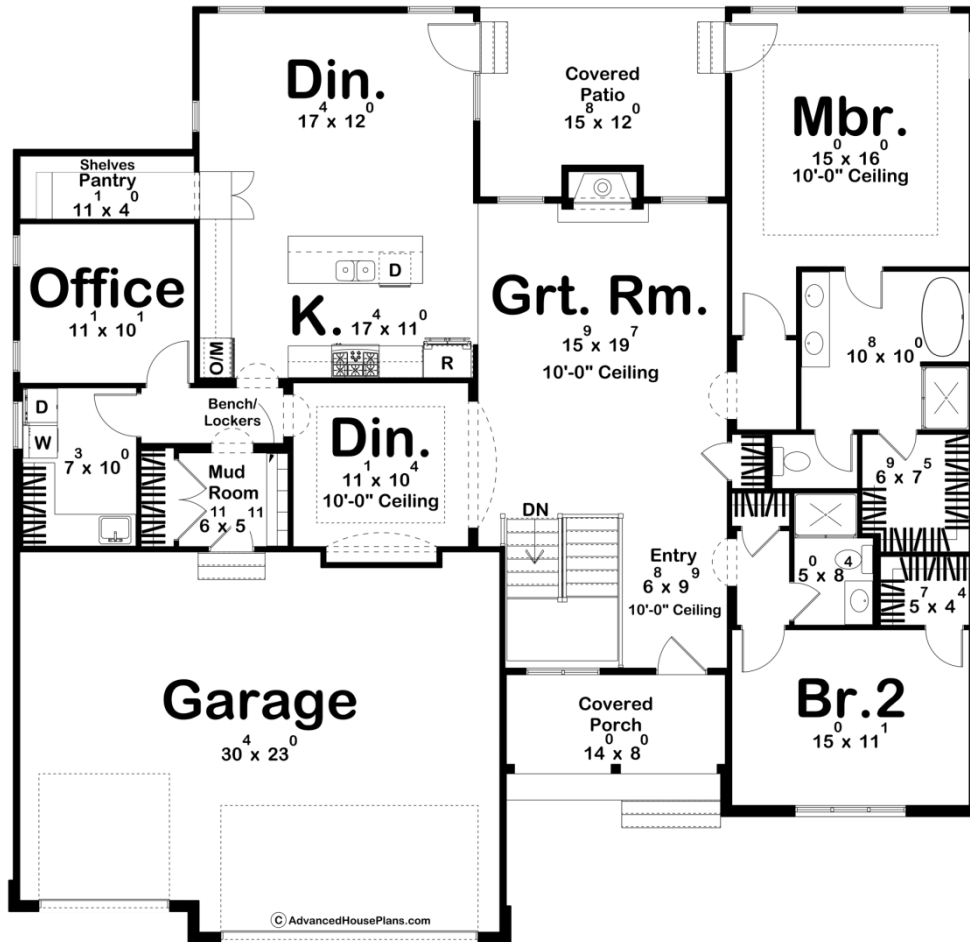
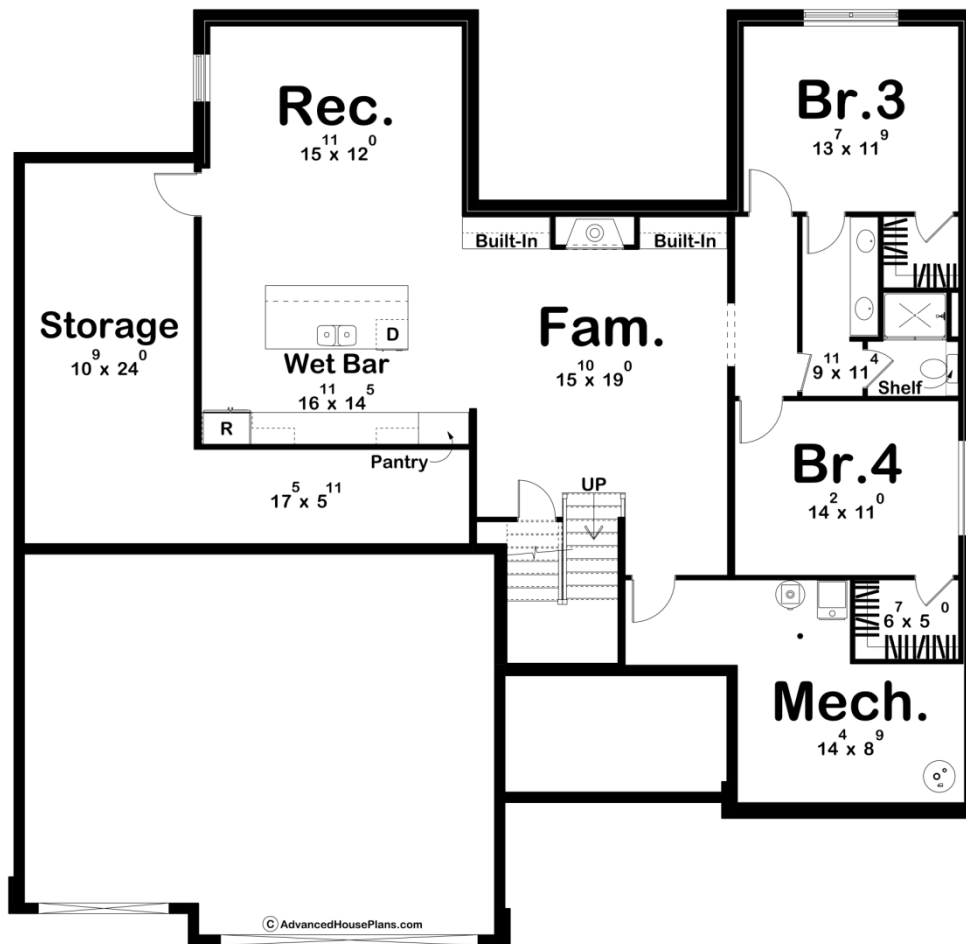




**29031 - Harding Data Sheet**

|               |           |            |           |                |                |
|---------------|-----------|------------|-----------|----------------|----------------|
| 2164<br>SQ FT | 2<br>BEDS | 2<br>BATHS | 3<br>BAYS | 60' 8"<br>WIDE | 58' 8"<br>DEEP |
|---------------|-----------|------------|-----------|----------------|----------------|





## Construction Specs

### Layout

|             |   |
|-------------|---|
| Bedrooms    | 2 |
| Bathrooms   | 2 |
| Garage Bays | 3 |

### Square Footage

|                     |              |
|---------------------|--------------|
| Main Level          | 2164 Sq. Ft. |
| Covered Area        | 300 Sq. Ft.  |
| Garage              | 724 Sq. Ft.  |
| Total Finished Area | 2164 Sq. Ft. |

### Exterior Dimensions

|       |        |
|-------|--------|
| Width | 60' 8" |
| Depth | 58' 8" |

### Default Construction Stats

*Stats are unique to the individual plan.*

|                 |          |
|-----------------|----------|
| Foundation Type | Basement |
|-----------------|----------|

|                            |                               |
|----------------------------|-------------------------------|
| Exterior Wall Construction | 2x4                           |
| Roof Pitches               | Primary 6/12, Secondary 10/12 |
| Foundation Wall Height     | 9'                            |
| Main Wall Height           | 9'                            |

## Plan Description

Welcome to the Harding! This charming abode seamlessly blends classic farmhouse elements with contemporary design features, creating a timeless and inviting atmosphere. Situated on a spacious plot, this 2-bedroom, 2-bathroom dwelling boasts meticulous craftsmanship and thoughtful details throughout. As you approach, you're greeted by the striking exterior adorned with board and batten siding, accented by elegant brick details that add character and warmth. The prominent standing seam metal roof not only enhances the architectural appeal but also promises durability and longevity. Upon entering through the welcoming front porch, you step into the heart of the home—a light-filled open concept living space that seamlessly integrates the living room, kitchen, and dining area. Large windows flood the space with natural light, creating an airy and inviting ambiance. The living room, anchored by a cozy fireplace, offers a perfect spot for relaxation and gatherings with loved ones. The gourmet kitchen features sleek quartz countertops, custom cabinetry, and top-of-the-line stainless steel appliances. A spacious island with seating provides ample space for meal prep and casual dining, while the adjacent dining area offers a picturesque setting for enjoying meals with family and friends. The master suite serves as a tranquil retreat, boasting a generously sized bedroom and a luxurious ensuite bathroom complete with a double vanity, a soaking tub, a walk-in shower, and a walk-in closet. The second bedroom, equally well-appointed, is perfect for guests or as a home office, with easy access to a full bathroom. With its thoughtful design, quality craftsmanship, and blend of modern and farmhouse aesthetics, this 2-bedroom, 2-bathroom home offers the perfect combination of comfort, style, and functionality for modern living. Welcome home!