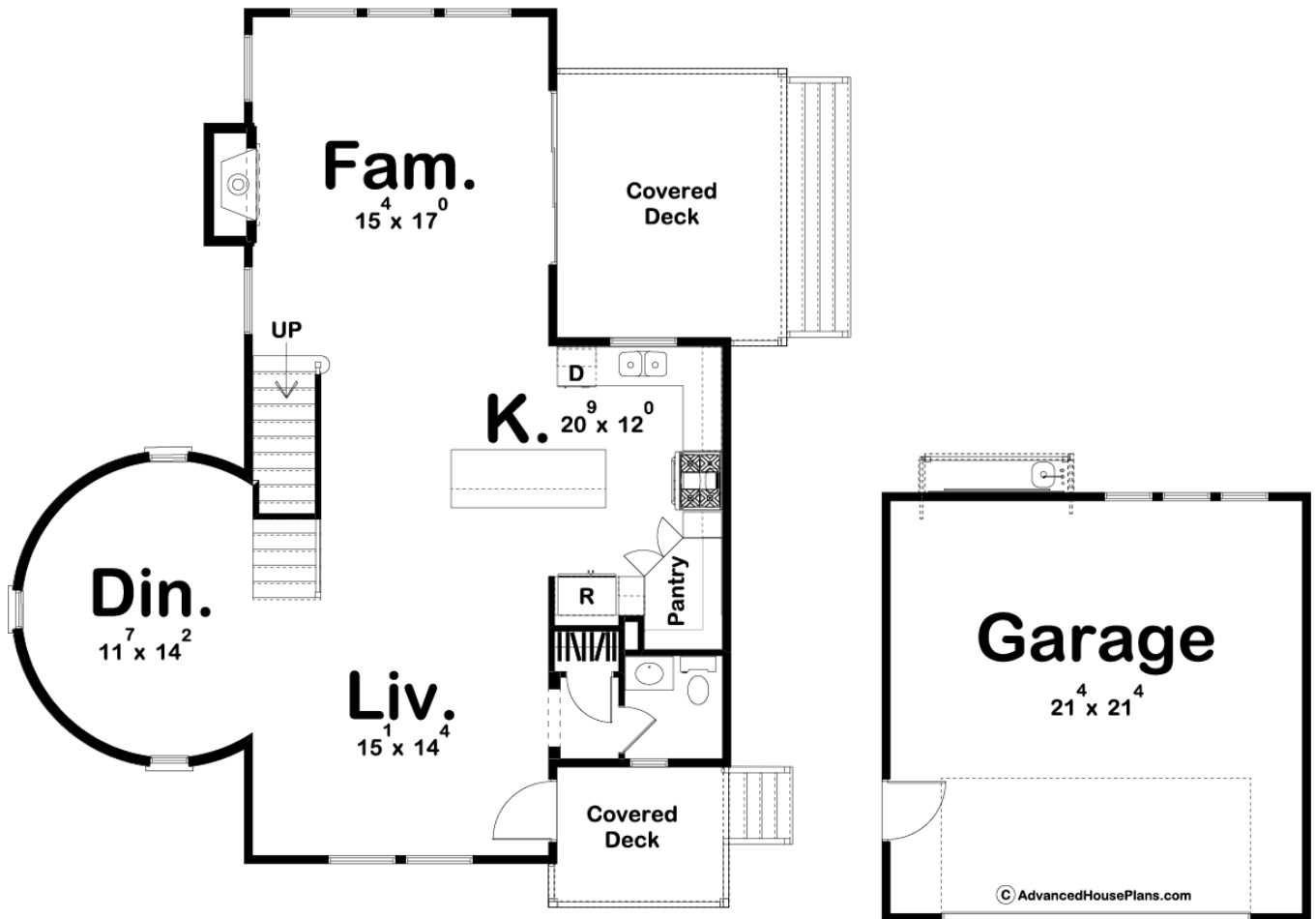
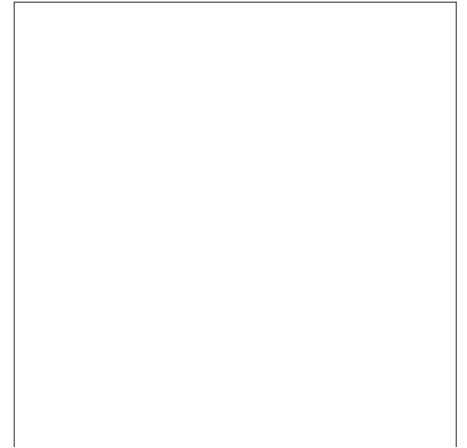
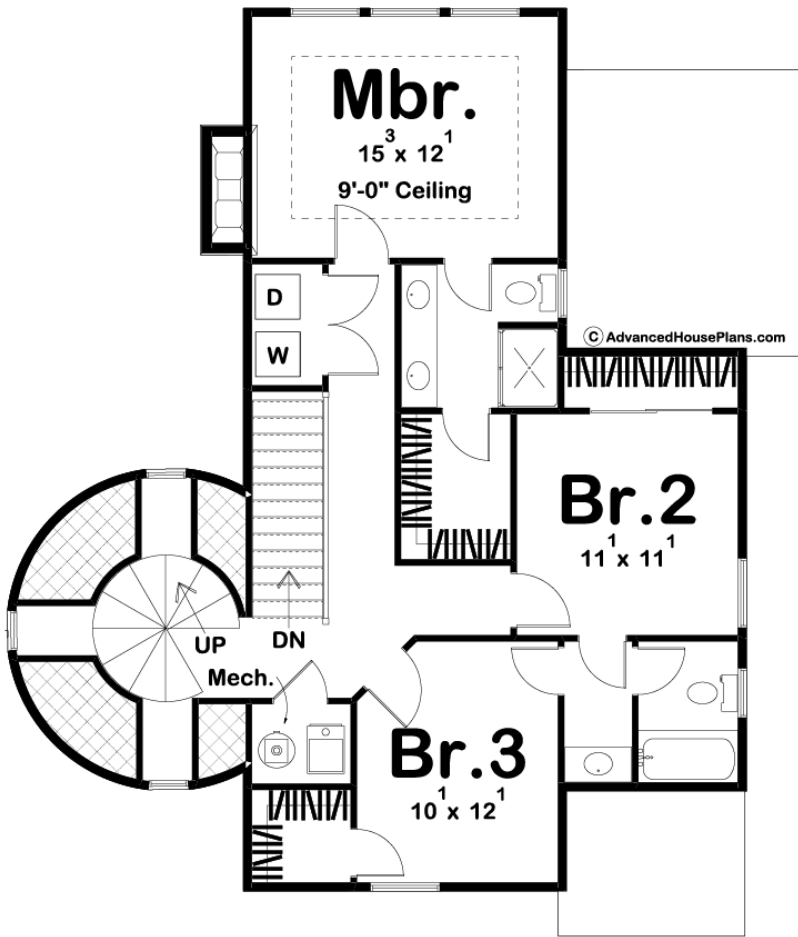




29765 - Harbor View Data Sheet

1924 SQ FT	3 BEDS	3 BATHS	2 BAYS	67' 0" WIDE	47' 0" DEEP
---------------	-----------	------------	-----------	----------------	----------------





## Construction Specs

### Layout

Bedrooms	3
Bathrooms	3
Garage Bays	2

### Square Footage

Main Level	1063 Sq. Ft.
Second Level	861 Sq. Ft.
Garage	484 Sq. Ft.
Total Finished Area	1924 Sq. Ft.

### Exterior Dimensions

Width	67' 0"
Depth	47' 0"

### Default Construction Stats

*Stats are unique to the individual plan.*

Foundation Type	Slab
-----------------	------

Exterior Wall Construction	2x4
Roof Pitches	10/12 Primary, 4/12 6/12 Secondary
Main Wall Height	9'
Second Wall Height	8'

## Plan Description

Make the most out of your vacation home by building the Harbor View plan. You'll feel like your touring a beautiful lighthouse while you are looking out to the ocean from the lookout tower. Once you step inside this amazing coastal home, you'll find a well thought out open floor plan on the main level that includes a dining room at the base of the lookout tower. The home's kitchen includes a large kitchen island and a walk-in pantry. The family room is warmed by a fireplace and has great ocean views through 3 large windows. On the second floor, you will find 3 bedrooms. The master suite includes his/her vanities and a walk-in closet. Bedrooms 2 and 3 share a jack and jill bathroom. Just a short walk up the spiral staircase and you'll be enjoying the amazing views in the lookout tower. Back on the main level, the home includes a 2 car detached garage that has a fish cleaning station on the rear.