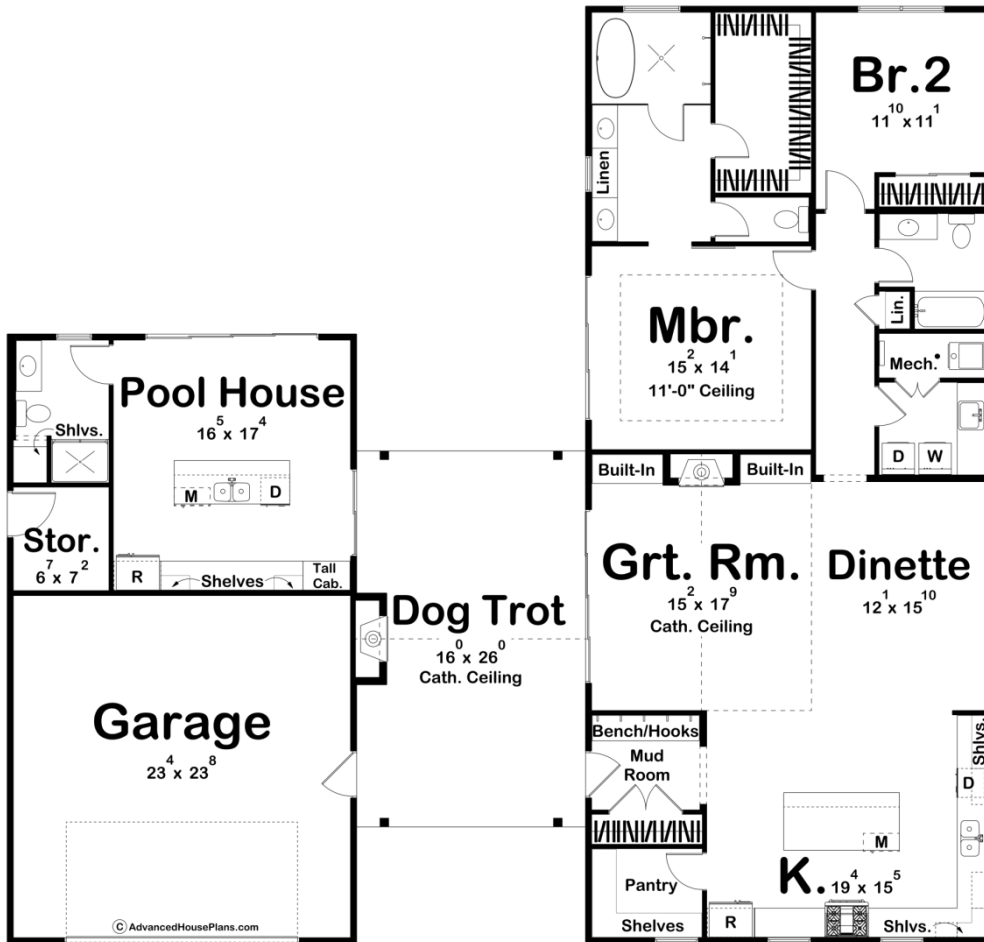




**30216 - Hampton Cottage Data Sheet**

1788 SQ FT	2 BEDS	3 BATHS	2 BAYS	68' 0" WIDE	64' 8" DEEP
---------------	-----------	------------	-----------	----------------	----------------



**Construction Specs**

Layout

Bedrooms

Bathrooms	3
Garage Bays	2
<b>Square Footage</b>	
Main Level	1788 Sq. Ft.
Covered Area	416 Sq. Ft.
Garage	576 Sq. Ft.
Total Finished Area	1788 Sq. Ft.
<b>Exterior Dimensions</b>	
Width	68' 0"
Depth	64' 8"
Ridge Height <i>Calculated from main floor line</i>	17' 10"
<b>Default Construction Stats</b> <i>Stats are unique to the individual plan.</i>	
Foundation Type	Slab
Exterior Wall Construction	2x4
Roof Pitches	Primary 6/12, Secondary 4/12
Main Wall Height	10'

## Plan Description

This cottage style home combines a beautifully unique exterior with an impressively modern interior. The exterior of the Hampton Cottage is a mix of traditional lap siding with wood accents and garage doors. Walk up to the dogtrot to be welcomed by a beautiful covered greeting area with a fireplace and choose to walk into the pool house inclusion or main living space. The main living space offers a mudroom with built-in benches, a large kitchen with a breakfast bar and walk-in pantry, and a large great room, full of windows for natural light to peer in. Continue down the hallway to find the laundry room, master bedroom, complete with a large walk-in closet and double vanity bathroom, as well as the second bedroom with a personal bathroom. Head back out to the dogtrot to find the pool house, including another bathroom, small kitchen area, as well as a storage closet for any pool essentials.