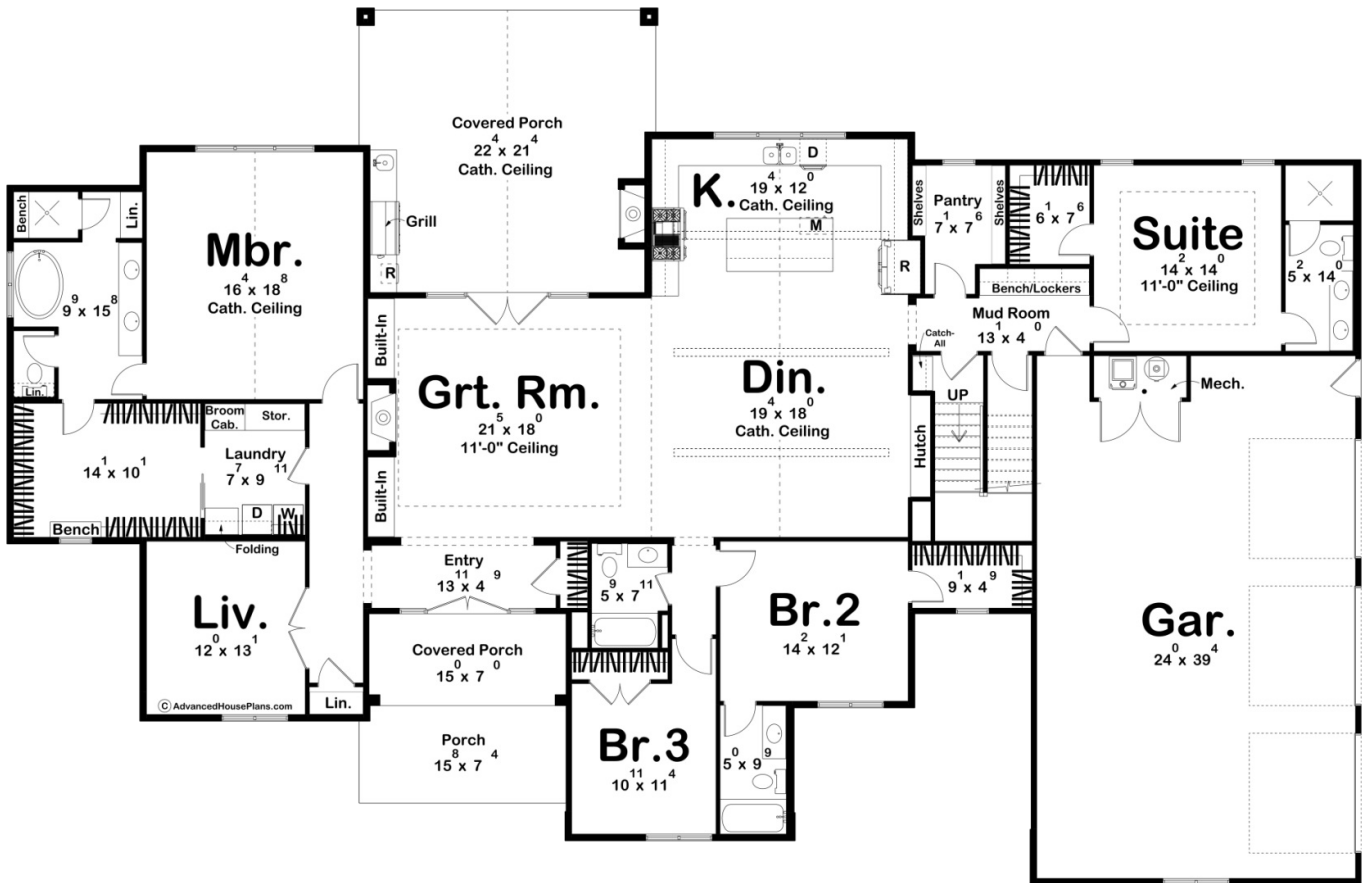
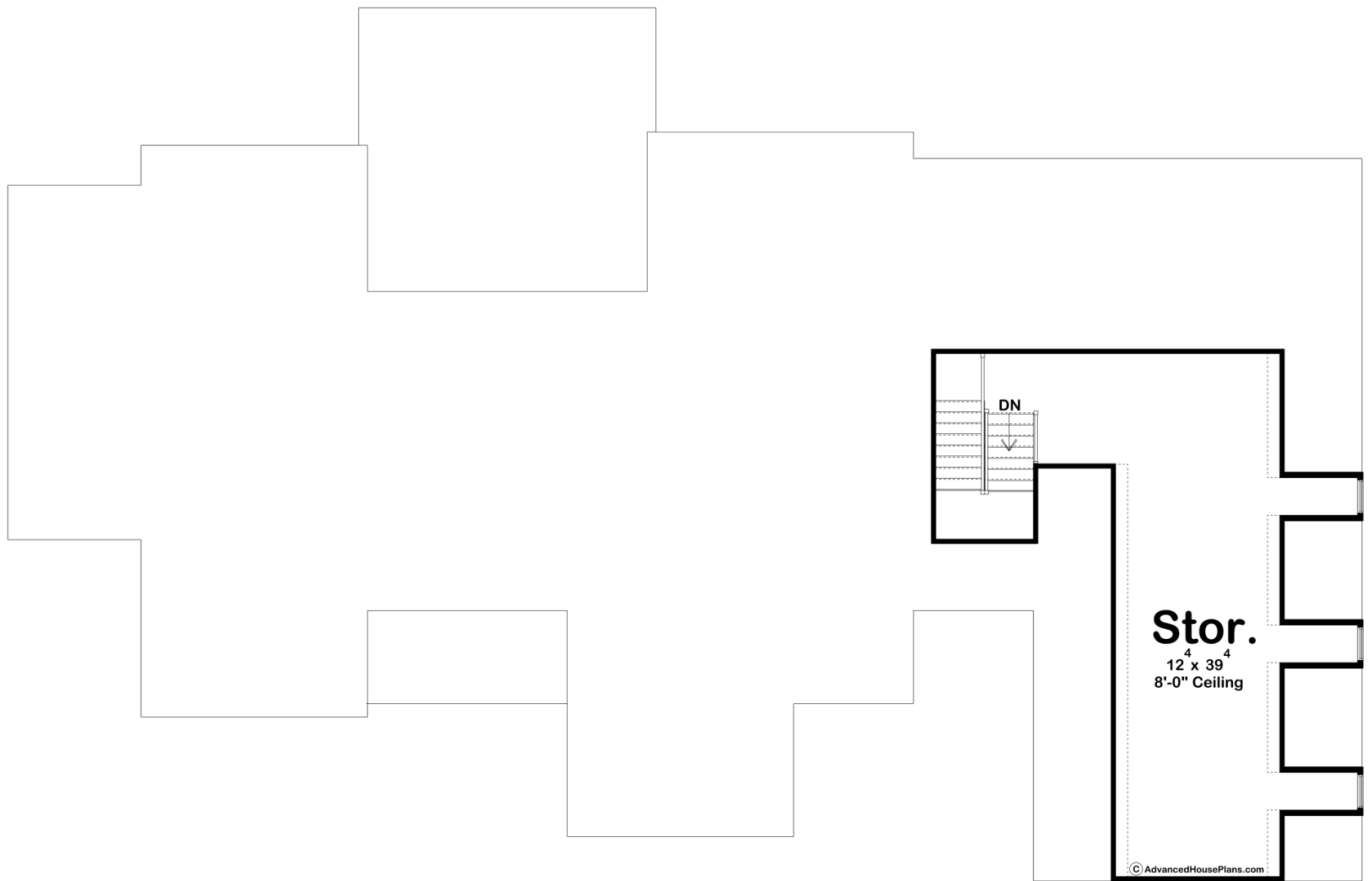




30491 - Greencastle Data Sheet

3248 SQ FT	4 BEDS	4 BATHS	3 BAYS	101' 8" WIDE	65' 8" DEEP
---------------	-----------	------------	-----------	-----------------	----------------





Construction Specs

Layout

Bedrooms	4
Bathrooms	4
Garage Bays	3

Square Footage

Main Level	3248 Sq. Ft.
Covered Area	566 Sq. Ft.
Garage	946 Sq. Ft.
Total Finished Area	3248 Sq. Ft.

Exterior Dimensions

Width	101' 8"
Depth	65' 8"

Default Construction Stats

Stats are unique to the individual plan.

Foundation Type	Slab
-----------------	------

Exterior Wall Construction	2x4
Roof Pitches	Primary 10/12, Secondary 14/12, 7/12
Main Wall Height	10'
Second Wall Height	8'

Plan Description

This stunning, one-story modern cottage home exudes charm and sophistication with its dark exterior, high roof pitches, and a blend of thinset stone and board and batten siding. The inviting front covered porch welcomes you into an open floor plan designed for comfortable living and entertaining. Upon entering, you are greeted by the expansive great room which is perfect for family gatherings and relaxation. Adjacent to the great room is the dining area which seamlessly integrates with the large, U-shaped kitchen, both of which boast soaring cathedral ceilings. Additionally, there is a separate living room offering extra space for more intimate or private settings. The house features a luxurious guest suite complete with its own bathroom and a spacious walk-in closet, providing a private retreat for visitors. Step outside to the rear covered porch, where you will find a built-in outdoor kitchen, ideal for al fresco dining and entertaining. For those in need of extra space, the upstairs leads to an unfinished bonus area, offering endless possibilities for future customization and expansion. This additional space offers 651 sq ft. This modern cottage home blends style and functionality, creating a perfect home for both everyday living and special occasions.