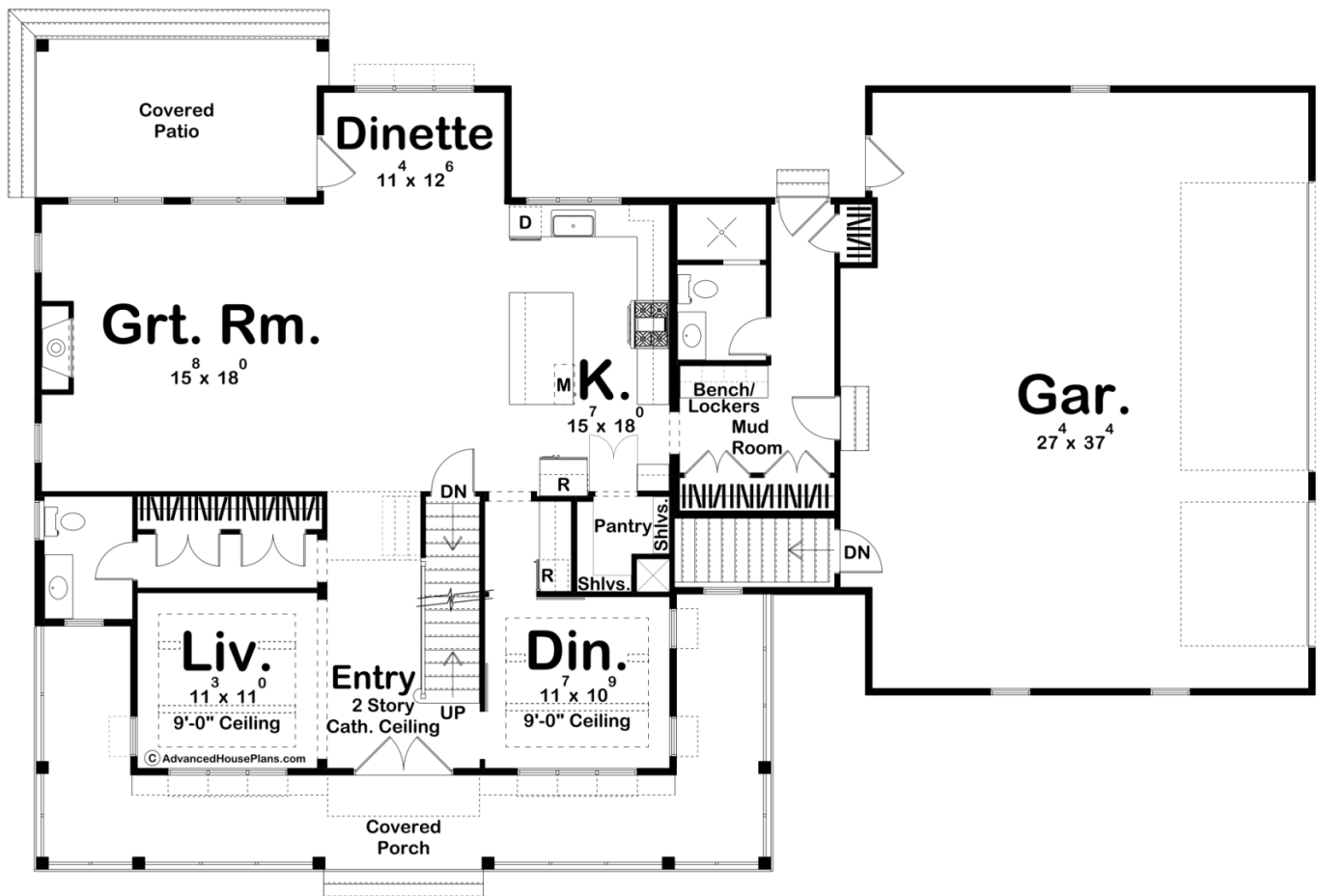
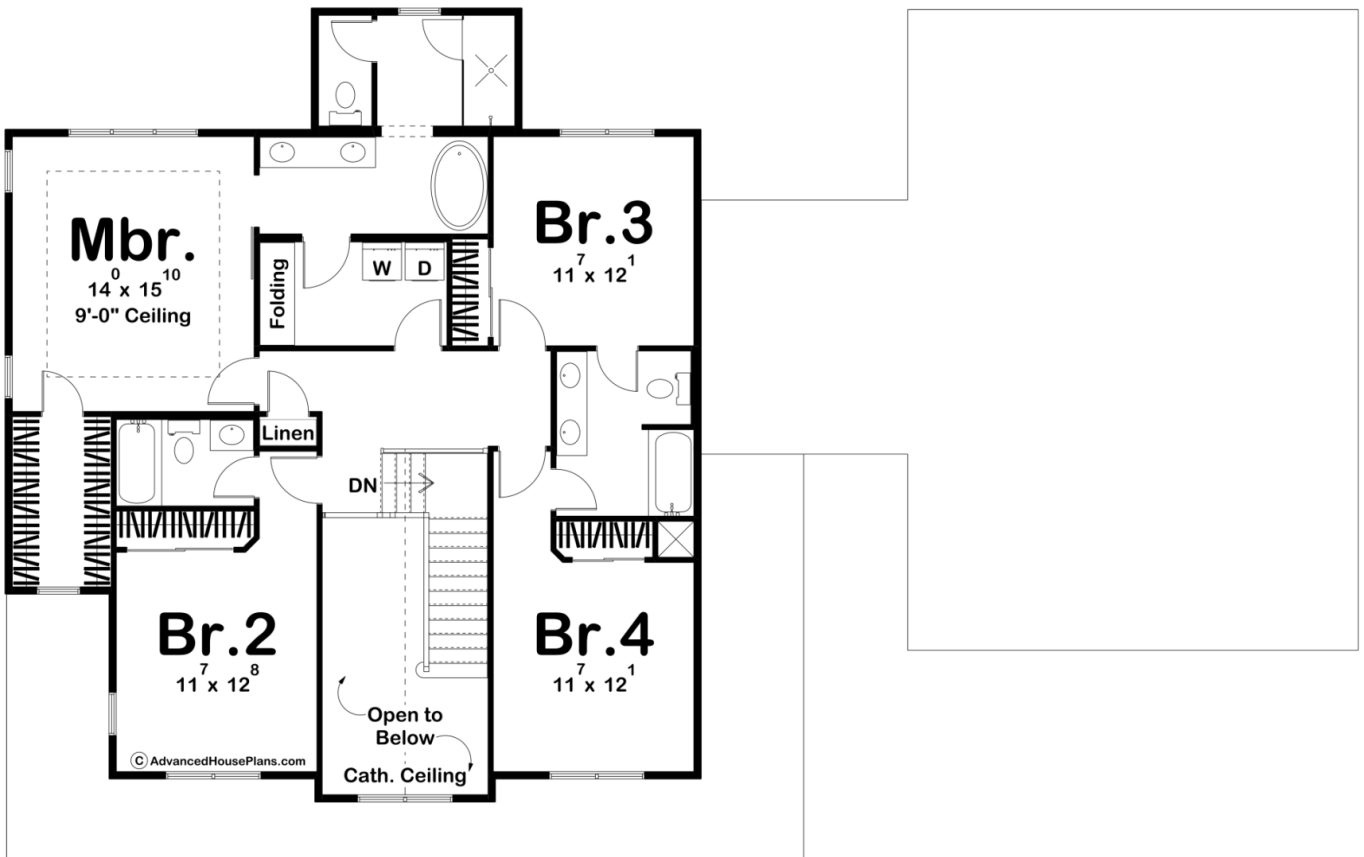




**30101 - Greenbrier Hill Data Sheet**

3071 SQ FT	4 BEDS	5 BATHS	3 BAYS	80' 0" WIDE	52' 0" DEEP
---------------	-----------	------------	-----------	----------------	----------------





## Construction Specs

### Layout

Bedrooms	4
Bathrooms	5
Garage Bays	3

### Square Footage

Main Level	1726 Sq. Ft.
Second Level	1345 Sq. Ft.
Covered Area	546 Sq. Ft.
Garage	1091 Sq. Ft.
Total Finished Area	3071 Sq. Ft.

### Exterior Dimensions

Width	80' 0"
Depth	52' 0"
Ridge Height	32'
<i>Calculated from main floor line</i>	

## Default Construction Stats

*Stats are unique to the individual plan.*

Foundation Type	Basement
Exterior Wall Construction	2x4
Roof Pitches	8/12 Primary, 10/12 4/12 Secondary
Foundation Wall Height	9'
Main Wall Height	9'
Second Wall Height	8'

## Plan Description

If you are looking for curb appeal, look no further than the Greenbrier Hill plan. The exterior screams modern farmhouse with its wrap-around porch and attached side load garage. Inside, the entryway is flanked by both the dining room and living room and has a 2 story ceiling. Further, into the home, an open kitchen and great room provide a great space for entertaining guests. The kitchen includes a farm sink, an island with a flush snack bar, and a walk-in pantry. The great room is warmed by a beautiful fireplace. A wonderful dinette leads to a covered patio that is perfect for outdoor entertainment. On the upper level of this 2 story house, you will find 4 amazing bedrooms. The master suite includes a beautiful master bathroom complete with a walk-in shower, his/her vanities, and a whirlpool tub. Bedroom 2 has its own bathroom while bedrooms 3 and 4 share a convenient jack and jill bath. Back on the main level, the amazing side load 3-car garage includes ample space and has a door that leads to the back yard. It accesses the home through a mudroom, complete with bench, lockers and a coat closet.