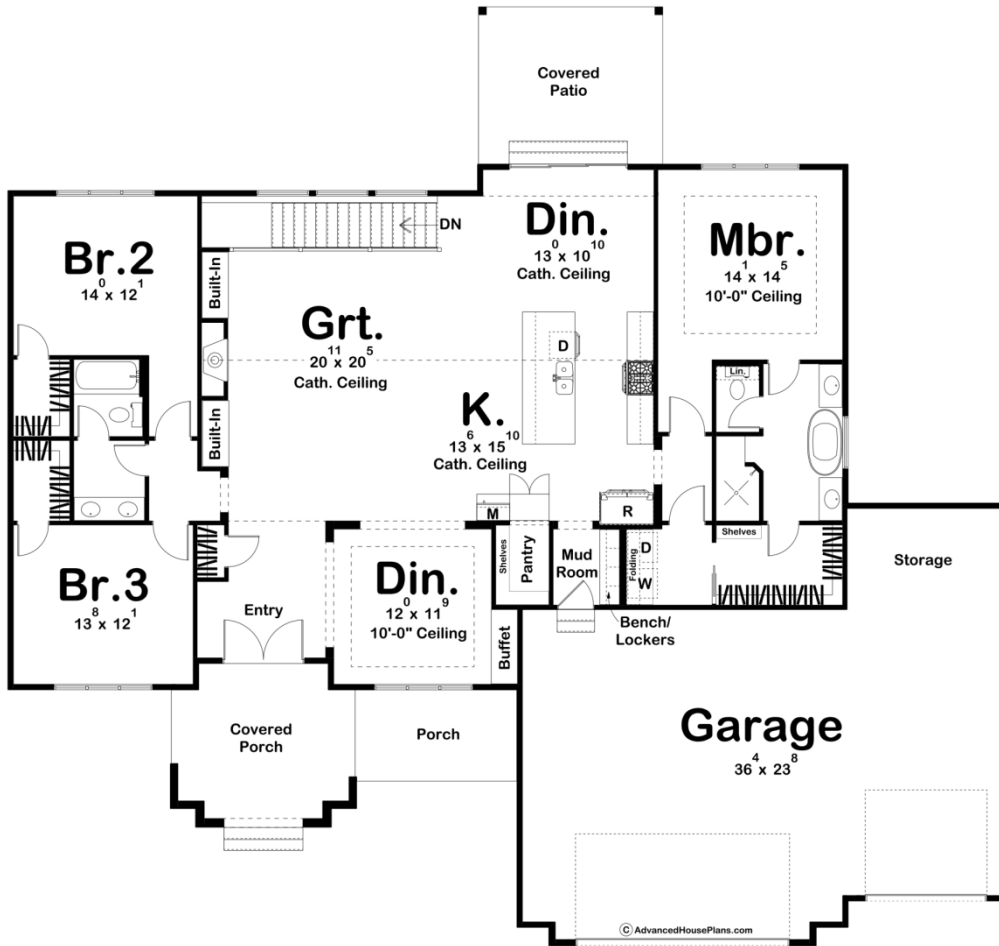




**30252 - Green River Data Sheet**

2286 SQ FT	3 BEDS	2 BATHS	3 BAYS	75' 8" WIDE	71' 0" DEEP
---------------	-----------	------------	-----------	----------------	----------------



**Construction Specs**

Layout

Bedrooms

Bathrooms	2
Garage Bays	3

### Square Footage

Main Level	2286 Sq. Ft.
Covered Area	414 Sq. Ft.
Garage	985 Sq. Ft.
Total Finished Area	2286 Sq. Ft.

### Exterior Dimensions

Width	75' 8"
Depth	71' 0"
Ridge Height <i>Calculated from main floor line</i>	22' 4"

### Default Construction Stats

*Stats are unique to the individual plan.*

Foundation Type	Basement
Exterior Wall Construction	2x4
Roof Pitches	Primary 8/12, Secondary 10/12, 4/12
Main Wall Height	9'

## Plan Description

The Green River plan is a simple Modern Farmhouse with board & batten siding and a pop of thinset brick. Entering from the garage, there is a mudroom with bench & lockers. Stepping in further, you will find the large kitchen with an oversized island. This plan includes a formal dining space and a dinette. The great room has a cathedral ceiling and a built in fireplace with cabinets beside it. There are three bedrooms on the main floor. Two of them share a hall bath. The master bedroom has it's own bath that connects the walk-in closet to the laundry room. The optional finished basement provides an extra 1549 square feet of finished space and 559 square feet of storage. The basement opens up into a large family room with a fireplace. There is an exercise room along with a wet bar. The finished basement also provides two additional bedrooms and a bath. This plan could easily be turned into a slab or crawlspace foundation by removing the stairs and having a larger great room.