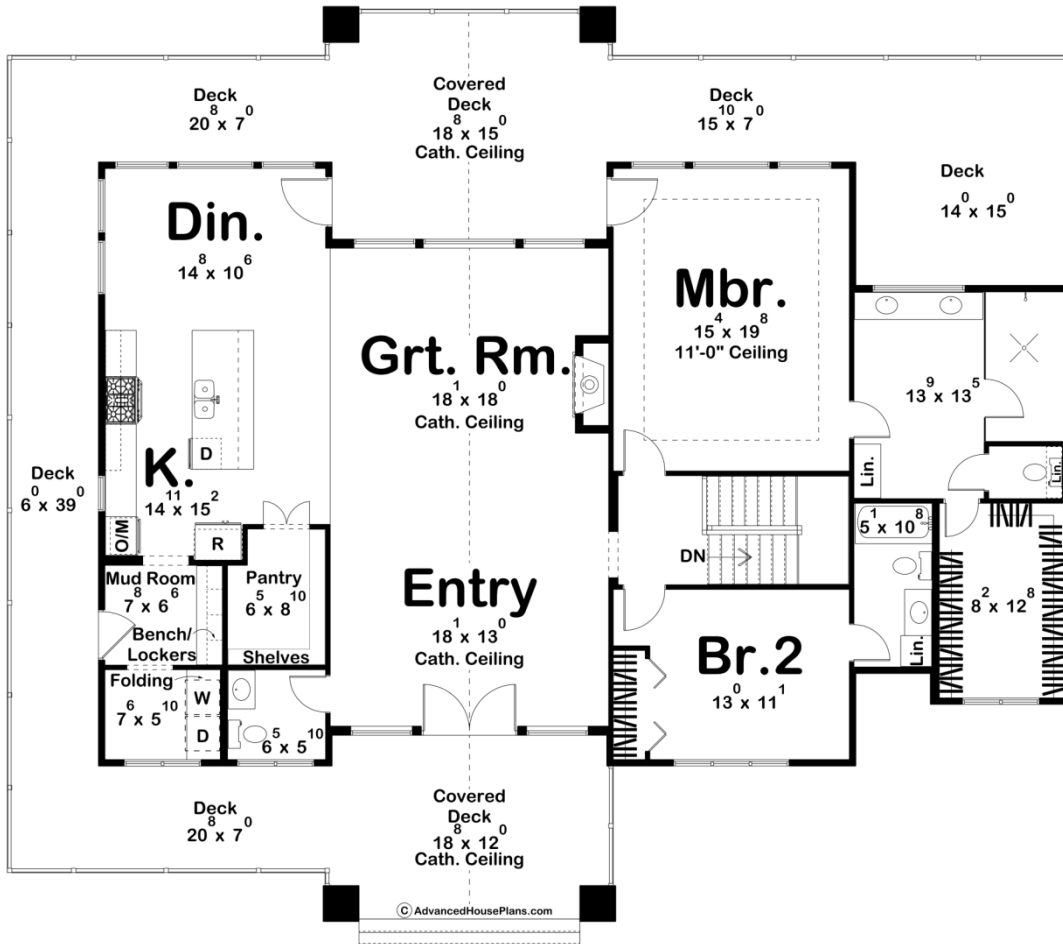
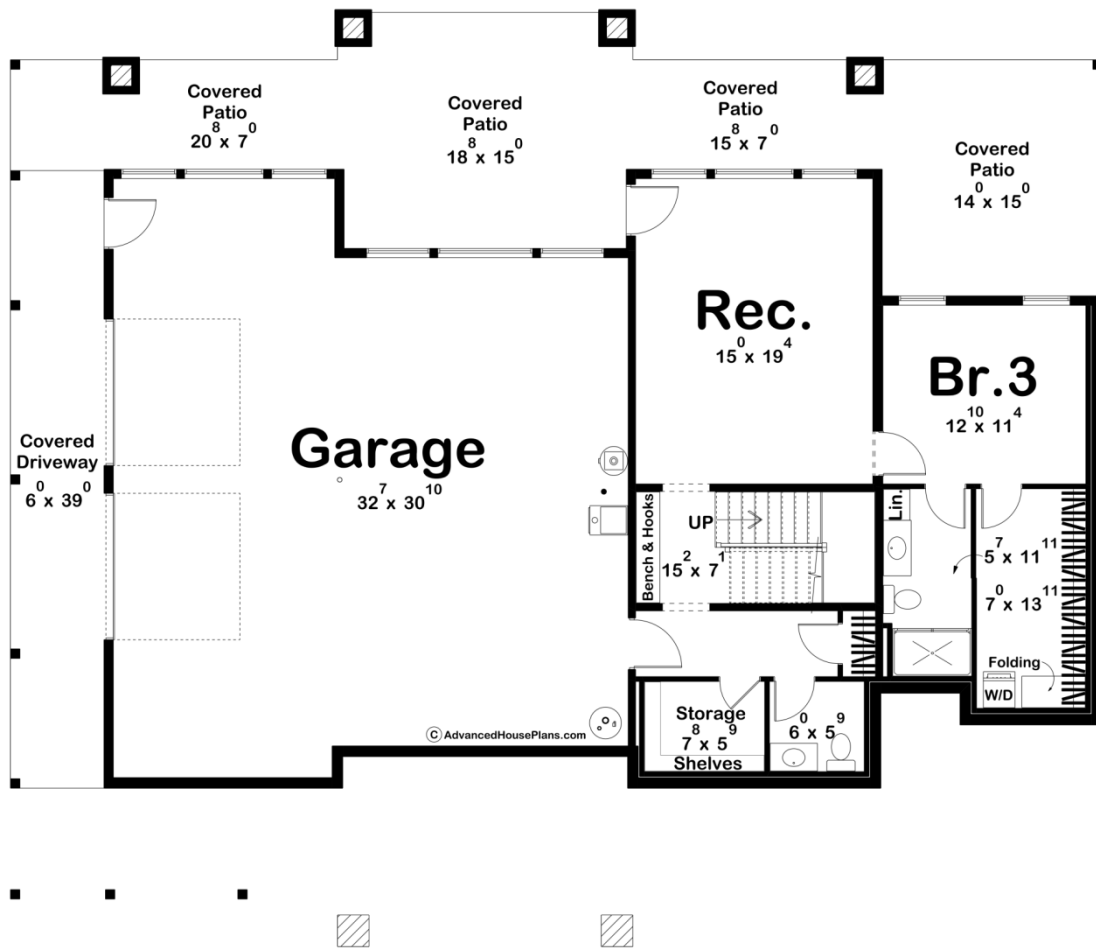




**30342 - Granite Lake Data Sheet**

2148 SQ FT	2 BEDS	3 BATHS	2 BAYS	69' 0" WIDE	59' 0" DEEP
---------------	-----------	------------	-----------	----------------	----------------





## Construction Specs

### Layout

Bedrooms	2
Bathrooms	3
Garage Bays	2

### Square Footage

Main Level	2148 Sq. Ft.
Covered Area	499 Sq. Ft.
Garage	1139 Sq. Ft.
Total Finished Area	2148 Sq. Ft.

### Exterior Dimensions

Width	69' 0"
Depth	59' 0"
Ridge Height	23' 10"
<i>Calculated from main floor line</i>	

## Default Construction Stats

*Stats are unique to the individual plan.*

Foundation Type	Walkout
Exterior Wall Construction	2x4
Roof Pitches	Primary 8/12, Secondary 10/12, 6/12
Foundation Wall Height	10'
Main Wall Height	10'

## Plan Description

Introducing the Granite Lake plan, where tranquility meets elegance in a harmonious blend of rustic charm and contemporary comfort. Nestled amidst the serene beauty of the lakeside, this picturesque retreat offers the perfect escape from the hustle and bustle of everyday life. As you approach the home, you're greeted by the inviting presence of a large wrap-around deck, providing ample space for outdoor relaxation and breathtaking views of the surrounding landscape. Whether you're sipping your morning coffee as the sun rises over the water or enjoying a leisurely evening barbecue with friends and family, this expansive deck is sure to be a favorite gathering spot. Stepping inside, you're immediately struck by the grandeur of the cathedral ceiling, creating a sense of openness and warmth throughout the living space. Natural light floods the interior, highlighting the impeccable craftsmanship and attention to detail found in every corner of the home. The heart of the house is the spacious living area, where cozy evenings by the fireplace seamlessly transition into lively gatherings with loved ones. The open-concept design flows effortlessly into the gourmet kitchen, featuring high-end appliances, custom cabinetry, and a large center island perfect for both meal preparation and casual dining. The master suite offers a serene sanctuary, complete with a luxurious en-suite bathroom and private access to the deck, allowing you to wake up to stunning views of the lake each morning. A second bedroom and two additional bathrooms ensure ample space for guests, while a flexible floor plan offers the option for a walkout basement, ideal for a home office, recreation room, or additional living quarters. Whether you're seeking a quiet weekend retreat or a year-round residence, this house offers the perfect blend of luxury and tranquility, creating a timeless oasis where memories are made and cherished for years to come.