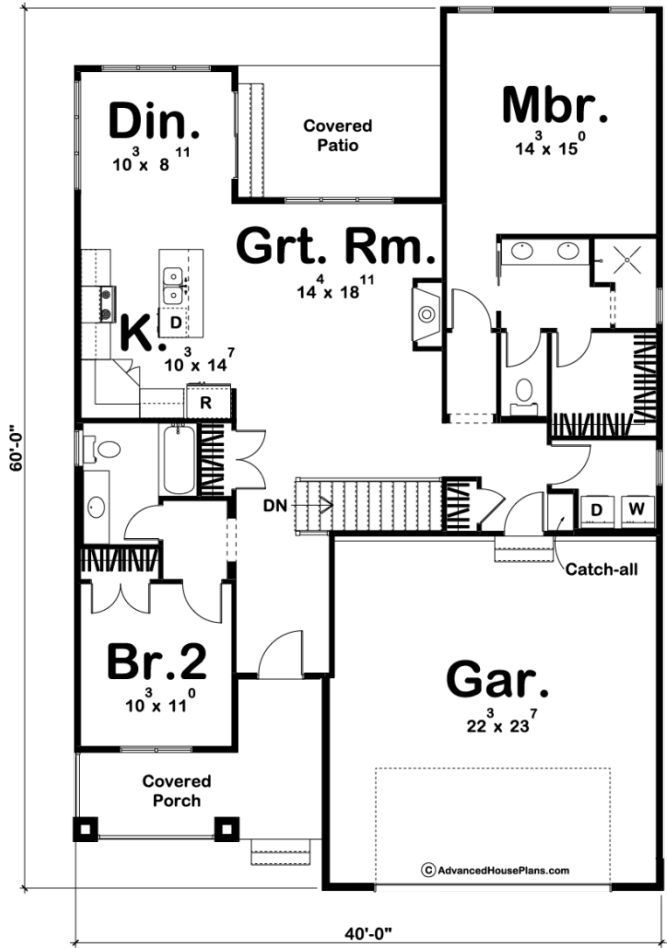




©WWW.ADVANCEDHOUSEPLANS.COM

29412 - Goodman Data Sheet

1440 SQ FT	2 BEDS	2 BATHS	2 BAYS	40' 0" WIDE	60' 0" DEEP
---------------	-----------	------------	-----------	----------------	----------------



Construction Specs

Layout

Bedrooms

Bathrooms	2
-----------	---

Garage Bays	2
-------------	---

Square Footage

Main Level	1440 Sq. Ft.
------------	--------------

Garage	546 Sq. Ft.
--------	-------------

Total Finished Area	1440 Sq. Ft.
---------------------	--------------

Exterior Dimensions

Width	40' 0"
-------	--------

Depth	60' 0"
-------	--------

Ridge Height	28'
--------------	-----

Calculated from main floor line

Default Construction Stats

Stats are unique to the individual plan.

Foundation Type	Basement
-----------------	----------

Exterior Wall Construction	2x4
----------------------------	-----

Roof Pitches	10/12 Primary 8/12, 4/12 Secondary
--------------	------------------------------------

Foundation Wall Height	9'
------------------------	----

Main Wall Height	9'
------------------	----

Plan Description

The Goodman house plan is a Cottage style ranch with a functional floor plan and charming exterior. Wood columns, thin set stone, and metal roofs help compliment this 1 story house plans facade. Once you entered through the oversized front porch you will be greeted with a larger entry with views to the rear covered porch through the great room. Adjacent to the great room lies the kitchen with a large work island and a walk-in corner pantry. On the other side of this 1 story house plan is the master bedroom which offers an attached 3/4 bath with dual vanities, roman shower, and walk-in closet. Check out our other small house plans!As always any Advanced House Plans home plan can be customized to fit your needs with our alteration department. Whether you need to add another garage stall, change the front elevation, stretch the home larger or just make the home plan more affordable for your budget we can do that and more for you at Ahp.