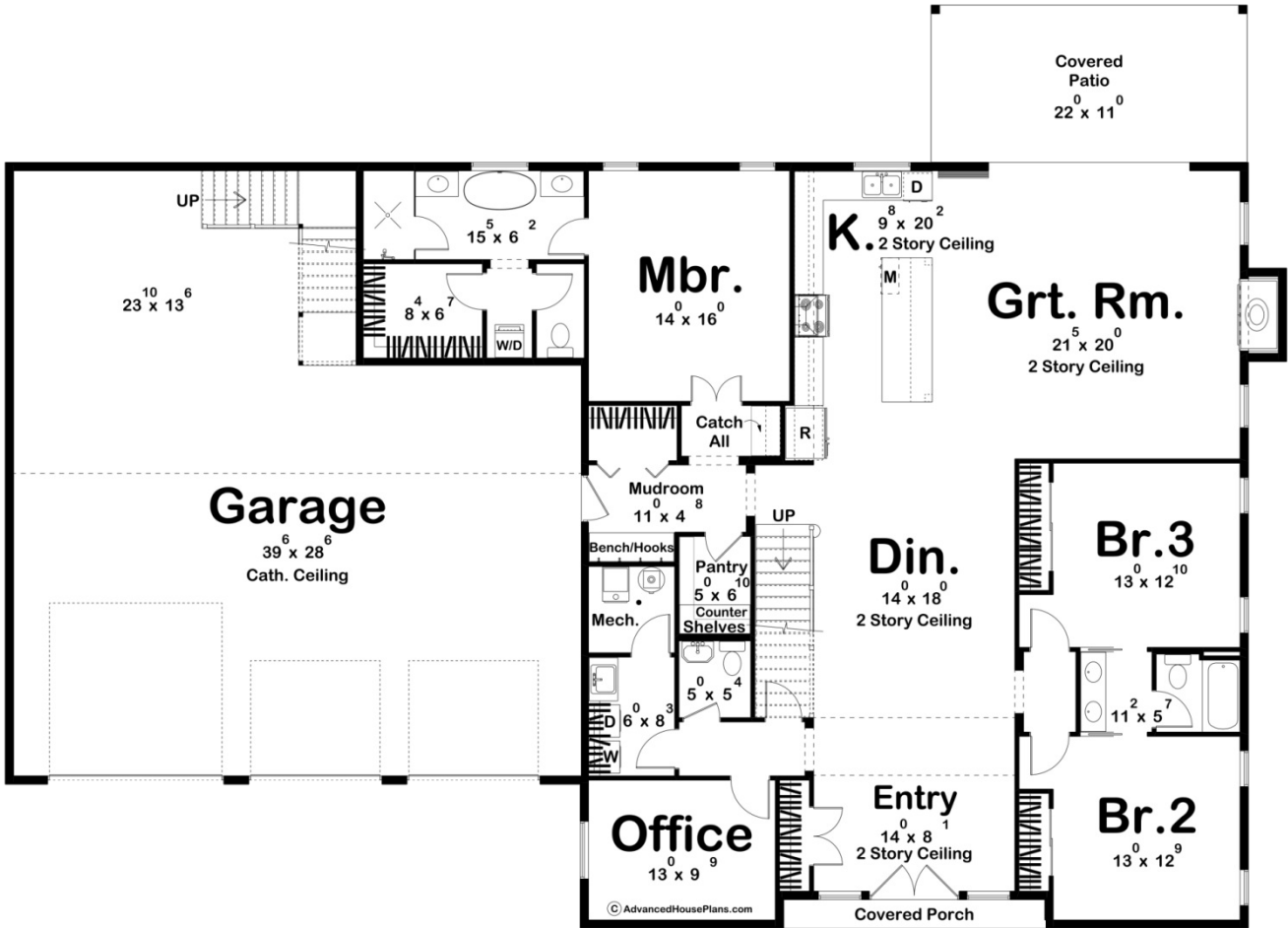




30656 - Gillette Data Sheet

| | | | | | |
|---------------|-----------|------------|-----------|----------------|----------------|
| 3991 SQ FT | 6 BEDS | 5 BATHS | 3 BAYS | 89' 0" WIDE | 64' 0" DEEP |
|---------------|-----------|------------|-----------|----------------|----------------|





Construction Specs

Layout

| | |
|-------------|---|
| Bedrooms | 6 |
| Bathrooms | 5 |
| Garage Bays | 3 |

Square Footage

| | |
|---------------------|--------------|
| Main Level | 2602 Sq. Ft. |
| Second Level | 1389 Sq. Ft. |
| Covered Area | 279 Sq. Ft. |
| Garage | 1501 Sq. Ft. |
| Total Finished Area | 3991 Sq. Ft. |

Exterior Dimensions

| | |
|-------|--------|
| Width | 89' 0" |
| Depth | 64' 0" |

Default Construction Stats

Stats are unique to the individual plan.

| | |
|----------------------------|-------------------------------|
| Foundation Type | Slab |
| Exterior Wall Construction | 2x6 |
| Roof Pitches | Primary 10/12, Secondary Flat |
| Main Wall Height | 9' |
| Second Wall Height | 8' |

Plan Description

Step into the perfect fusion of rustic charm and modern luxury with this stunning 6-bedroom, 5-bathroom barndominium. From the moment you arrive, the large barn doors on the front of the home make a bold statement, showcasing the unique blend of industrial design and farmhouse style. The expansive exterior promises a blend of functionality and beauty, perfect for those who crave a touch of rural elegance without sacrificing modern conveniences. Inside, you'll find a large open-concept main living area that feels both spacious and cozy, thanks to its high ceilings and clean, modern design. The kitchen, dining, and living areas flow seamlessly together, making this the perfect home for entertaining guests or enjoying quiet family evenings. The large windows and high ceilings create an airy ambiance that is both inviting and visually stunning, with the catwalk above adding a dramatic architectural flair that overlooks the entire main level. The six spacious bedrooms offer privacy and comfort for family and guests alike. The master suite is a sanctuary of its own, complete with a luxurious ensuite bathroom featuring double vanities, a walk-in shower, and a soaking tub. The additional five bathrooms ensure that no one has to wait for space, while the guest rooms offer comfort with plenty of room to spread out. This barndominium is more than just a home—it's a lifestyle. It combines the timeless charm of barn-style architecture with sleek, contemporary features that cater to modern living. With its spacious design, stunning features like the catwalk and barn doors, and an abundance of bedrooms and bathrooms, this property is ideal for large families or those who love to entertain. The high ceilings and open floor plan make this home a truly breathtaking place to live.