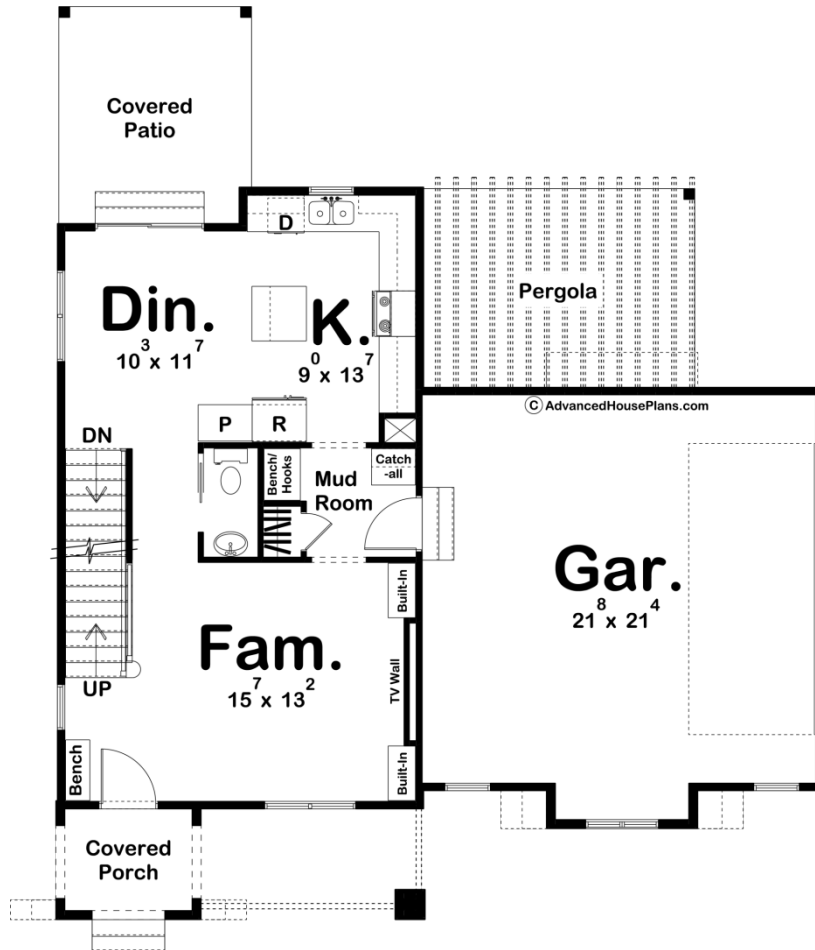
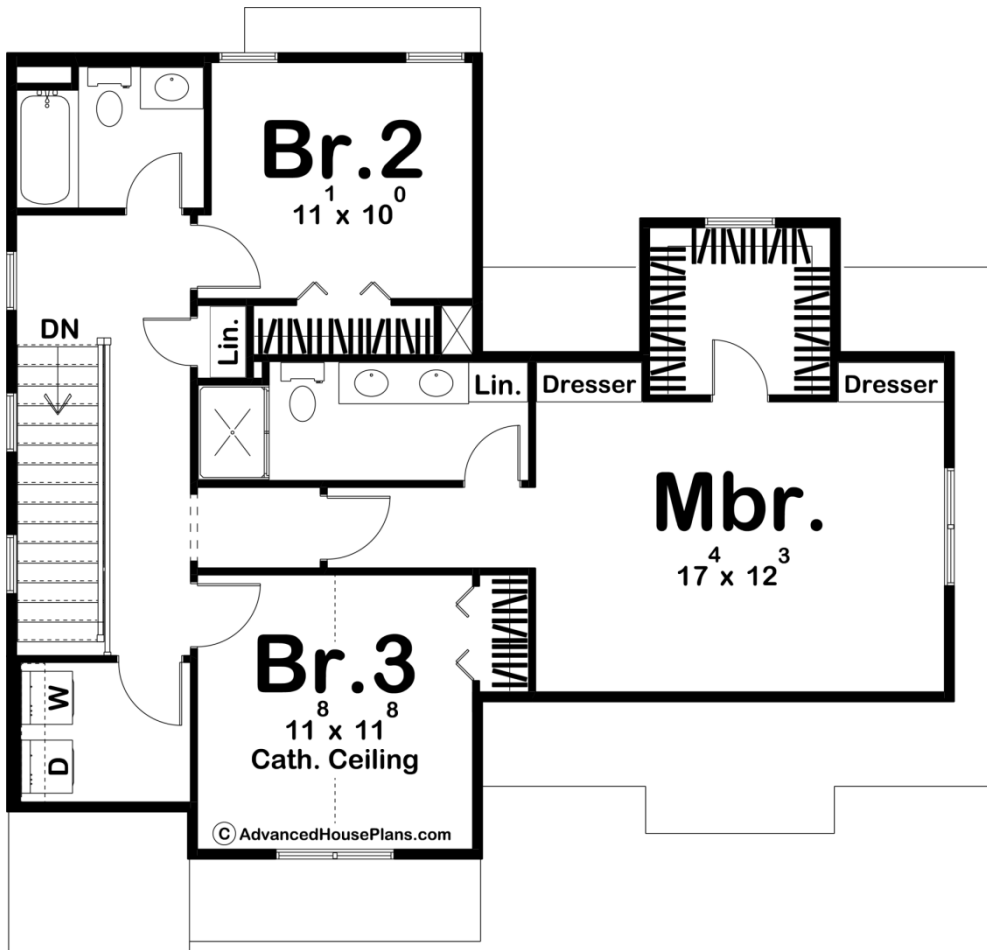




**29937 - Foxglove Data Sheet**

1614 SQ FT	3 BEDS	3 BATHS	2 BAYS	42' 0" WIDE	40' 0" DEEP
---------------	-----------	------------	-----------	----------------	----------------





## Construction Specs

### Layout

Bedrooms	3
Bathrooms	3
Garage Bays	2

### Square Footage

Main Level	659 Sq. Ft.
Second Level	955 Sq. Ft.
Garage	500 Sq. Ft.
Total Finished Area	1614 Sq. Ft.

### Exterior Dimensions

Width	42' 0"
Depth	40' 0"

### Default Construction Stats

*Stats are unique to the individual plan.*

Foundation Type	Basement
-----------------	----------

Exterior Wall Construction	2x4
Roof Pitches	6/12 Primary, 4/12 Secondary
Foundation Wall Height	9'
Main Wall Height	9'
Second Wall Height	8'

## Plan Description

The Foxglove plan is a beautiful modern cottage style house plan. The exterior features white stucco, light stone, and wood accents. Once you enter the house through the front covered porch, you'll find yourself in a large living room with built-in shelves and a tv wall. The kitchen includes an island and a reach-in pantry. Upstairs, you'll find 3 bedrooms including the master suite. The master bedroom includes a walk-in closet, dual built-in dressers, his/her vanities, and a walk-in shower. Back on the main floor, the home's 2 car side load garage accesses the home through a practical mudroom with a catch all.