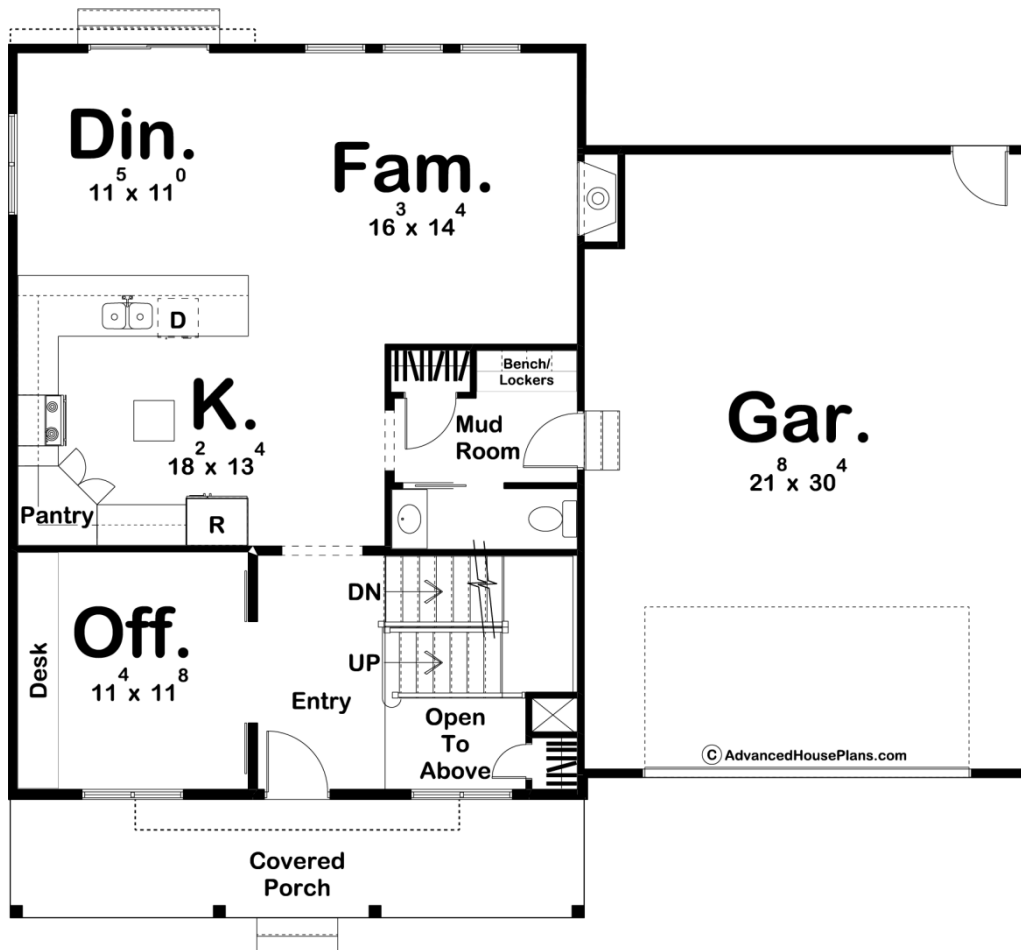


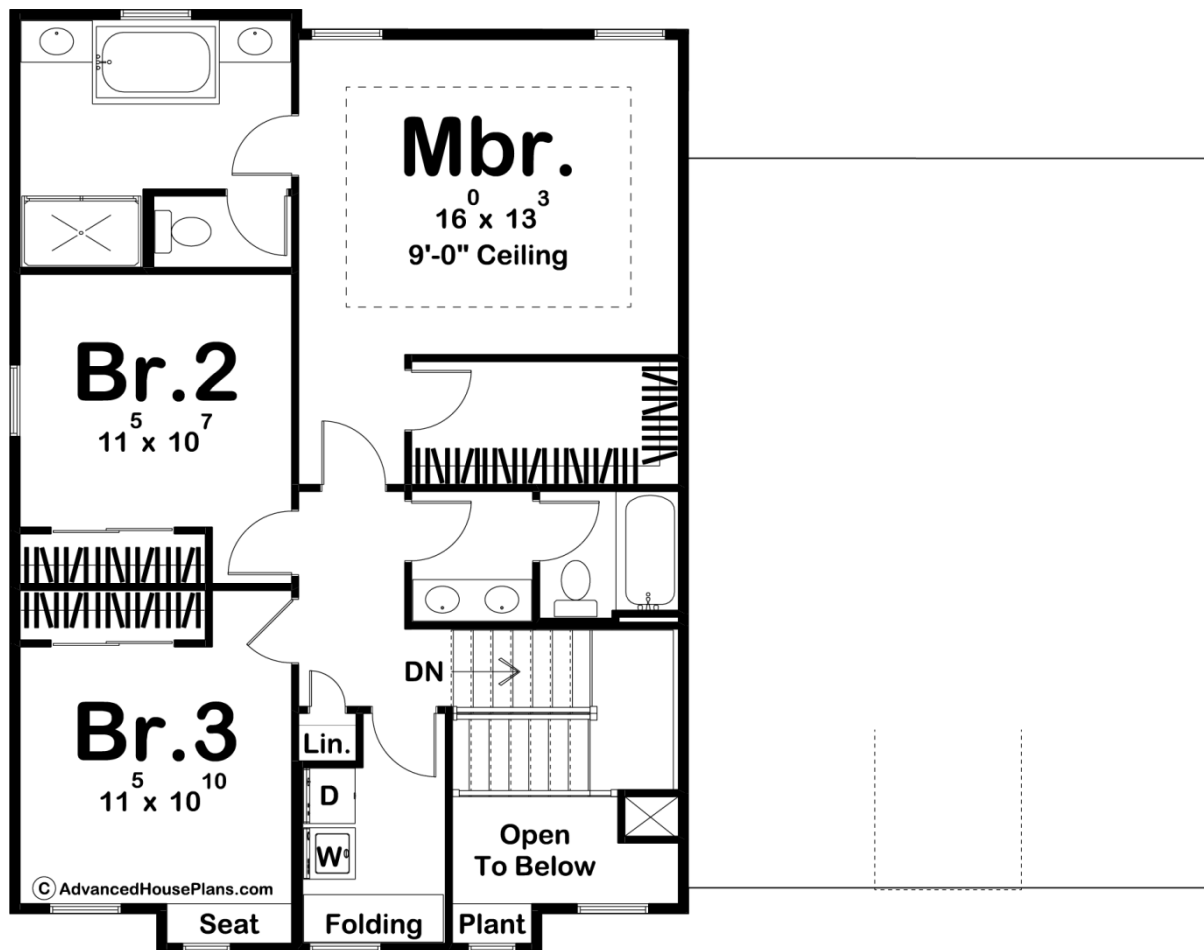
ADVANCED
HOUSE PLANS



29960 - Flynn Farm Data Sheet

2017 SQ FT	3 BEDS	3 BATHS	2 BAYS	50' 4" WIDE	43' 0" DEEP
---------------	-----------	------------	-----------	----------------	----------------





Construction Specs

Layout

Bedrooms	3
Bathrooms	3
Garage Bays	2

Square Footage

Main Level	1054 Sq. Ft.
Second Level	963 Sq. Ft.
Covered Area	170 Sq. Ft.
Garage	673 Sq. Ft.
Total Finished Area	2017 Sq. Ft.

Exterior Dimensions

Width	50' 4"
Depth	43' 0"

Default Construction Stats

Stats are unique to the individual plan.

Foundation Type	Basement
Exterior Wall Construction	2x4
Roof Pitches	6/12 Primary, 10/12 Secondary
Foundation Wall Height	9'
Main Wall Height	9'
Second Wall Height	8'

Plan Description

The Flynn Farm is a modern-farmhouse style 2 story house plan with an elegant exterior and a functional, simple floor plan. This home looks great from the street with its symmetry and style!The main floor features an office that is perfect for anyone who works from home. The home also features open living spaces in the dining, kitchen, and family rooms, and a mud room with some handy storage to keep your home free of clutter. There's a generously sized 2 car garage with extra depth to take advantage of storage or for a work area.The second floor is very efficient, with a spacious master suite. The master bath has his and her vanities, whirlpool tub, shower, and enclosed toilet. The walk-in closet is also well-sized. We've placed the laundry room upstairs too to save you from trips up and down stairs.