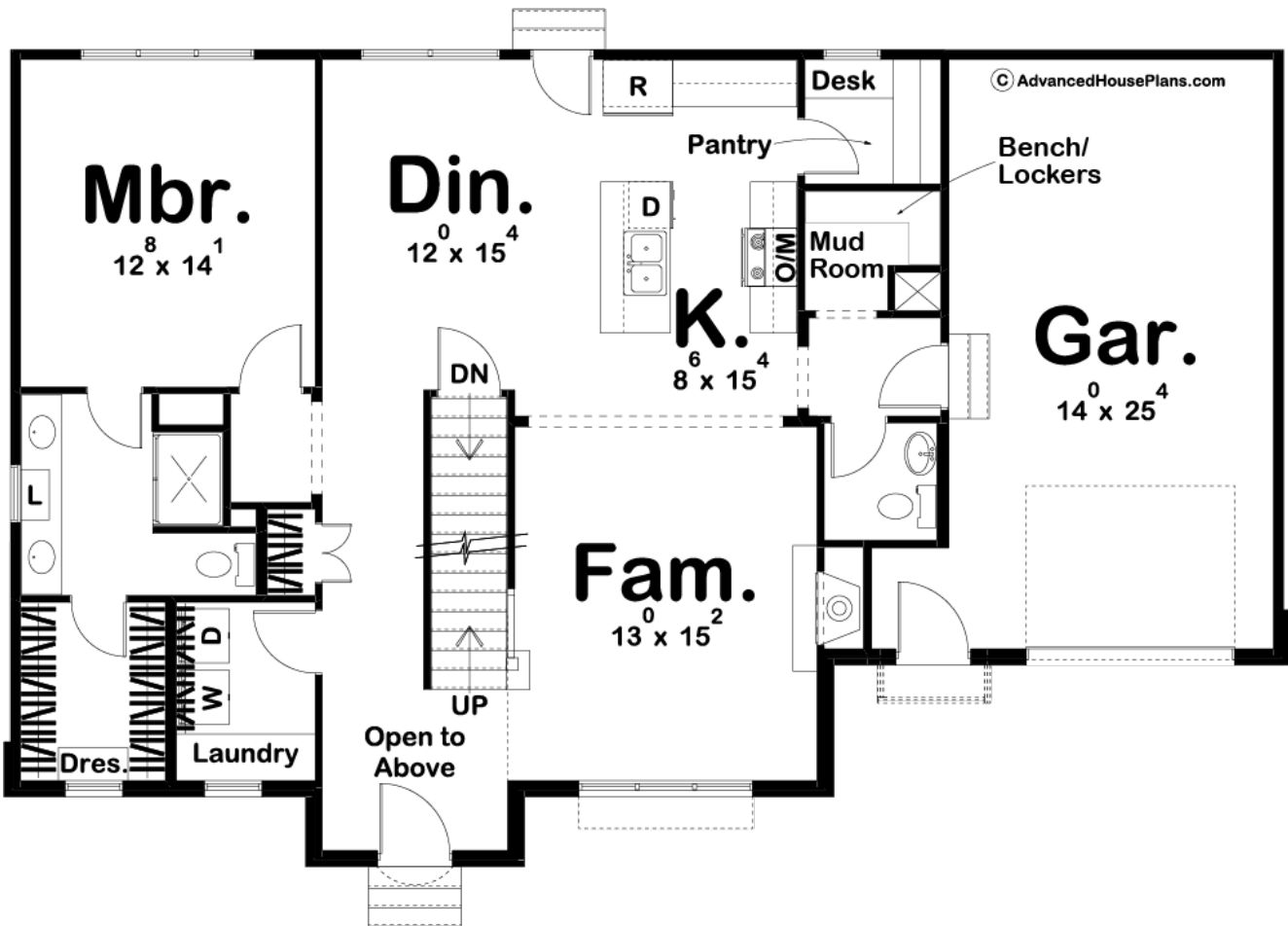
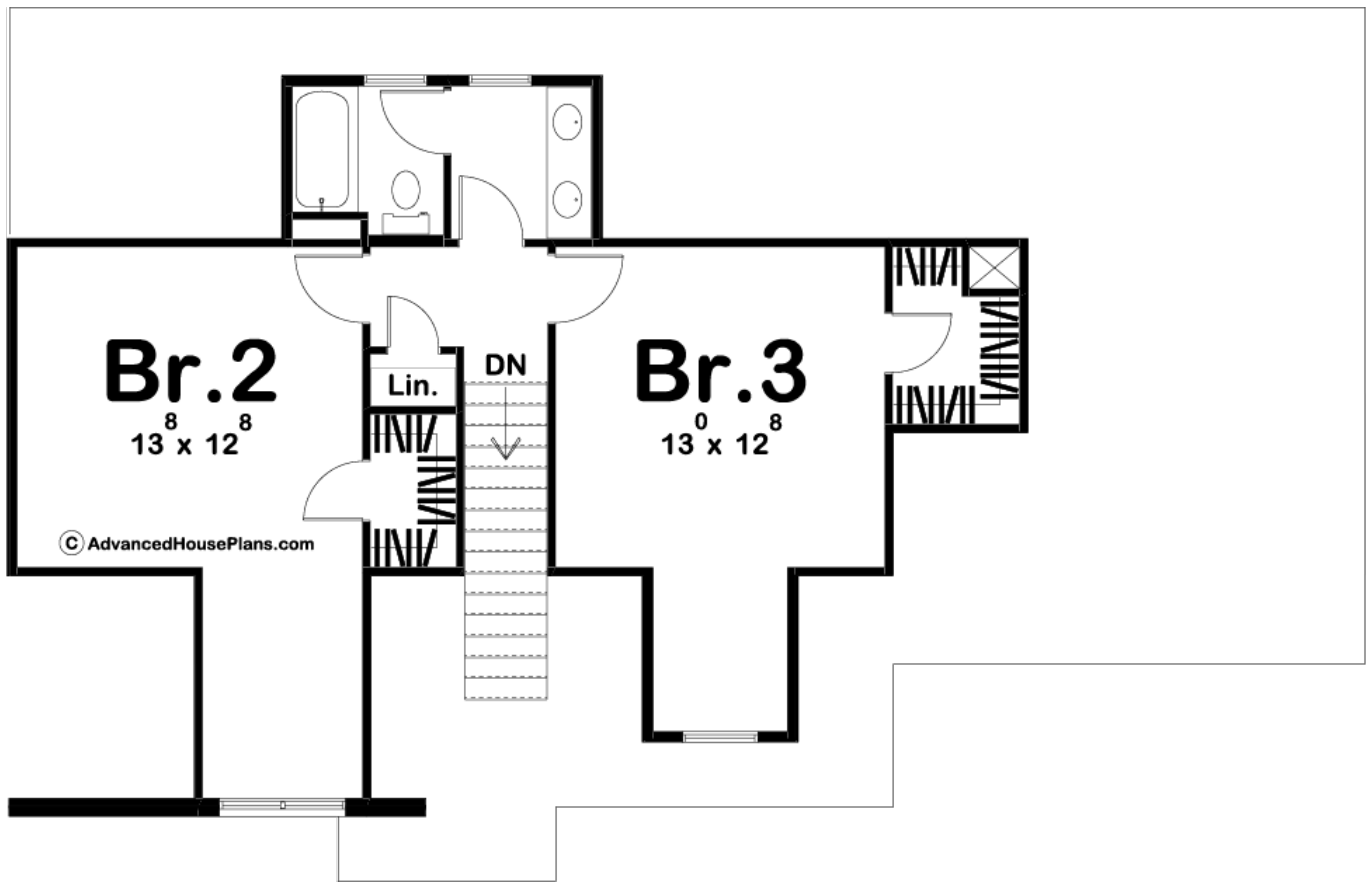




29732 - Florence Heights Data Sheet

| | | | | | |
|---------------|-----------|------------|-----------|----------------|----------------|
| 1921 SQ FT | 3 BEDS | 3 BATHS | 1 BAYS | 55' 0" WIDE | 35' 0" DEEP |
|---------------|-----------|------------|-----------|----------------|----------------|





Construction Specs

Layout

| | |
|-------------|---|
| Bedrooms | 3 |
| Bathrooms | 3 |
| Garage Bays | 1 |

Square Footage

| | |
|---------------------|--------------|
| Main Level | 1254 Sq. Ft. |
| Second Level | 667 Sq. Ft. |
| Garage | 388 Sq. Ft. |
| Total Finished Area | 1921 Sq. Ft. |

Exterior Dimensions

| | |
|-------|--------|
| Width | 55' 0" |
| Depth | 35' 0" |

Default Construction Stats

Stats are unique to the individual plan.

| | |
|-----------------|----------|
| Foundation Type | Basement |
|-----------------|----------|

| | |
|----------------------------|-------------------------------------|
| Exterior Wall Construction | 2x4 |
| Roof Pitches | 12/12 Primary, 4/12 16/12 Secondary |
| Foundation Wall Height | 9' |
| Main Wall Height | 9' |
| Second Wall Height | 8' |

Plan Description

The Florence Heights plan gives off a cozy and inviting cottage look and mixes in plenty of modern amenities. This house has wonderful curb appeal. Inside the home, the floorplan feels larger than it is with its open concept. The family room, dinette, and kitchen flow seamlessly together. The family room is warmed by a fireplace with a hearth. The kitchen includes a large island with a flush snack bar. The Master suite is conveniently located on the main floor and includes his/her vanities, a walk-in shower and a large walk-in closet with a built-in dresser. Upstairs, you will find 2 bedrooms, bedrooms 2 and 3 share a conveniently located hall bathroom and each has its own walk-in closet. Back on the main floor, the 1 car garage accesses the home through a convenient mudroom.