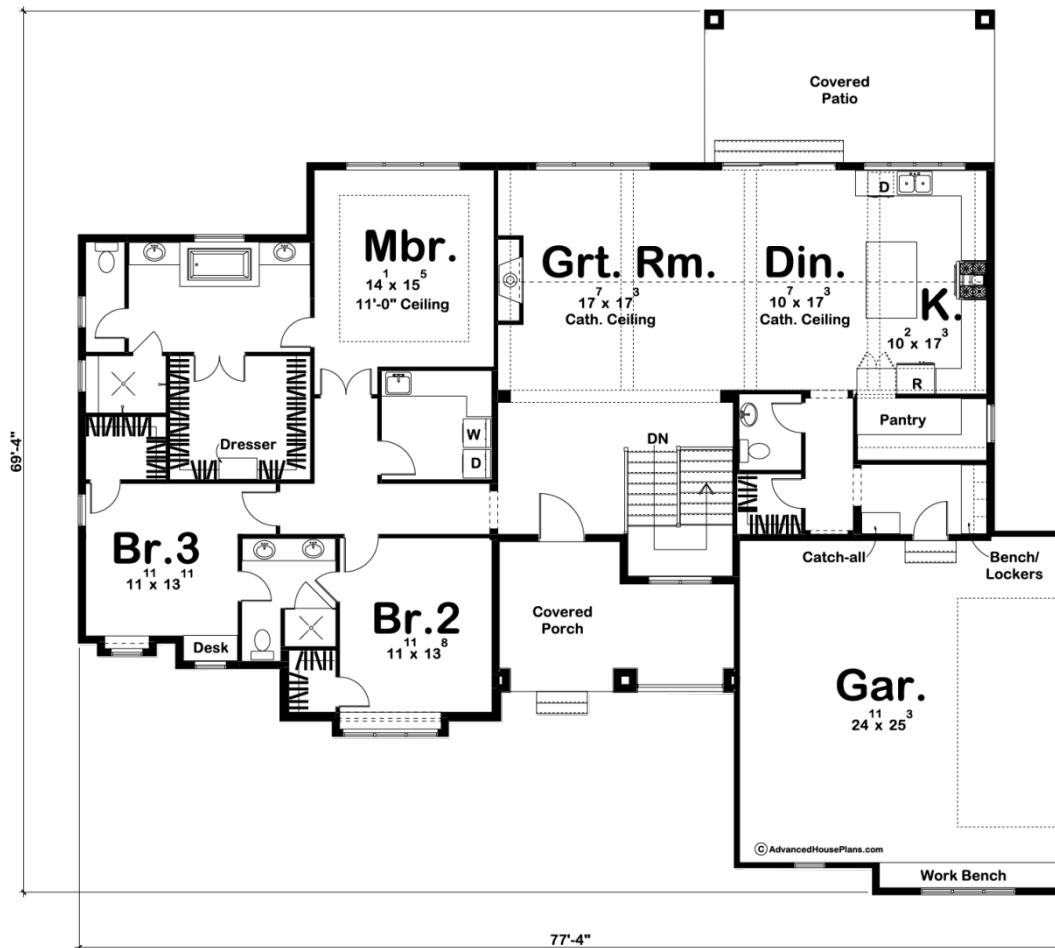




29410 - Fire Ridge Data Sheet

2448 SQ FT	3 BEDS	3 BATHS	2 BAYS	78' 0" WIDE	70' 0" DEEP
---------------	-----------	------------	-----------	----------------	----------------



Construction Specs

Layout

Bedrooms

Bathrooms	3
Garage Bays	2
Square Footage	
Main Level	2448 Sq. Ft.
Garage	691 Sq. Ft.
Total Finished Area	2448 Sq. Ft.
Exterior Dimensions	
Width	78' 0"
Depth	70' 0"
Ridge Height <i>Calculated from main floor line</i>	29' 0"
Default Construction Stats <i>Stats are unique to the individual plan.</i>	
Foundation Type	Basement
Exterior Wall Construction	2x4
Roof Pitches	12/12 Primary 10/12, 4/12 Secondary
Foundation Wall Height	9'
Main Wall Height	10'

Plan Description

The great expanses of this Modern Mountain 1 story house plan are highlighted by two separate outdoor living areas -- a covered front porch, and covered patio. Inside, immediate impressions are made by a soaring wood-beamed cathedral ceiling in the great room, dinette and kitchen. The kitchen, with expansive work island, is open to the dining area and offers a large walk-in pantry. Away from the living areas, the main floor's master suite features an oversized walk-in closet, and his and her vanities in the bath. Opposite, bedroom 2 and 3 share a Jack-n-Jill bath and both have their own walk-in closets. The side load garage offers great street appeal to this Modern house plan.