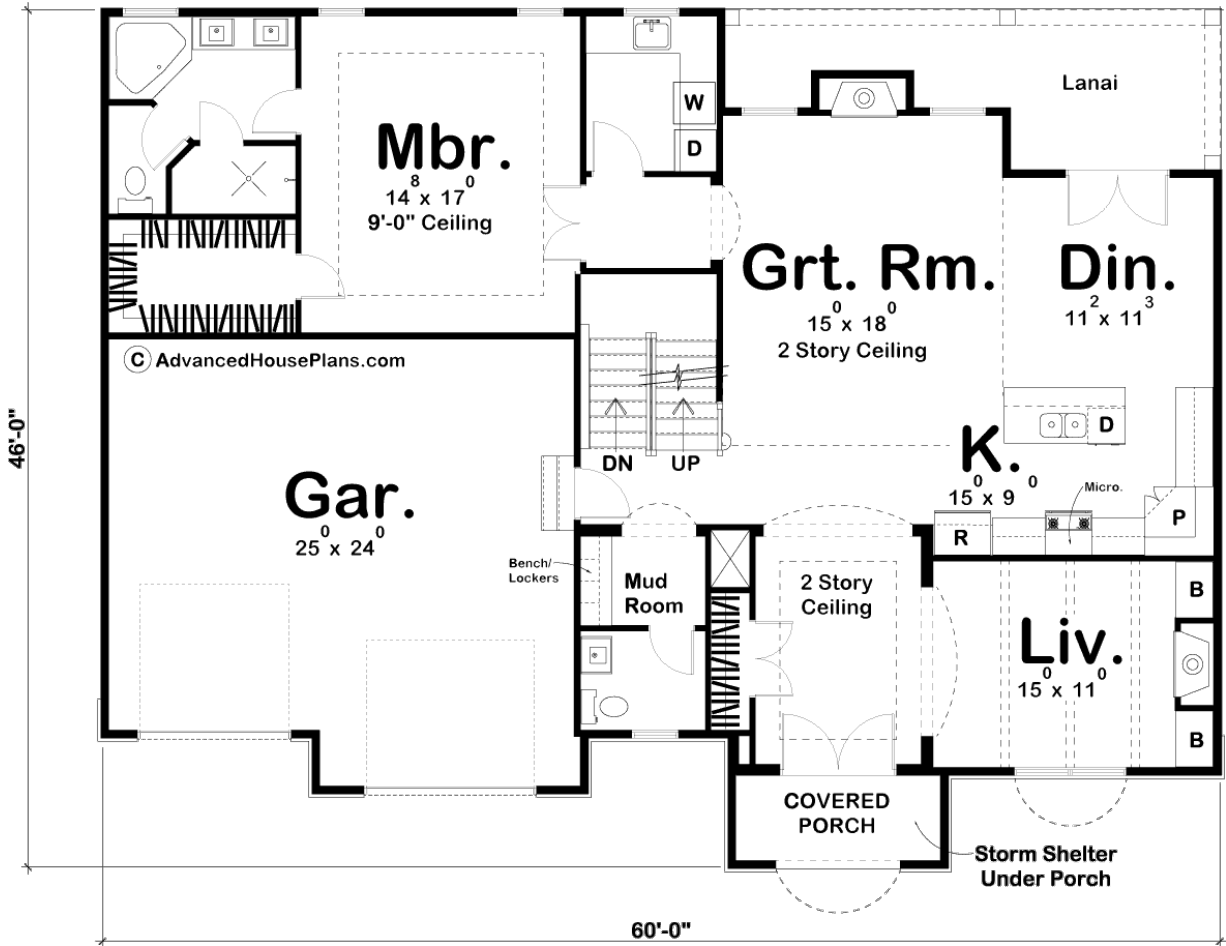
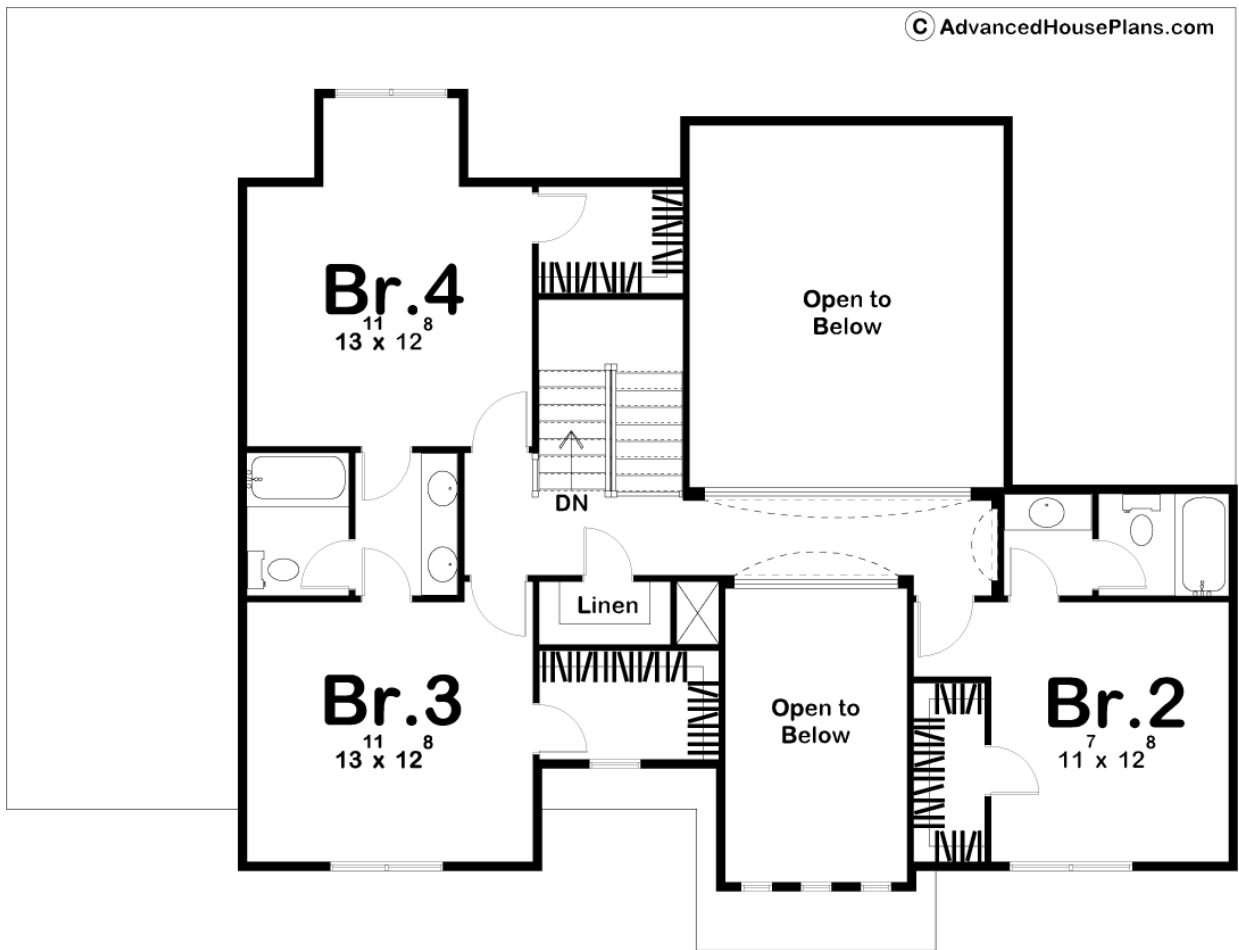




29366 - Faith Jueen Data Sheet

2712 SQ FT	4 BEDS	4 BATHS	2 BAYS	60' 0" WIDE	46' 0" DEEP
---------------	-----------	------------	-----------	----------------	----------------





Construction Specs

Layout

Bedrooms	4
Bathrooms	4
Garage Bays	2

Square Footage

Main Level	1666 Sq. Ft.
Second Level	1046 Sq. Ft.
Garage	584 Sq. Ft.
Total Finished Area	2712 Sq. Ft.

Exterior Dimensions

Width	60' 0"
Depth	46' 0"
Ridge Height	28' 0"
<i>Calculated from main floor line</i>	

Default Construction Stats

Stats are unique to the individual plan.

Foundation Type	Basement
Exterior Wall Construction	2x4
Roof Pitches	6/12
Foundation Wall Height	9'
Main Wall Height	9'
Second Wall Height	8'

Plan Description

An appealing blend of textures enhances the exterior of this classic Mediterranean style 1.5-story house plan. Inside, guests are welcomed by a 2-story-high entry that opens to a formal living room with boxed beam ceiling and a fireplace flanked by bookcases. Further inside, a soaring 2-story-high ceiling establishes a sense of grandeur in the great room. The kitchen, with its pantry and island workstation, adjoins the dining area, which opens onto a rear lanai, where guests can mingle before dinner is served. On the opposite side of the first floor, a generously sized master suite is tucked away for privacy. The well-appointed master bath includes a corner tub, walk-in shower, compartmented toilet and walk-in closet. Three additional bedrooms occupy the second level, which offers a birds-eye view of the great room and entry area below. Bedroom 2 enjoys a private bath. Bedrooms 3 and 4 each feature a walk-in closet. A sunny cove in bedroom 4 provides the perfect spot to relax with a good book. Back on the main floor, the 3-car garage gains entry into the home with easy access to a mud room, powder bath and staircase to the upper level or basement. A storm shelter in the basement offers a peace of mind beneath the front covered porch.