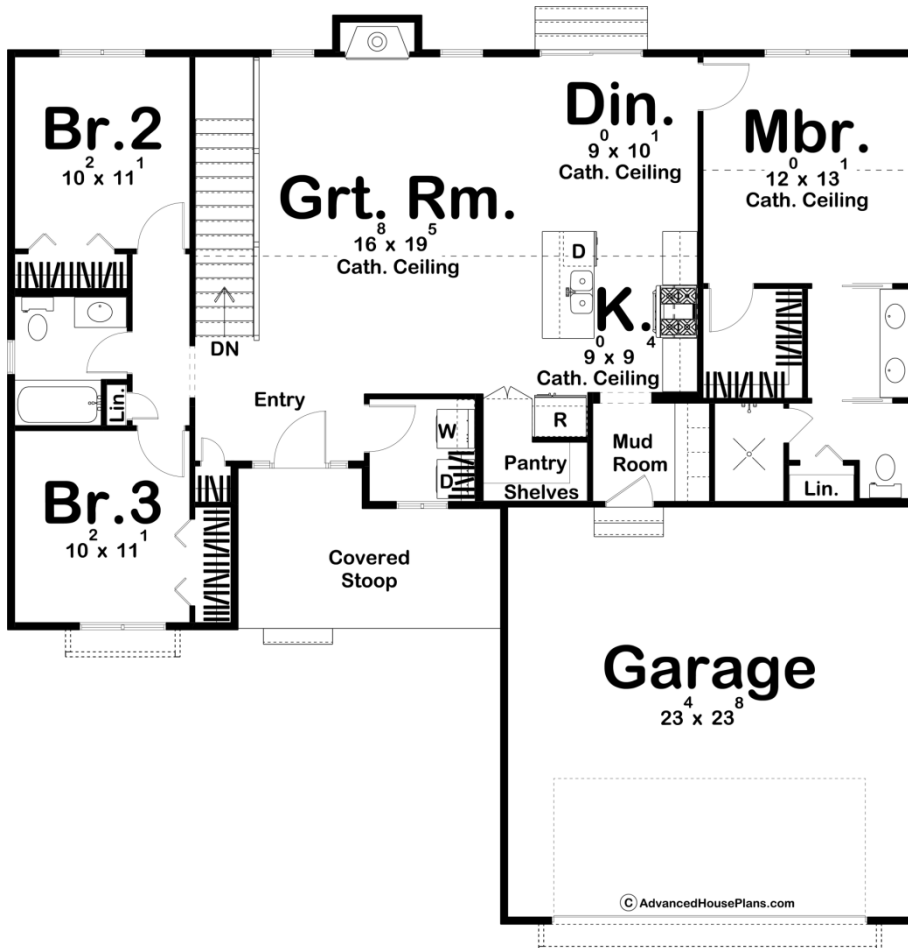




29896 - Fairbury Data Sheet

| | | | | | |
|---------------|-----------|------------|-----------|----------------|----------------|
| 1457 SQ FT | 3 BEDS | 2 BATHS | 2 BAYS | 52' 6" WIDE | 52' 4" DEEP |
|---------------|-----------|------------|-----------|----------------|----------------|





Construction Specs

Layout

| | |
|-------------|---|
| Bedrooms | 3 |
| Bathrooms | 2 |
| Garage Bays | 2 |

Square Footage

| | |
|---------------------|--------------|
| Main Level | 1457 Sq. Ft. |
| Garage | 580 Sq. Ft. |
| Total Finished Area | 1457 Sq. Ft. |

Exterior Dimensions

| | |
|--|--------|
| Width | 52' 6" |
| Depth | 52' 4" |
| Ridge Height <i>Calculated from main floor line</i> | 23' |

Default Construction Stats

Stats are unique to the individual plan.

| | |
|----------------------------|-------------------------------|
| Foundation Type | Basement |
| Exterior Wall Construction | 2x4 |
| Roof Pitches | 10/12 Primary, 8/12 Secondary |
| Foundation Wall Height | 9' |
| Main Wall Height | 8' |

Plan Description

The Fairbury is a beautiful modern farmhouse with a stunning exterior. The combination of board and batten siding, standing seam metal roof accents, and a pair of shed dormers, gives this home unique curb appeal. Just inside the home, you'll find a large great room that lies under a soaring cathedral ceiling and is warmed by a fireplace. The kitchen, dining room, and great room flow seamlessly in an open layout. The kitchen includes a large walk-in pantry and an island with a snack bar. The master suite also lies under its own cathedral ceiling and includes his/her vanities, a walk-in closet, and a walk-in shower. On the other side of the home, bedrooms 2 and 3 share a centrally located hall bathroom. The home's 2 car garage enters the home through a convenient mudroom what includes a bench and lockers. An optional finished basement adds 1184 sq ft and includes an additional family room, a rec room, a 4th bedroom, and an amazing craft room with built-in shelves.