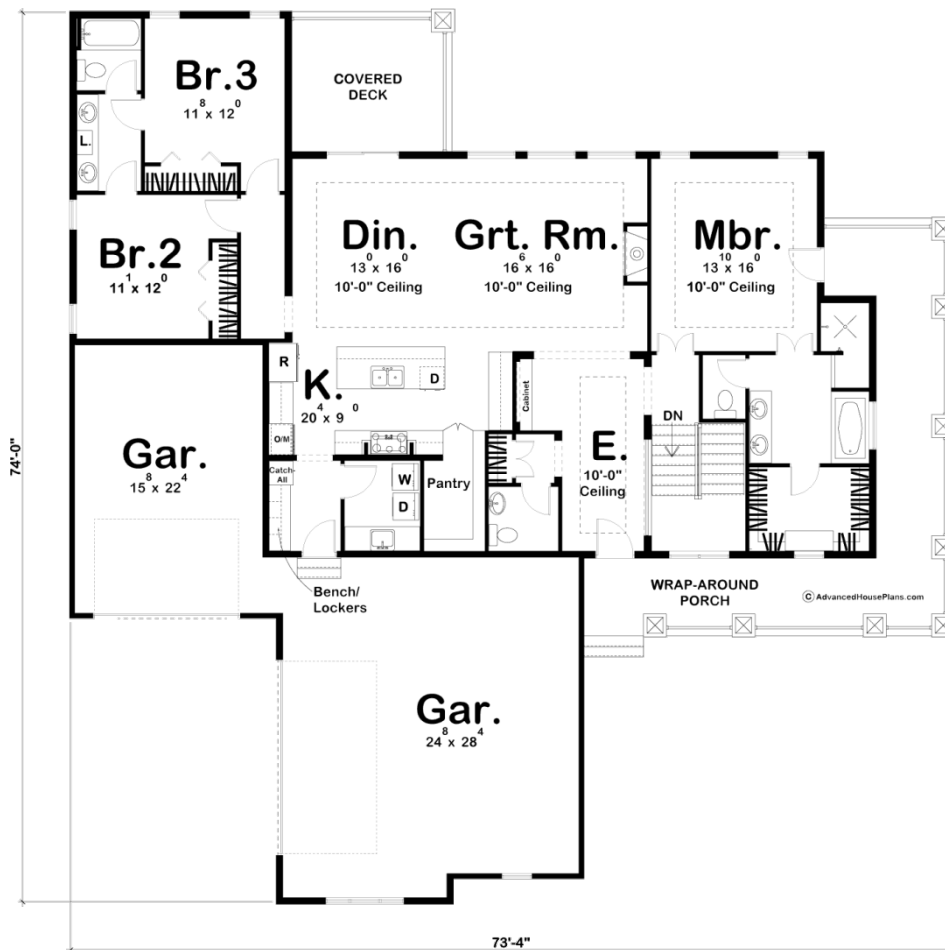




29370 - Fair Acres Data Sheet

2135 SQ FT	3 BEDS	3 BATHS	3 BAYS	74' 0" WIDE	74' 0" DEEP
---------------	-----------	------------	-----------	----------------	----------------



Construction Specs

Layout

Bedrooms

Bathrooms	3
-----------	---

Garage Bays	3
-------------	---

Square Footage

Main Level	2135 Sq. Ft.
------------	--------------

Garage	1074 Sq. Ft.
--------	--------------

Total Finished Area	2135 Sq. Ft.
---------------------	--------------

Exterior Dimensions

Width	74' 0"
-------	--------

Depth	74' 0"
-------	--------

Ridge Height	26'
--------------	-----

Calculated from main floor line

Default Construction Stats

Stats are unique to the individual plan.

Foundation Type	Basement
-----------------	----------

Exterior Wall Construction	2x4
----------------------------	-----

Roof Pitches	10/12 Primary 4/12 Secondary
--------------	------------------------------

Foundation Wall Height	9'
------------------------	----

Main Wall Height	9'
------------------	----

Plan Description

This beautifully configured Modern Farmhouse house plan offers amenities that are usually found in much larger home designs. On the outside, tapered pillars line the wrap-around porch and put on a striking display of curb appeal. Just inside the ranch floor plan, the entry area greets guest with a coat closet, cabinet and powder bath. The entry's 10-foot ceiling continues into the Great Room, which is warmed by a fireplace and brightened by a trio of generous windows to the rear. The ranch kitchen boasts plenty of counter space in addition to the spacious island's work area. Beyond the dining area, a covered deck extends entertaining options. The master suite accesses the wrap-around porch and enjoys a luxurious bath, complete with compartmented toilet, walk-in shower, and large walk-in closet. On the other side of this house plan, bedrooms 2 and 3 share a Jack-and-Jill bath with dual sinks and a compartmented toilet.