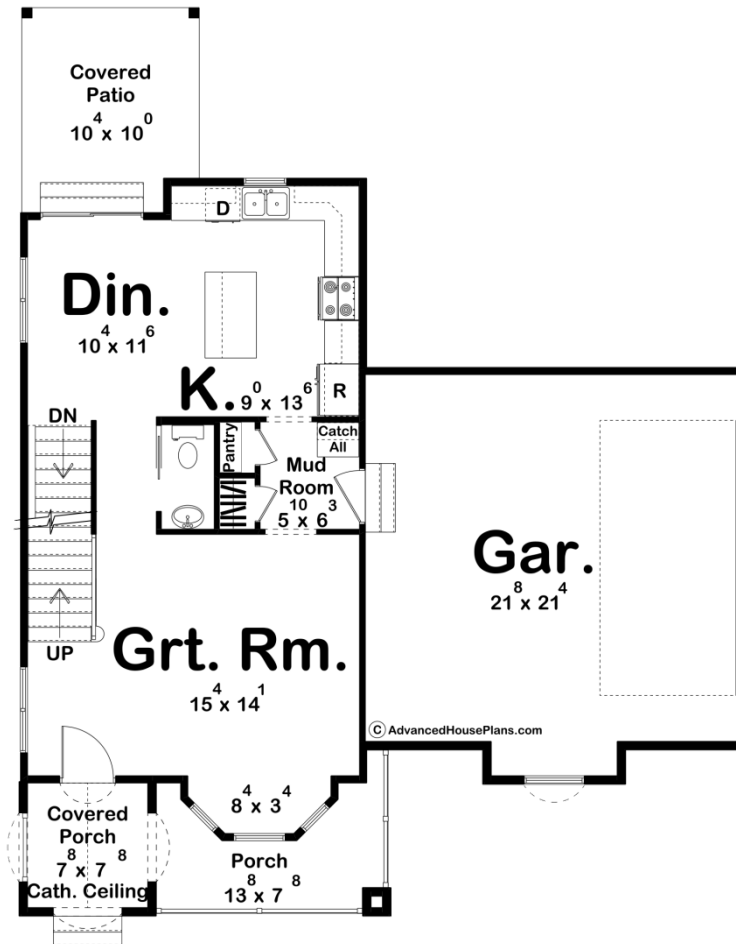
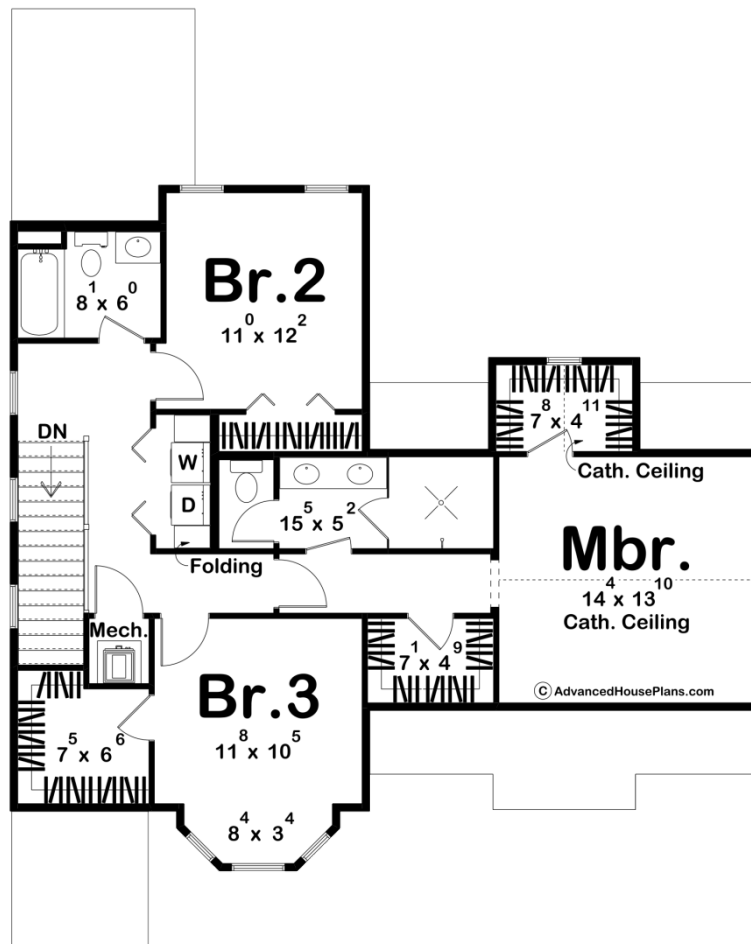




30495 - Evelyn Data Sheet

1720 SQ FT	3 BEDS	3 BATHS	2 BAYS	42' 0" WIDE	52' 8" DEEP
---------------	-----------	------------	-----------	----------------	----------------





Construction Specs

Layout

Bedrooms	3
Bathrooms	3
Garage Bays	2

Square Footage

Main Level	708 Sq. Ft.
Second Level	1012 Sq. Ft.
Covered Area	179 Sq. Ft.
Garage	500 Sq. Ft.
Total Finished Area	1720 Sq. Ft.

Exterior Dimensions

Width	42' 0"
Depth	52' 8"

Default Construction Stats

Stats are unique to the individual plan.

Foundation Type	Basement
Exterior Wall Construction	2x4
Roof Pitches	Primary 14/12, Secondary 6/12
Foundation Wall Height	9'
Main Wall Height	9'
Second Wall Height	8'

Plan Description

Imagine living in the Evelyn, a two-story modern Victorian house that seamlessly blends timeless elegance with contemporary comfort. This dream home features a classic Victorian façade with intricate detailing, including decorative trim, gables, and a front porch. Large windows with ornate frames and a steeply pitched roof enhance its traditional charm. Attached is a two-car garage, providing ample space for your vehicles. Inside, you're greeted by a cozy great room, perfect for entertaining. Beyond the great room, you will find the dining room and kitchen located at the rear of the home. The kitchen is a chef's delight, featuring a large island with seating and plenty of cabinetry, making it perfect for both everyday meals and entertaining guests. The house boasts three generously sized bedrooms, each designed with comfort and style in mind. The master suite is a true retreat, featuring a spacious bedroom and two walk-in closets. The ensuite bathroom includes a walk-in shower, dual vanities, and a private water closet. This modern Victorian house plan combines the best of traditional and contemporary design, offering a beautiful and functional living space perfect for families and entertaining. With its blend of historical charm and modern amenities, this home is sure to be a timeless classic.