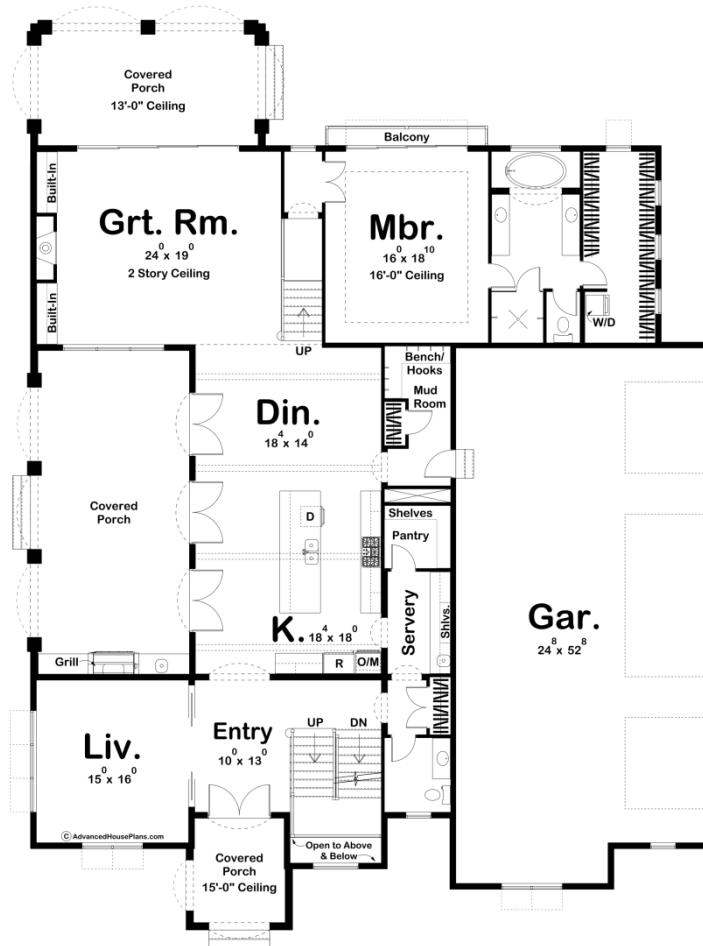
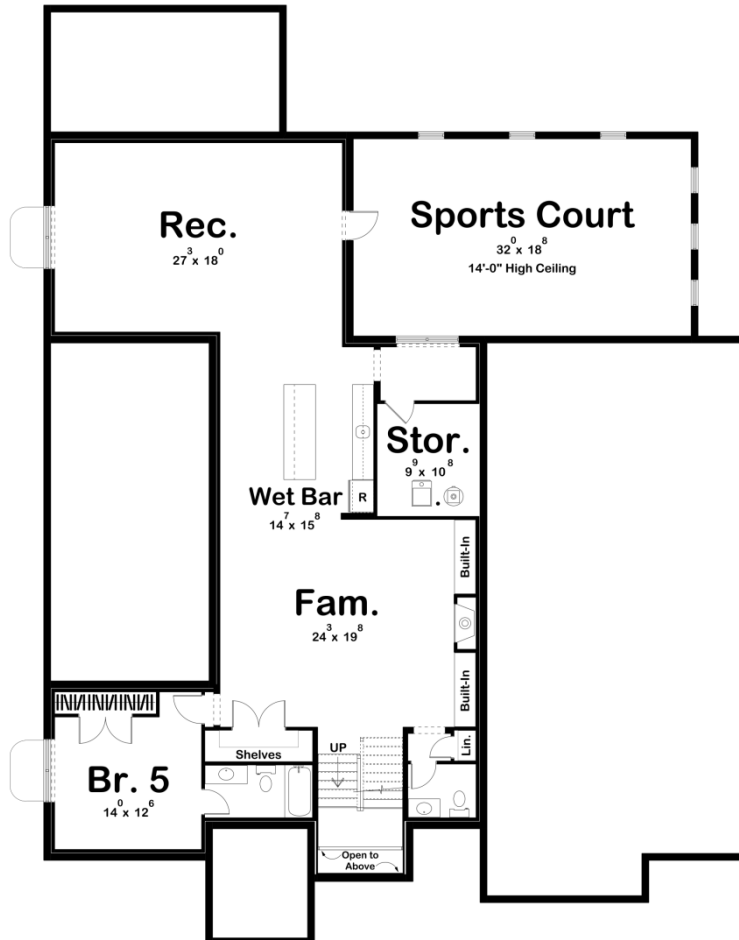
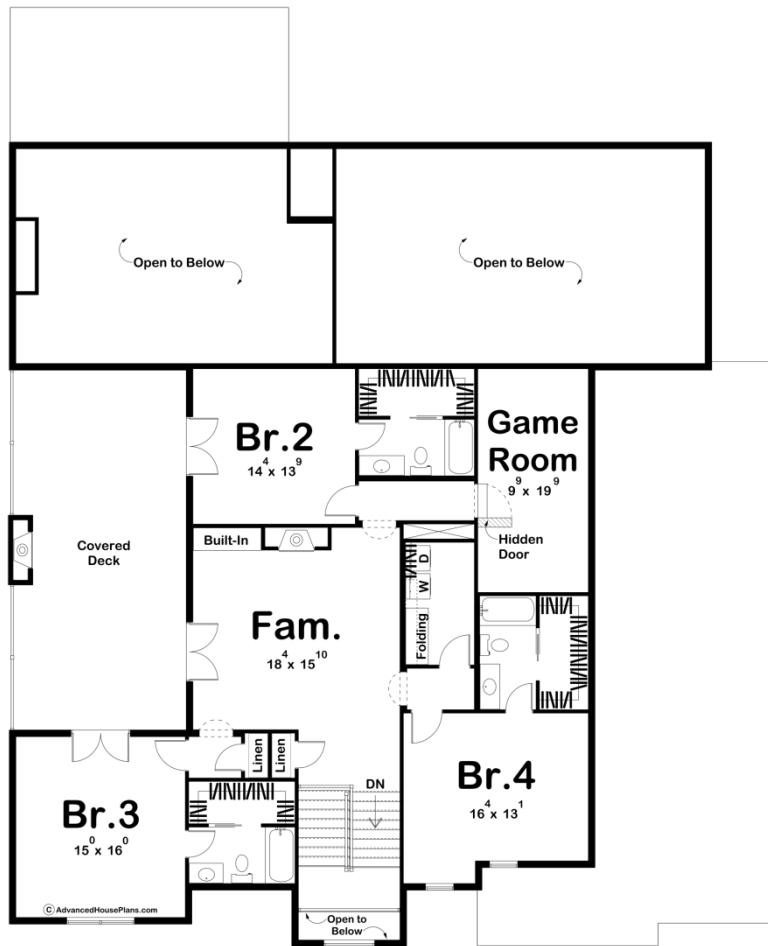




30171 - Englewood Data Sheet

| | | | | | |
|---------------|-----------|------------|-----------|----------------|----------------|
| 4598 SQ FT | 4 BEDS | 5 BATHS | 4 BAYS | 67' 0" WIDE | 89' 0" DEEP |
|---------------|-----------|------------|-----------|----------------|----------------|





Construction Specs

Layout

| | |
|-------------|---|
| Bedrooms | 4 |
| Bathrooms | 5 |
| Garage Bays | 4 |

Square Footage

| | |
|---------------------|--------------|
| Main Level | 2750 Sq. Ft. |
| Second Level | 1848 Sq. Ft. |
| Covered Area | 885 Sq. Ft. |
| Garage | 1305 Sq. Ft. |
| Total Finished Area | 4598 Sq. Ft. |

Exterior Dimensions

| | |
|--|--------|
| Width | 67' 0" |
| Depth | 89' 0" |
| Ridge Height <i>Calculated from main floor line</i> | 34' 0" |

Default Construction Stats

Stats are unique to the individual plan.

| | |
|----------------------------|--------------|
| Foundation Type | Basement |
| Exterior Wall Construction | 2x4 |
| Roof Pitches | 6/12 Primary |
| Foundation Wall Height | 9' |
| Main Wall Height | 10' |
| Second Wall Height | 9' |

Plan Description

The Englewood plan is an elegant Mediterranean style house plan that is sure to leave you amazed! The exterior showcases contrasting stucco siding with a tile roof and low pitched hip rooflines. A large covered front porch with a soaring 15' high ceiling greets guests into the home. Once inside the home, you'll find yourself in the entryway. Adjacent to the entryway is a beautiful formal living room. An arched opening leads from the entry into the kitchen area. The kitchen includes a massive island with a snack ledge, a servery with a prep sink, and a walk-in pantry. The dining room and kitchen lead to a covered porch through 3 sets of French doors. The covered porch is perfect for entertaining guests with its outdoor kitchen with a built-in sink and grill. The great room is warmed by a fireplace that is flanked by built-in bookshelves. The great room's soaring 2 story ceiling makes the space feel huge. The great room leads to a rear covered porch through a quad sliding door. A short flight of stairs leads up to the private master suite. The master bedroom lies under a tall 16' trayed ceiling and has its own private balcony accessible

through a quad sliding door. The master bathroom has a soaking tub, his/her vanities, and a walk-in closet with a washer and dryer. Upstairs, you'll find 3 additional bedrooms. Each bedroom has access to its own bathroom and walk-in closet. A family room is warmed by a fireplace and has access to a covered deck with an outdoor fireplace. A hidden door leads from the hallway into a game room. An optional finished basement adds an additional bedroom, 2 bathrooms, a family room, wet bar, rec room, and sports court. Back on the main floor, the home's massive 4 car garage accesses the home through a convenient mudroom with a bench and lockers.