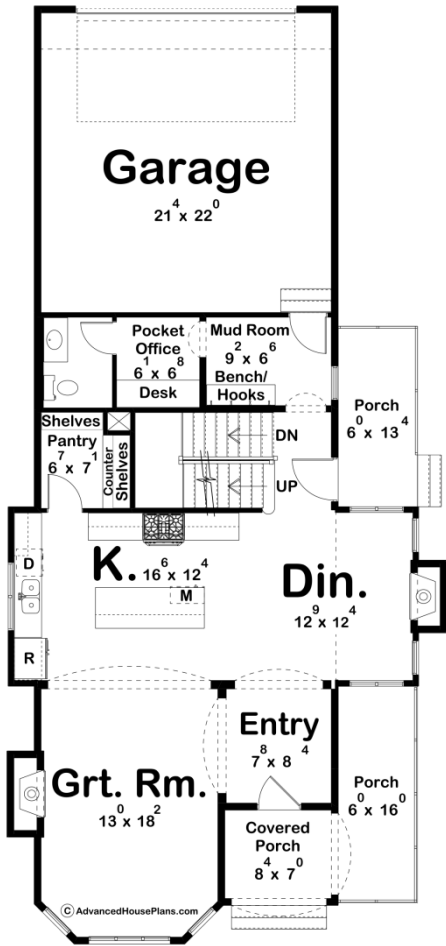
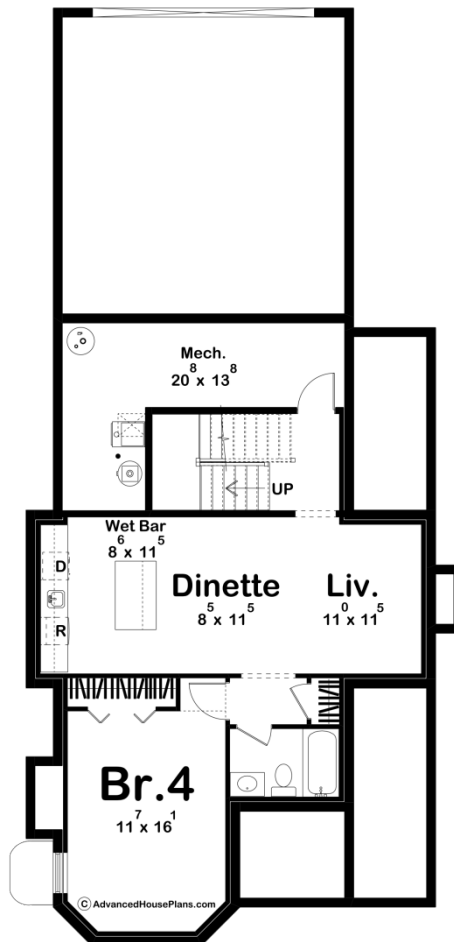
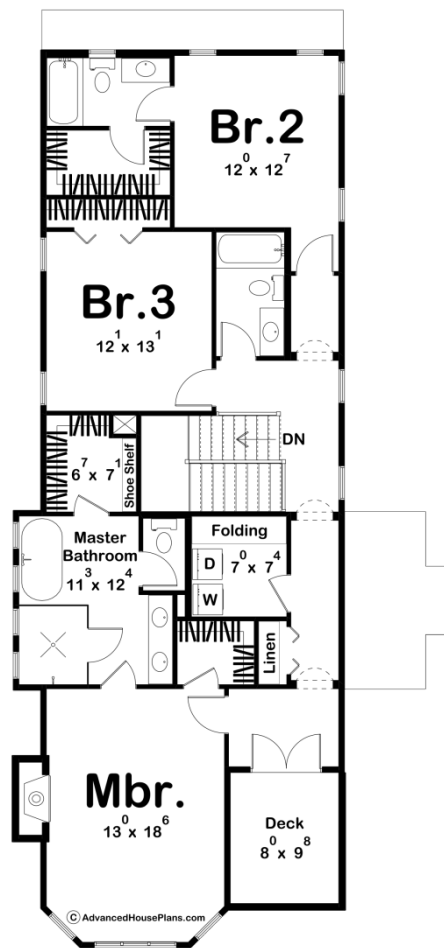




30362 - Elizabeth Data Sheet

2301 SQ FT	3 BEDS	4 BATHS	2 BAYS	32' 0" WIDE	68' 6" DEEP
---------------	-----------	------------	-----------	----------------	----------------





Construction Specs

Layout		
Bedrooms		3
Bathrooms		4
Garage Bays		2
Square Footage		
Main Level		1023 Sq. Ft.
Second Level		1278 Sq. Ft.
Covered Area		58 Sq. Ft.
Garage		491 Sq. Ft.
Total Finished Area		2301 Sq. Ft.
Exterior Dimensions		
Width		32' 0"
Depth		68' 6"
Default Construction Stats		
Stats are unique to the individual plan.		
Foundation Type		Basement
Exterior Wall Construction		2x4
Roof Pitches	Primary 14/12, Secondary 20/12, 10/12, Flat	
Foundation Wall Height		9'
Main Wall Height		10'
Second Wall Height		9'

Plan Description

Step into the embrace of timeless elegance and modern comfort with this exquisite modern Victorian home. Nestled amidst a serene landscape, the exterior showcases an enchanting fusion of architectural grandeur and contemporary sophistication. The facade boasts intricate stone accents that gracefully meld with the rich textures of the exterior, while towering stone chimneys punctuate the skyline, evoking a sense of old-world charm. A symphony of design elements harmonizes as you step through the threshold of this enchanting abode. Upon entering the main floor, your senses are immediately captivated by the grandeur of the great room, a lavish space to your left that invites you to bask in its warm embrace. Sunlight pours through large, opulent windows, casting a soft glow on the meticulously curated details that adorn every corner. Continuing your journey, the allure of the home unfolds as you venture further. The spacious kitchen and dining room beckon, an epitome of culinary delight and convivial gatherings. Sleek modern amenities blend seamlessly with Victorian-inspired details, creating a space that is both functional and aesthetically pleasing. A masterfully designed layout seamlessly connects these spaces, ensuring a seamless flow of movement and interaction. The rear of the home unveils a practical yet stylish gem – a garage thoughtfully concealed behind a charming facade, accessible through a well-appointed

mudroom. This thoughtful design touch ensures that practicality harmoniously coexists with the home's enchanting aesthetic. A journey to the upper floor reveals a private haven where dreams are nurtured. Three elegant bedrooms await, each exuding its own unique character and charm. The master bedroom, an opulent retreat located at the front of the home, is a sanctuary that indulges your senses. A private bath adorned with modern fixtures and vintage-inspired accents offers an oasis of relaxation, while his and hers walk-in closets provide ample space for sartorial expression. The remaining two bedrooms also boast their own bathrooms, creating an atmosphere of comfort and convenience that is second to none. Every detail has been meticulously curated to evoke a sense of continuity between the historical elegance of the Victorian era and the contemporary luxuries of modern living. In this modern Victorian masterpiece, you'll find a haven where the past gracefully intertwines with the present, creating a timeless sanctuary that speaks to the heart, mind, and soul.