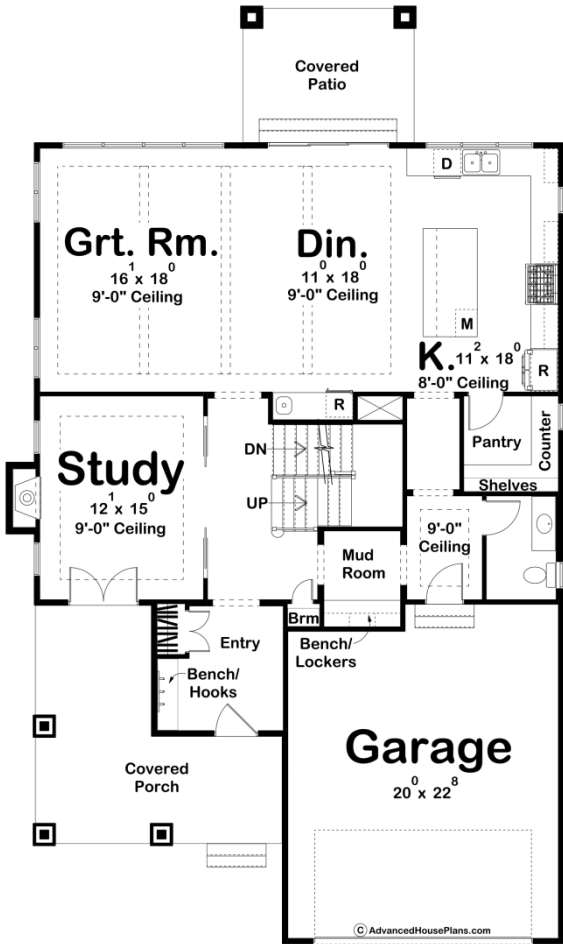
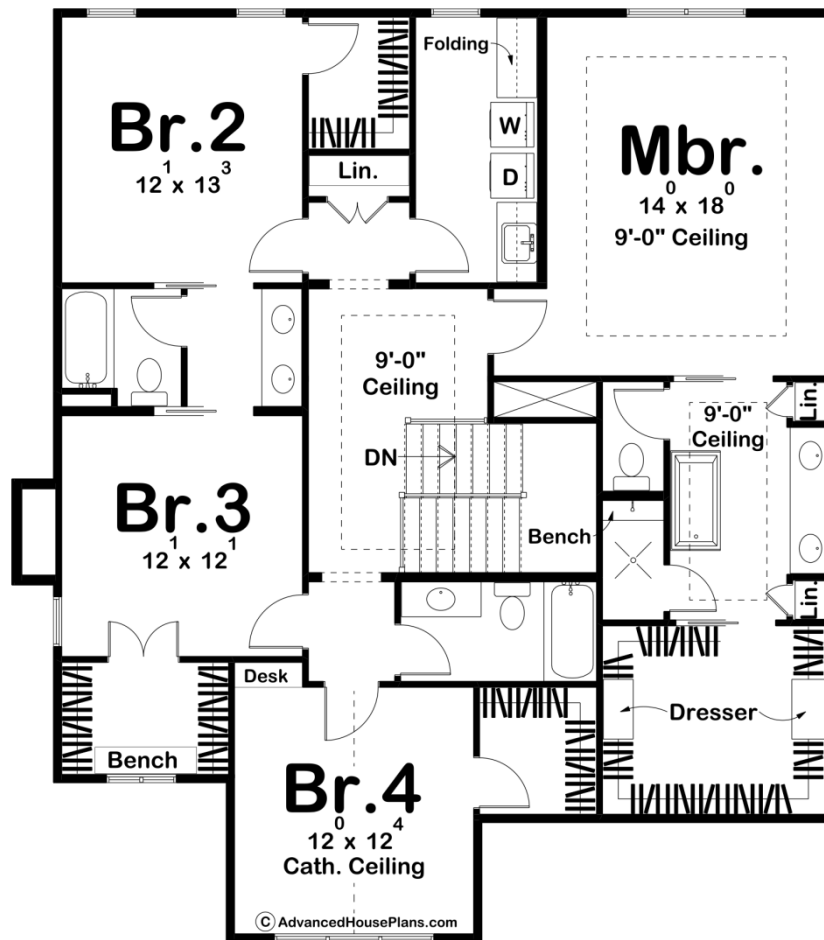




**29383 - Eastland Data Sheet**

3008 SQ FT	4 BEDS	4 BATHS	2 BAYS	41' 0" WIDE	69' 0" DEEP
---------------	-----------	------------	-----------	----------------	----------------





## Construction Specs

### Layout

Bedrooms	4
Bathrooms	4
Garage Bays	2

### Square Footage

Main Level	1444 Sq. Ft.
Second Level	1564 Sq. Ft.
Covered Area	357 Sq. Ft.
Garage	496 Sq. Ft.
Total Finished Area	3008 Sq. Ft.

### Exterior Dimensions

Width	41' 0"
Depth	69' 0"
Ridge Height	35' 0"
<i>Calculated from main floor line</i>	

## Default Construction Stats

*Stats are unique to the individual plan.*

Foundation Type	Basement
Exterior Wall Construction	2x4
Roof Pitches	Primary 10/12, Secondary 12/12, 4/12, 6/12
Foundation Wall Height	9'
Main Wall Height	9'
Second Wall Height	8'

## Plan Description

This cottage style house plan is a spacious 3,008 square foot home with 4 bedrooms and 4 bathrooms. The exterior of the home is charming, with a pitched roof, gables, and a covered front porch. The interior is open and welcoming, with a hallway that leads you directly into a private study, or into the spacious great room that is perfect for entertaining or family gatherings. The kitchen is a cook's dream, with plenty of counter space and storage, as well as a large center island and walk-in pantry. Head up the stairs to find all the bedrooms, the master suite being a true retreat, with a private bathroom and large walk-in closet. The other bedrooms are generously sized and have plenty of closet space. This house plan also includes a laundry room and a covered rear patio. With its charming cottage style and spacious layout, this house plan is perfect for a growing family.