

ADVANCED

HOUSE PLANS



30408 - Douglas Data Sheet

2783
SQ FT

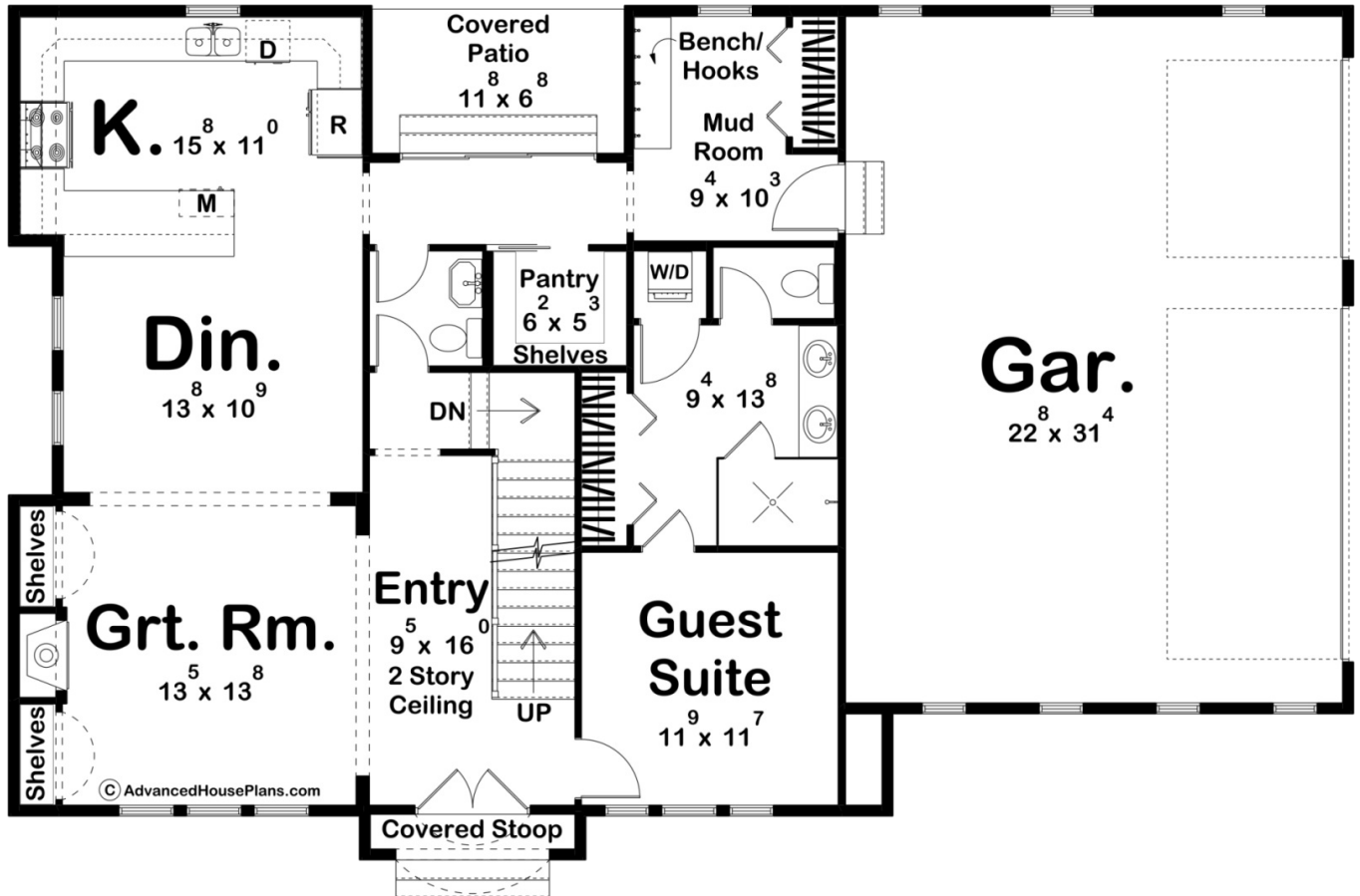
5
BEDS

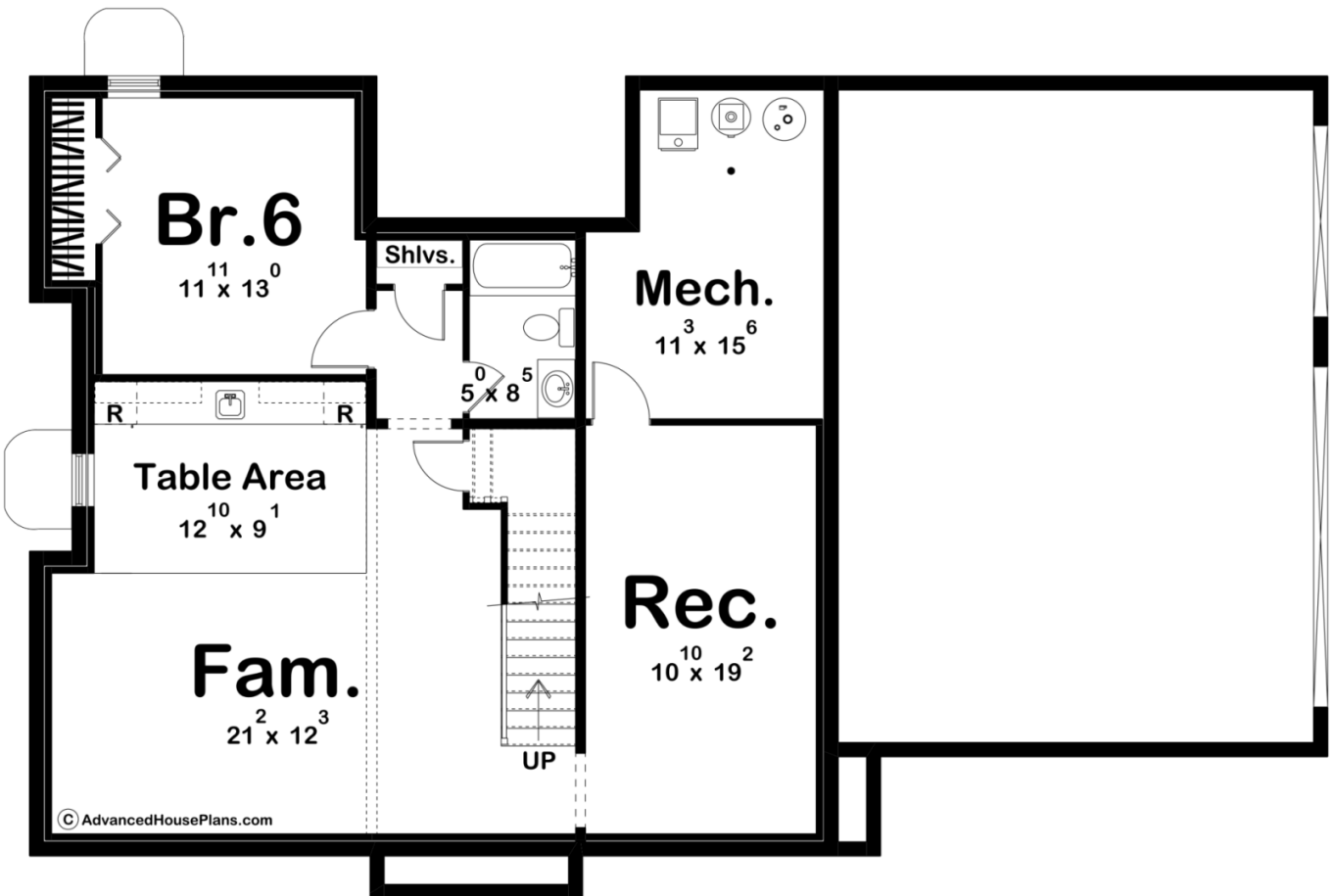
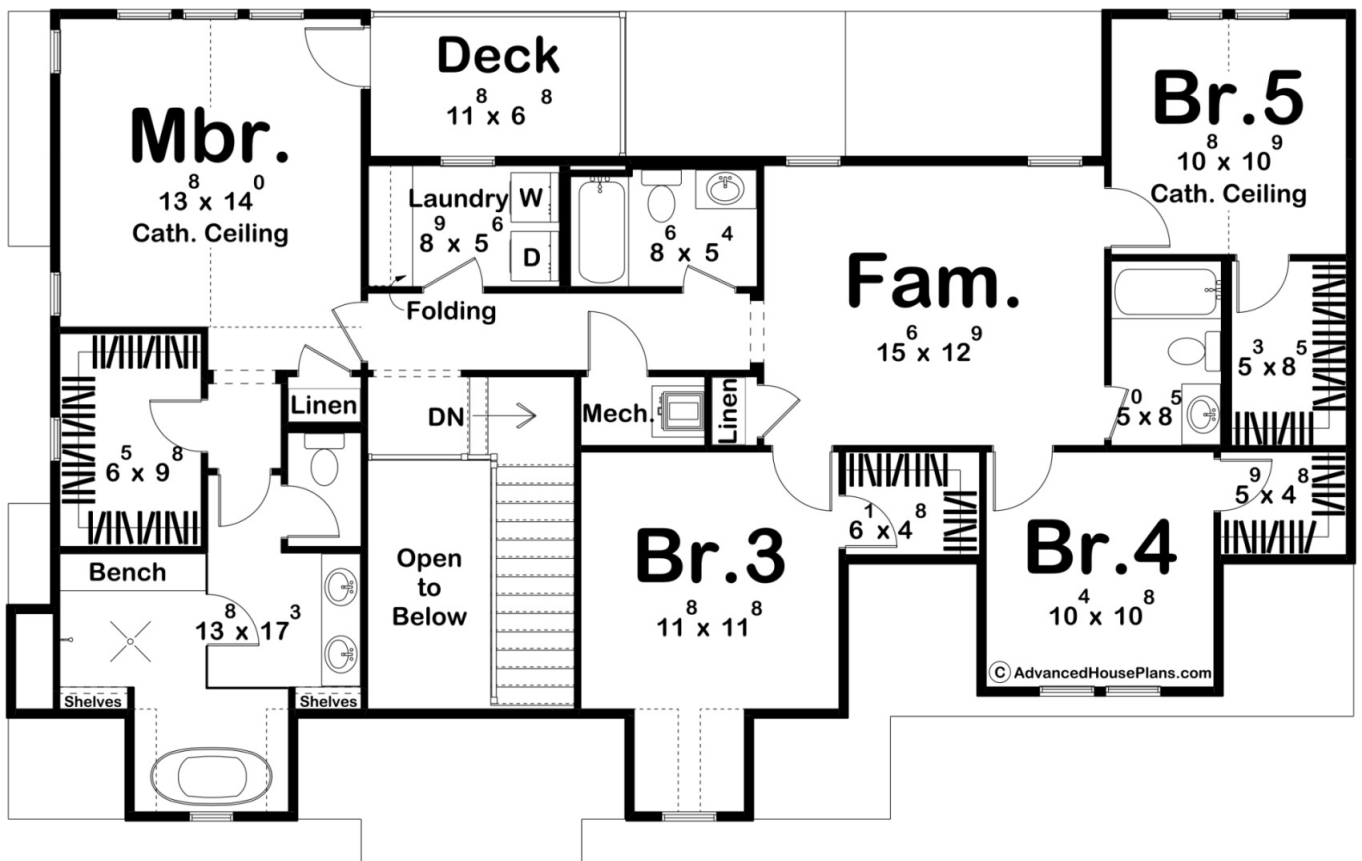
5
BATHS

3
BAYS

61' 0"
WIDE

38' 8"
DEEP





Layout	
Bedrooms	5
Bathrooms	5
Garage Bays	3
Square Footage	
Main Level	1292 Sq. Ft.
Second Level	1491 Sq. Ft.
Covered Area	98 Sq. Ft.
Garage	736 Sq. Ft.
Total Finished Area	2783 Sq. Ft.
Exterior Dimensions	
Width	61' 0"
Depth	38' 8"
Default Construction Stats	
<i>Stats are unique to the individual plan.</i>	
Foundation Type	Basement
Exterior Wall Construction	2x4
Roof Pitches	Primary 8/12, Secondary 12/12, Secondary 16/12
Foundation Wall Height	9'
Main Wall Height	9'
Second Wall Height	8'

Plan Description

Welcome to the epitome of timeless elegance and charm! Allow me to present to you a stunning Tudor-style residence that seamlessly blends traditional craftsmanship with modern luxury. This 5-bedroom, 5-bathroom masterpiece is designed to cater to both your family's needs and your desire for refined living.As you approach the property, you'll be captivated by the charming facade, characterized by steeply pitched roofs and exquisite brickwork.Step through the front door into a warm and inviting foyer, adorned with intricate woodwork and leaded glass accents. The expansive living room features a magnificent fireplace, perfect for cozy gatherings during colder months. The open floor plan seamlessly connects the living space to the dining area, creating an ideal setting for entertaining guests.The heart of this home is undoubtedly the gourmet kitchen. Whether you're a seasoned chef or simply enjoy casual family meals, this kitchen is designed to cater to your culinary aspirations.This home boasts five spacious bedrooms. The master suite is a sanctuary of relaxation, featuring a spa-like bathroom with a soaking tub, dual vanities, and a walk-in closet. Additionally, a thoughtfully designed guest suite provides a comfortable and private space.