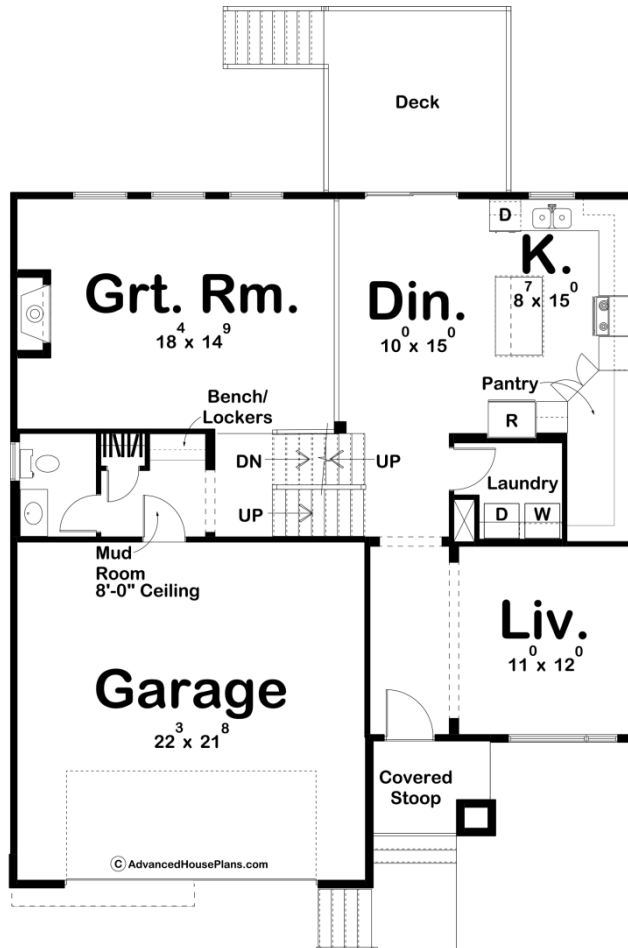
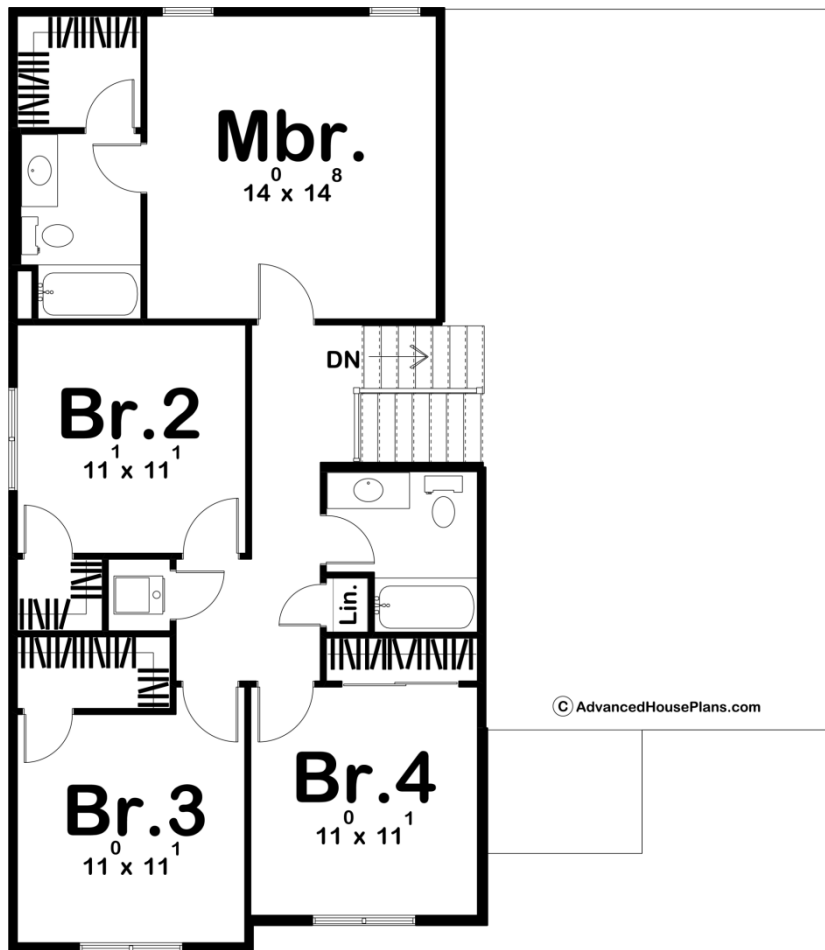




29698 - Densberger Data Sheet

| | | | | | |
|---------------|-----------|------------|-----------|----------------|----------------|
| 2066 SQ FT | 4 BEDS | 3 BATHS | 2 BAYS | 40' 0" WIDE | 57' 0" DEEP |
|---------------|-----------|------------|-----------|----------------|----------------|





Construction Specs

Layout

| | |
|-------------|---|
| Bedrooms | 4 |
| Bathrooms | 3 |
| Garage Bays | 2 |

Square Footage

| | |
|---------------------|--------------|
| Main Level | 1110 Sq. Ft. |
| Second Level | 956 Sq. Ft. |
| Garage | 501 Sq. Ft. |
| Total Finished Area | 2066 Sq. Ft. |

Exterior Dimensions

| | |
|-------|--------|
| Width | 40' 0" |
| Depth | 57' 0" |

Default Construction Stats

Stats are unique to the individual plan.

| | |
|-----------------|----------|
| Foundation Type | Basement |
|-----------------|----------|

| | |
|----------------------------|--------------|
| Exterior Wall Construction | 2x4 |
| Roof Pitches | 4/12 Primary |
| Foundation Wall Height | 9' |
| Main Wall Height | 9' |
| Second Wall Height | 8' |

Plan Description

The Densberger is a beautiful Modern Prairie style split-level home. This split level home has a unique floor plan that makes the living area feel larger. On the main floor, you will find a great kitchen with a walk-in pantry and an island with a breakfast bar. The great room includes a fireplace and has 3 windows with views of the back yard. There is also a convenient laundry room on the main level. On the upper level, you will find 4 bedrooms that are very well appointed. The master bedroom includes a walk-in closet and master bathroom. Bedrooms 2, 3, and 4 share a centrally located hall bathroom. On the lower level, the house is accessible from the 2 car garage through a practical mudroom with a bench and lockers. Downstairs you will also find a 2nd living area. The Densberger is a great starter home that appeals to home buyers and home builders alike due to its efficient footprint. Be sure to check out our split-level collection for more plans. As always any Advanced House Plans home plan can be customized to fit your needs with our alteration department. Whether you need to add another garage stall, change the front elevation, stretch the home larger or just make the home plan more affordable for your budget we can do that and more for you at Ahp.