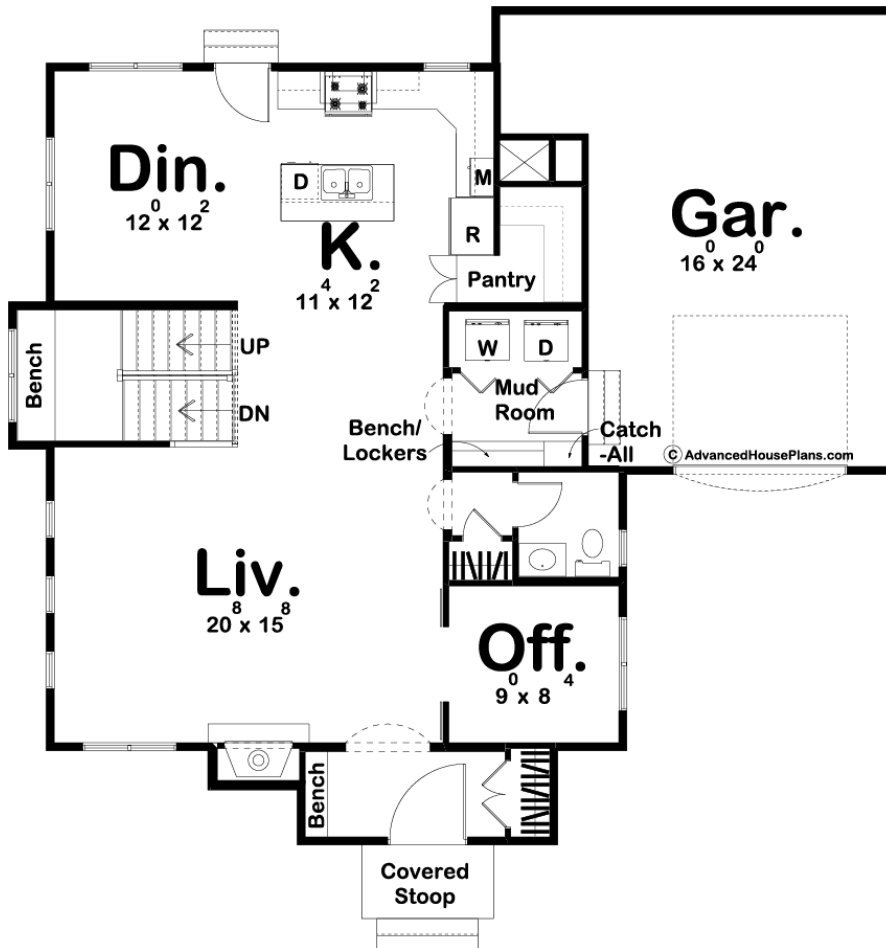
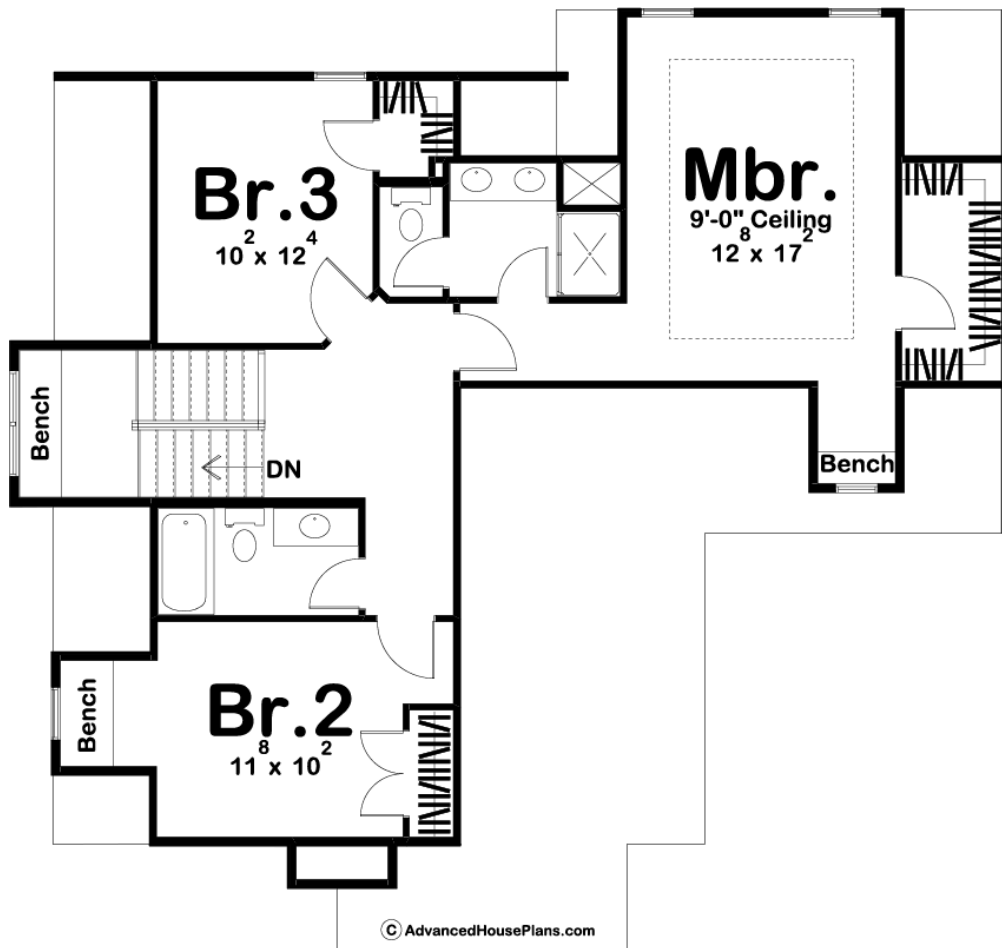




29753 - Crown Point Data Sheet

2031 SQ FT	3 BEDS	3 BATHS	1 BAYS	47' 0" WIDE	45' 0" DEEP
---------------	-----------	------------	-----------	----------------	----------------





Construction Specs

Layout

Bedrooms	3
Bathrooms	3
Garage Bays	1

Square Footage

Main Level	1125 Sq. Ft.
Second Level	906 Sq. Ft.
Garage	435 Sq. Ft.
Total Finished Area	2031 Sq. Ft.

Exterior Dimensions

Width	47' 0"
Depth	45' 0"

Default Construction Stats

Stats are unique to the individual plan.

Foundation Type	Basement
-----------------	----------

Exterior Wall Construction	2x4
Roof Pitches	16/12 Primary, 4/12 Secondary
Foundation Wall Height	9'
Main Wall Height	9'
Second Wall Height	8'

Plan Description

The Crown Point plan is a charming Cottage style plan that takes you back to a time when houses were built with uniqueness and character. The high pitched roof and stucco give this plan an old-world look with modern amenities. As you step into the home, you'll find yourself in an excellent entryway that includes a coat closet and a bench. Just off the entryway is a convenient office that is a great place to get some work done at home. The living room is warmed by a fireplace and flows seamlessly to the kitchen and dining room. The kitchen has a wonderful walk-in pantry and an island with a snack bar. Upstairs, you will find the home's bedrooms. The master suite is situated above the garage and includes a built-in bench and a walk-in closet. Bedrooms 2 and 3 share a centrally located hall bathroom. Back on the main floor, the house's 1 car garage accesses the home through a convenient mudroom with a bench and lockers.