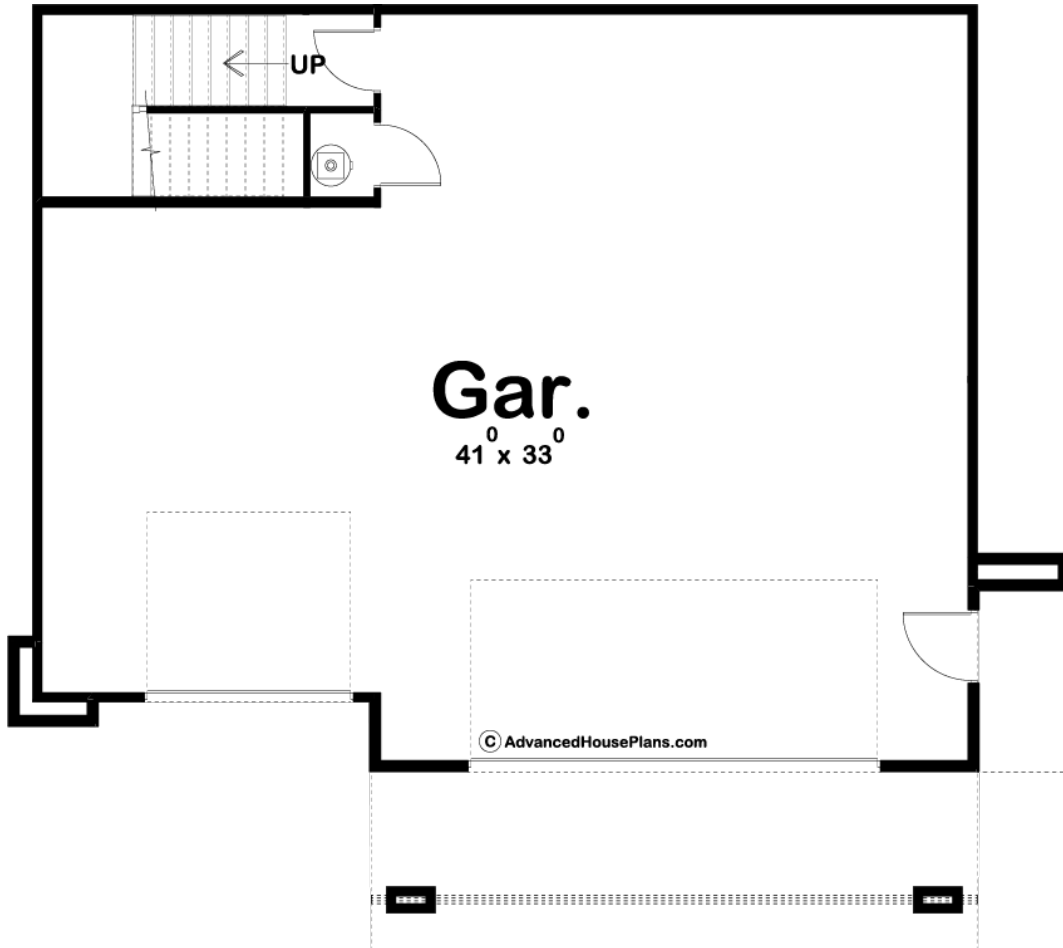
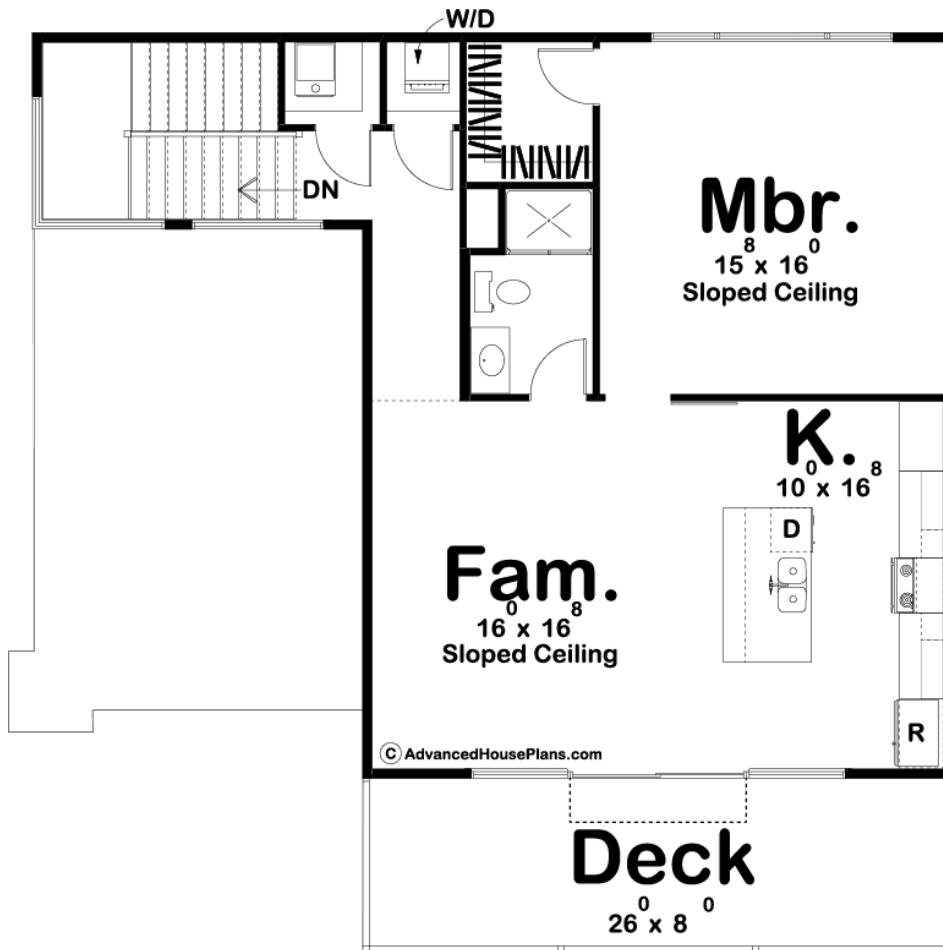




### 29744 - Cortland Data Sheet

932 SQ FT	1 BEDS	1 BATHS	3 BAYS	47' 0" WIDE	40' 0" DEEP
--------------	-----------	------------	-----------	----------------	----------------





## Construction Specs

### Layout

Bedrooms	1
Bathrooms	1
Garage Bays	3

### Square Footage

Main Level	932 Sq. Ft.
Garage	1358 Sq. Ft.
Total Finished Area	932 Sq. Ft.

### Exterior Dimensions

Width	47' 0"
Depth	40' 0"

### Default Construction Stats

*Stats are unique to the individual plan.*

Foundation Type	Slab
Exterior Wall Construction	2x4

Roof Pitches	1/12 Primary
Main Wall Height	10'
Second Wall Height	9'

## Plan Description

Modern styling, metal roof, thinset stone veneer, and cedar siding help set this 3 car apartment garage apart from its competition. On the lower level you will find a generously sized 3 car garage with enough room for a workshop. Upstairs you will find a perfectly situated 1 bedroom apartment. The first thing you will notice in this apartment is the wonderful open flow of the kitchen and family room under a beautiful sloped ceiling. The kitchen includes an island with a flush snack bar and a pantry. A large master bedroom with a walk-in closet shares a bathroom with the main living space.