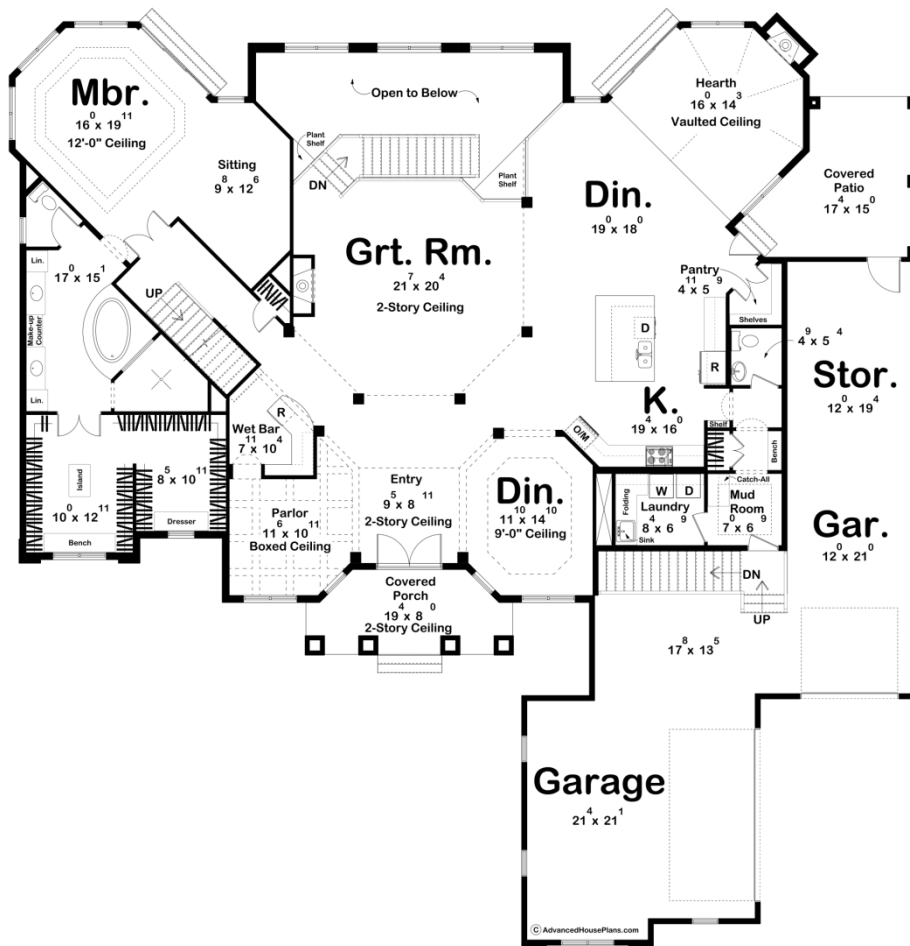
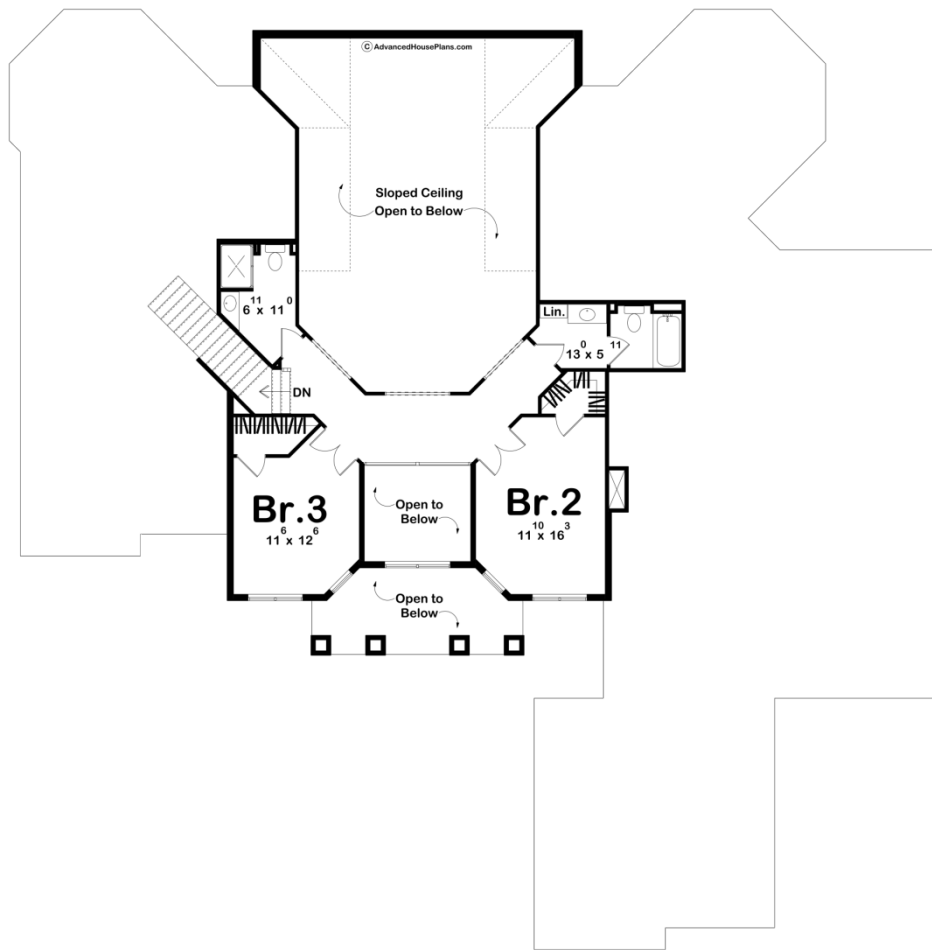




**29159 - Collamore Data Sheet**

3992 SQ FT	3 BEDS	4 BATHS	3 BAYS	85' 0" WIDE	86' 0" DEEP
---------------	-----------	------------	-----------	----------------	----------------





## Construction Specs

### Layout

Bedrooms	3
Bathrooms	4
Garage Bays	3

### Square Footage

Main Level	3245 Sq. Ft.
Second Level	747 Sq. Ft.
Garage	1216 Sq. Ft.
Total Finished Area	3992 Sq. Ft.

### Exterior Dimensions

Width	85' 0"
Depth	86' 0"
Ridge Height	31' 0"
<i>Calculated from main floor line</i>	

## Default Construction Stats

*Stats are unique to the individual plan.*

Foundation Type	Basement
Exterior Wall Construction	2x4
Roof Pitches	8/12
Foundation Wall Height	9'
Main Wall Height	10'
Second Wall Height	8'

## Plan Description

Soaring columns, accented by elegant arches, create a stunning centerpiece for the front of this grand 1-1/2 story house plan. Designed for unforgettable entertaining, the interior aspects are impressive, as guests are greeted with immediate views of a 2-story-high great room, set within an array of arched openings.

To the rear of the great room, a 3-story-high atrium is brightened by a soaring wall of windows. The 2-story-high entry hall is flanked by a formal dining room and a parlor with adjacent bar. To the side of the great room, the breakfast area, kitchen, and bayed hearth room interact openly. This area accesses a rear deck that is partially covered to facilitate outdoor dining, rain or shine. The kitchen offers plenty of counter space in addition to an island workspace/breakfast bar and a walk-in pantry. Just off the kitchen, a utility area includes a sizeable laundry room with counter and soaking sink, a powder bath and a coat closet with adjacent bench. This area accesses the 4-car garage area, which features one 2-car, side-by-side garage, and one 2-car tandem garage. The tandem garage accesses the rear covered deck and a secondary set of stairs leads from the garage area to the basement. On the opposite side of the home, the master suite lies quietly behind a set of double doors. The bedroom, with a 12-foot-high ceiling, includes a large sitting area and access to a private deck. The bath area abounds in luxurious amenities, which include his and her vanities, an opulent oval soaking tub, spacious walk-in shower, compartmented toilet and an expansive walk-in closet with built-in dresser and bench. On the second level, bedrooms 2 and 3 each have walk-in closets and enjoy their own baths. Arched openings provide breathtaking views to the entry hall and great room below.