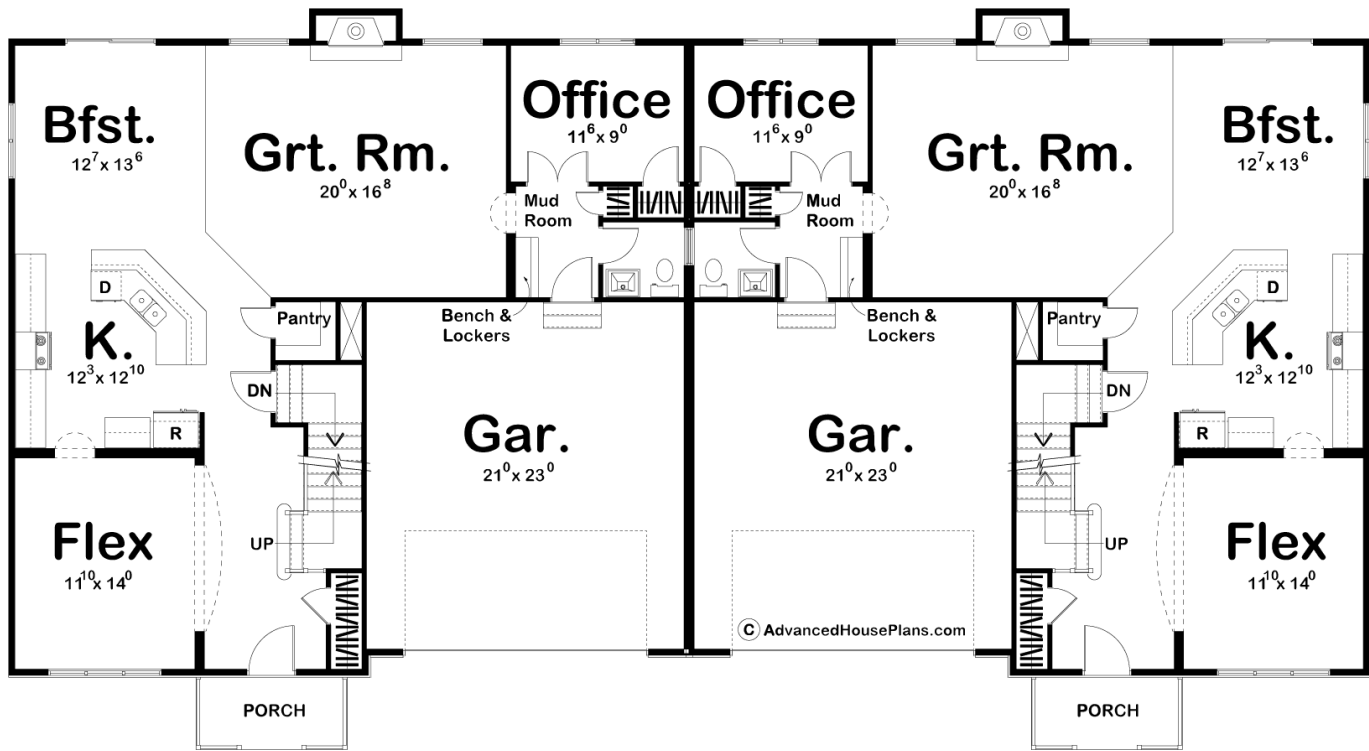
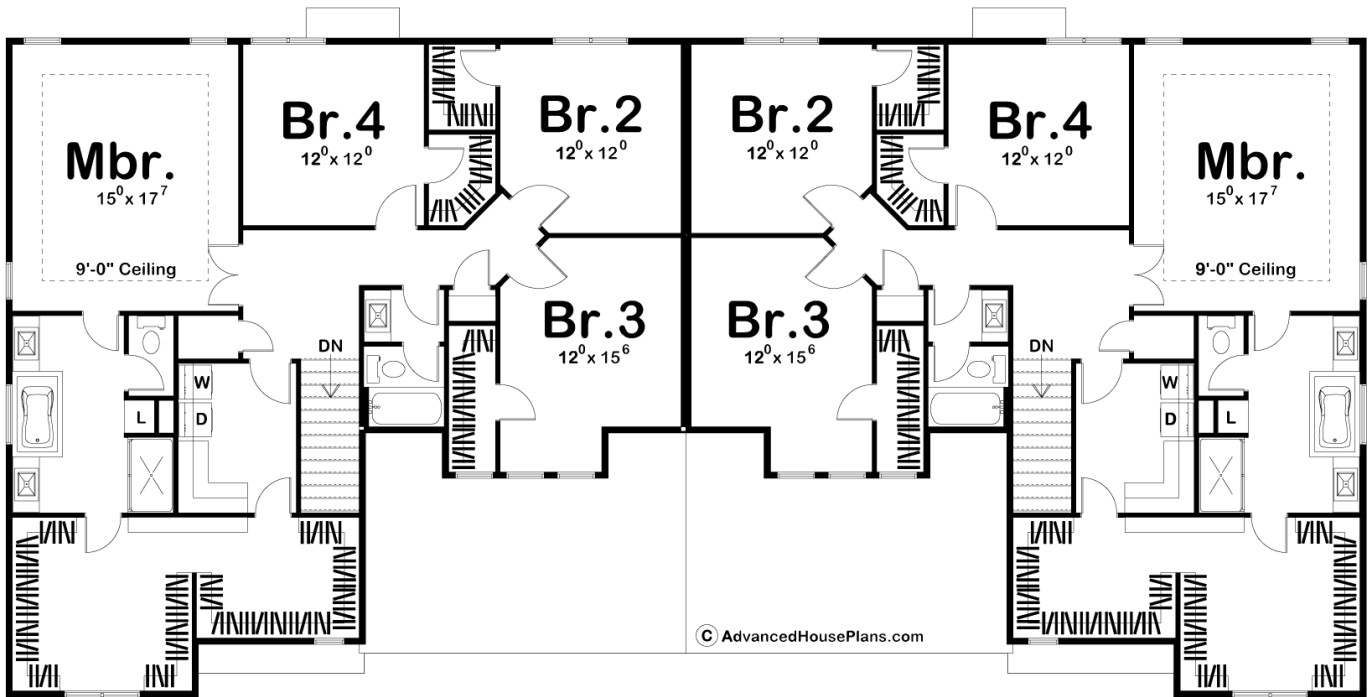




**29319 - Clement Data Sheet**

2899 SQ FT	4 BEDS	3 BATHS	2 BAYS	90' 0" WIDE	42' 0" DEEP
---------------	-----------	------------	-----------	----------------	----------------





## Construction Specs

### Layout

Bedrooms	4
Bathrooms	3
Garage Bays	2

### Square Footage

Main Level	1363 Sq. Ft.
Second Level	1536 Sq. Ft.
Garage	498 Sq. Ft.
Total Finished Area	2899 Sq. Ft.

### Exterior Dimensions

Width	90' 0"
Depth	42' 0"
Ridge Height	34' 0"
<i>Calculated from main floor line</i>	

## Default Construction Stats

*Stats are unique to the individual plan.*

Foundation Type	Basement
Exterior Wall Construction	2x4
Roof Pitches	8/12 Primary, 12/12 Secondary
Foundation Wall Height	9'
Main Wall Height	9'
Second Wall Height	8'

## Plan Description

European styling provides an air of charming sophistication to this 2-story, multi-family house plan. Inside, guests are greeted by an entry area that opens to a flexible-use room. A few steps further reveal the kitchen with its angled island work area, walk-in pantry, and ample counter space. The adjacent breakfast area provides access the outside through sliding doors. Open to the kitchen and breakfast area is the great room, with its fireplace and views to the rear. Just off the great room lies a private office, which is accessed via the mud room. The mud room includes a bench, lockers, coat closet and powder bath, and also accesses the 2-car garage. Upstairs, a pampering master suite features a bath area with his and her vanities, soaking tub, shower, compartmented toilet, and an extensive walk-in closet that also accesses the laundry room. Bedrooms 2, 3 and 4 also enjoy generous closet storage and they share a central bath.