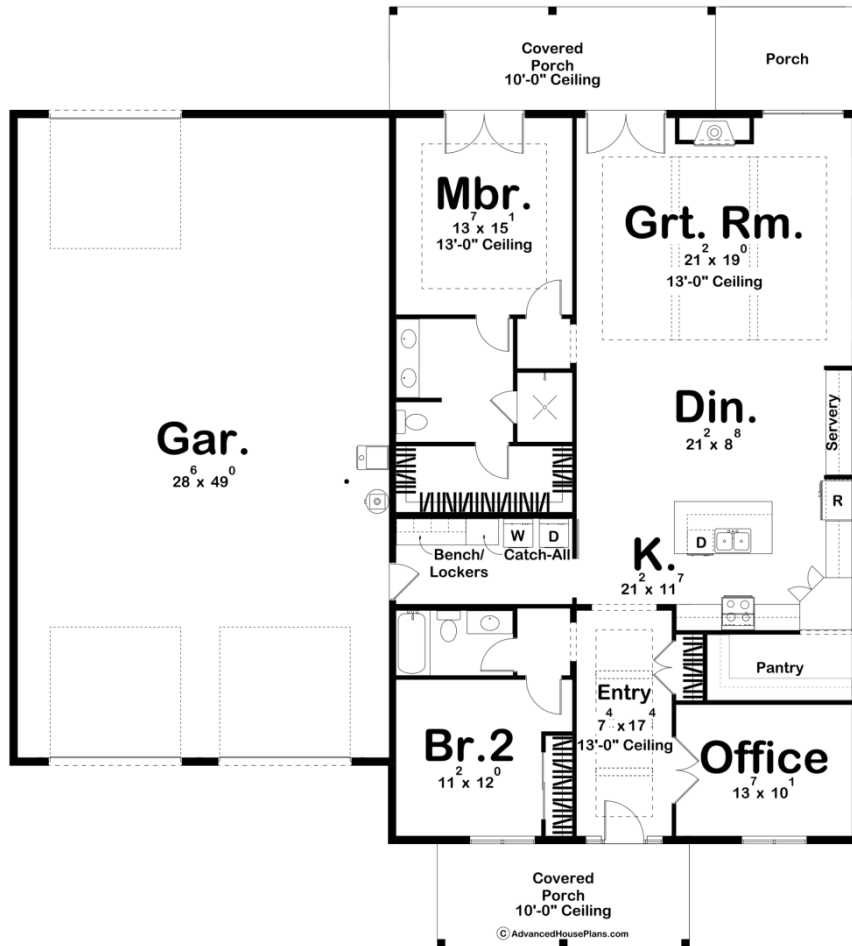




### 30279 - Chamberlain Data Sheet

2016 SQ FT	2 BEDS	2 BATHS	3 BAYS	65' 0" WIDE	72' 0" DEEP
---------------	-----------	------------	-----------	----------------	----------------



### Construction Specs

Layout

Bedrooms

Bathrooms	2
Garage Bays	3
<b>Square Footage</b>	
Main Level	2016 Sq. Ft.
Covered Area	443 Sq. Ft.
Garage	1450 Sq. Ft.
Total Finished Area	2016 Sq. Ft.
<b>Exterior Dimensions</b>	
Width	65' 0"
Depth	72' 0"
Ridge Height <i>Calculated from main floor line</i>	21' 10"
<b>Default Construction Stats</b> <i>Stats are unique to the individual plan.</i>	
Foundation Type	Slab
Exterior Wall Construction	2x6
Roof Pitches	Primary 3/12, Secondary 4/12
Main Wall Height	12'

## Plan Description

The Chamberlain plan is a modern style barndominium house plan with a beautiful dark exterior and wood accents. It boasts 2016 square feet, 2 bedrooms and 2 bathrooms. A covered 10' ceiling porch brings you into a lengthy 13' tall entryway and an office right off to the side. Heading straight in brings you into a large open concept area, complete with a spacious walk-in pantry, a severy, and kitchen island. The great room provides a tall 13' ceiling with connection to a covered 10' ceiling porch out to the rear of the home. The bedrooms can be found off the main living areas, the master complete with a 13' ceiling, access to the covered porch, a spacious bathroom with double vanities, separate shower and large walk-in closet. Bedroom two shares a hallway bathroom with guests and is right off the mudroom and laundry area that leads out to a large three-car garage and workshop area.