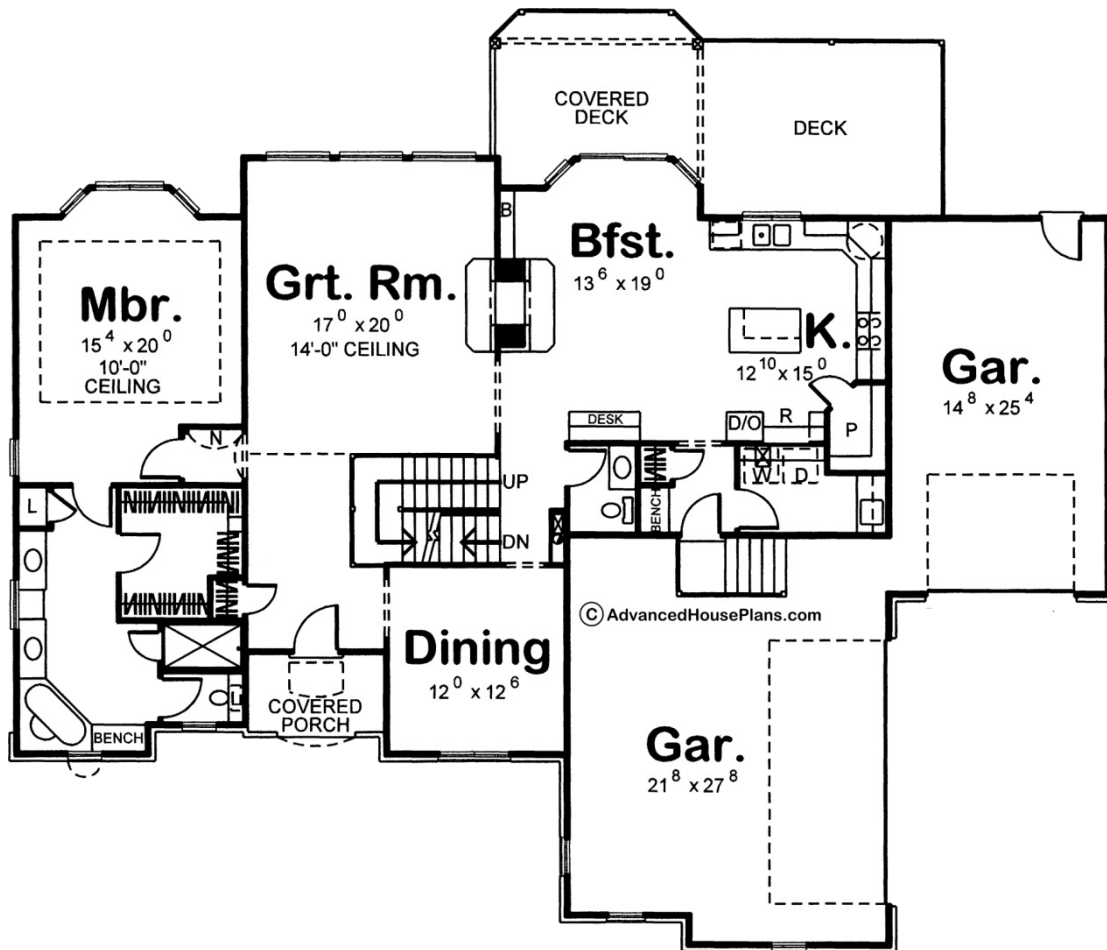
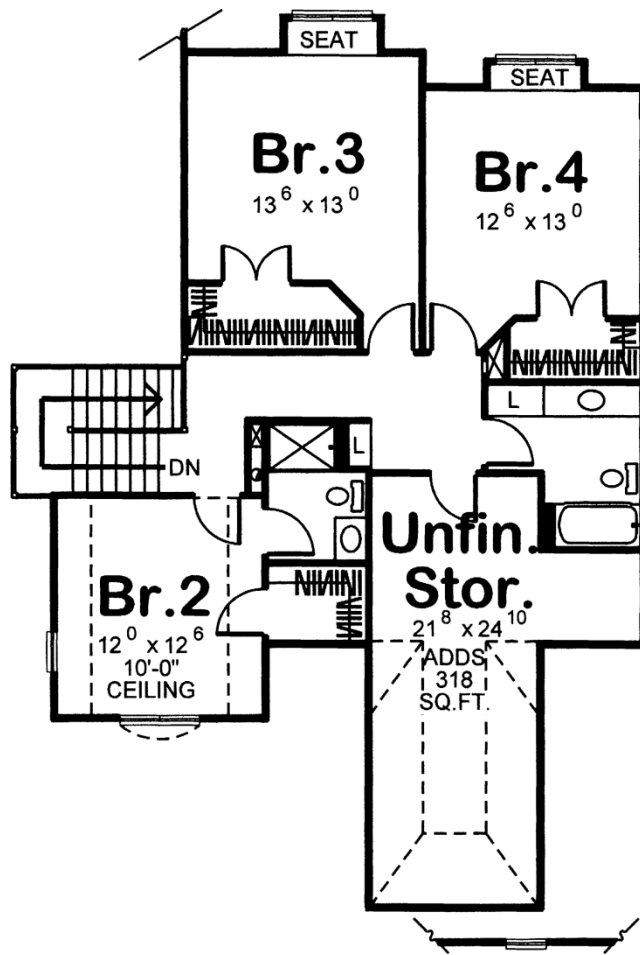




29132 - Chadsworth Data Sheet

2843 SQ FT	4 BEDS	4 BATHS	3 BAYS	75' 0" WIDE	54' 0" DEEP
---------------	-----------	------------	-----------	----------------	----------------





Construction Specs

Layout	
Bedrooms	4
Bathrooms	4
Garage Bays	3
Square Footage	
Main Level	1936 Sq. Ft.
Second Level	907 Sq. Ft.
Garage	994 Sq. Ft.
Total Finished Area	2843 Sq. Ft.
Exterior Dimensions	
Width	75' 0"
Depth	54' 0"
Ridge Height	31'
<i>Calculated from main floor line</i>	

Default Construction Stats

Stats are unique to the individual plan.

Foundation Type	Basement
Exterior Wall Construction	2x4
Roof Pitches	8/12 F-B, 12/12 S-S
Foundation Wall Height	9'
Main Wall Height	9'
Second Wall Height	8'

Plan Description

A chorus of gables, accompanied by tasteful stone detailing, beautify the front of this traditional-style 1.5-story house plan. Inside, a sunny great room shares its see-thru fireplace with the adjoining breakfast area. Outdoor living areas, both covered and open, lie just outside the breakfast area and kitchen, which includes a walk-in pantry, breakfast island, built-in desk and generous counter space. Two separate garage areas offer special accommodations for vehicle storage. The master suite is accessed through an entry cove, adorned by a built-in display niche. Its bath includes his and her vanities, a corner soaking tub, dressing bench and walk-in closet. On the second level, bedroom 2 enjoys a 10-foot-high ceiling and its own bath. Bedrooms 3 and 4 both have window seats to the rear and share a central hall bath. An unfinished storage area offers possibilities left only to one's imagination.