

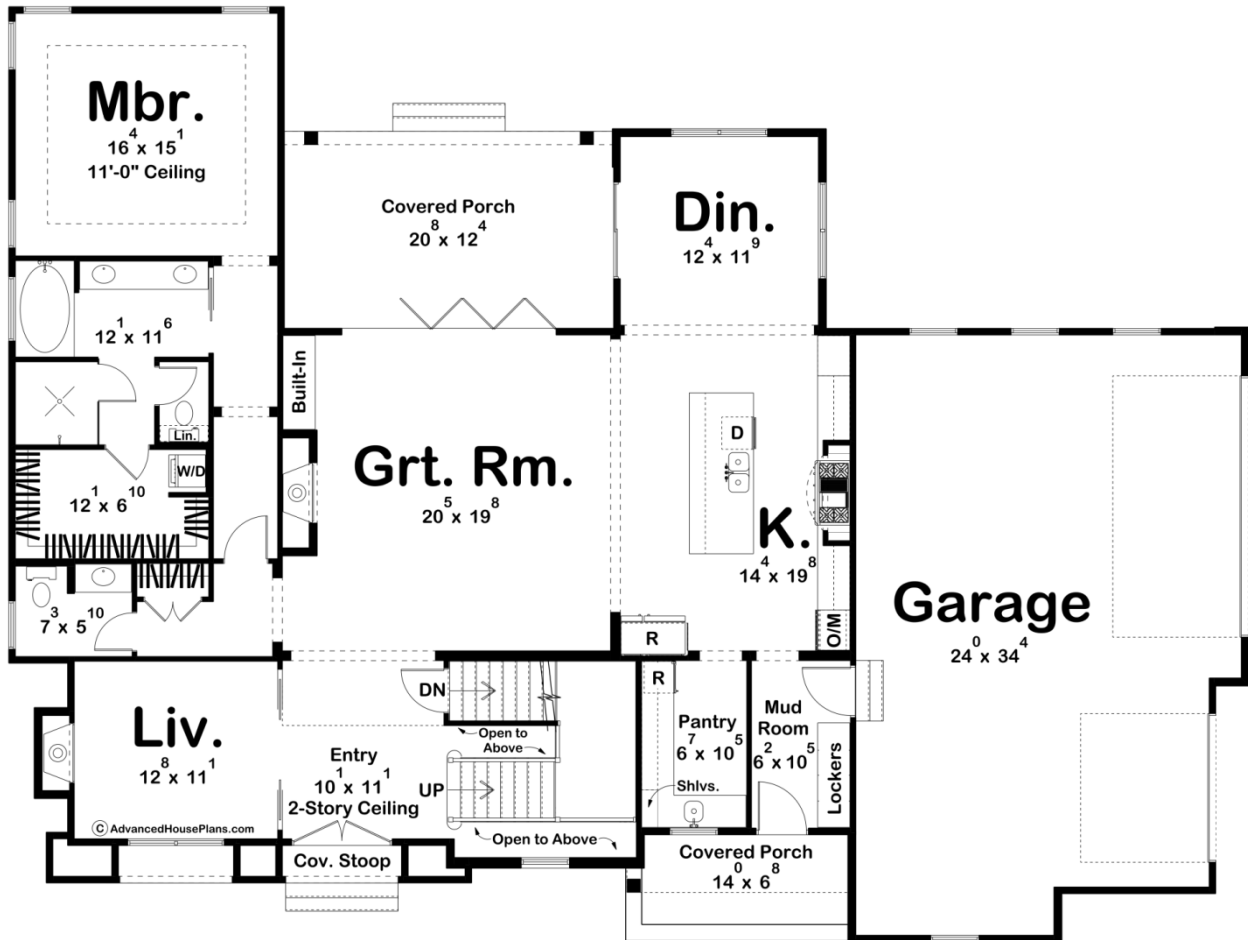
ADVANCED

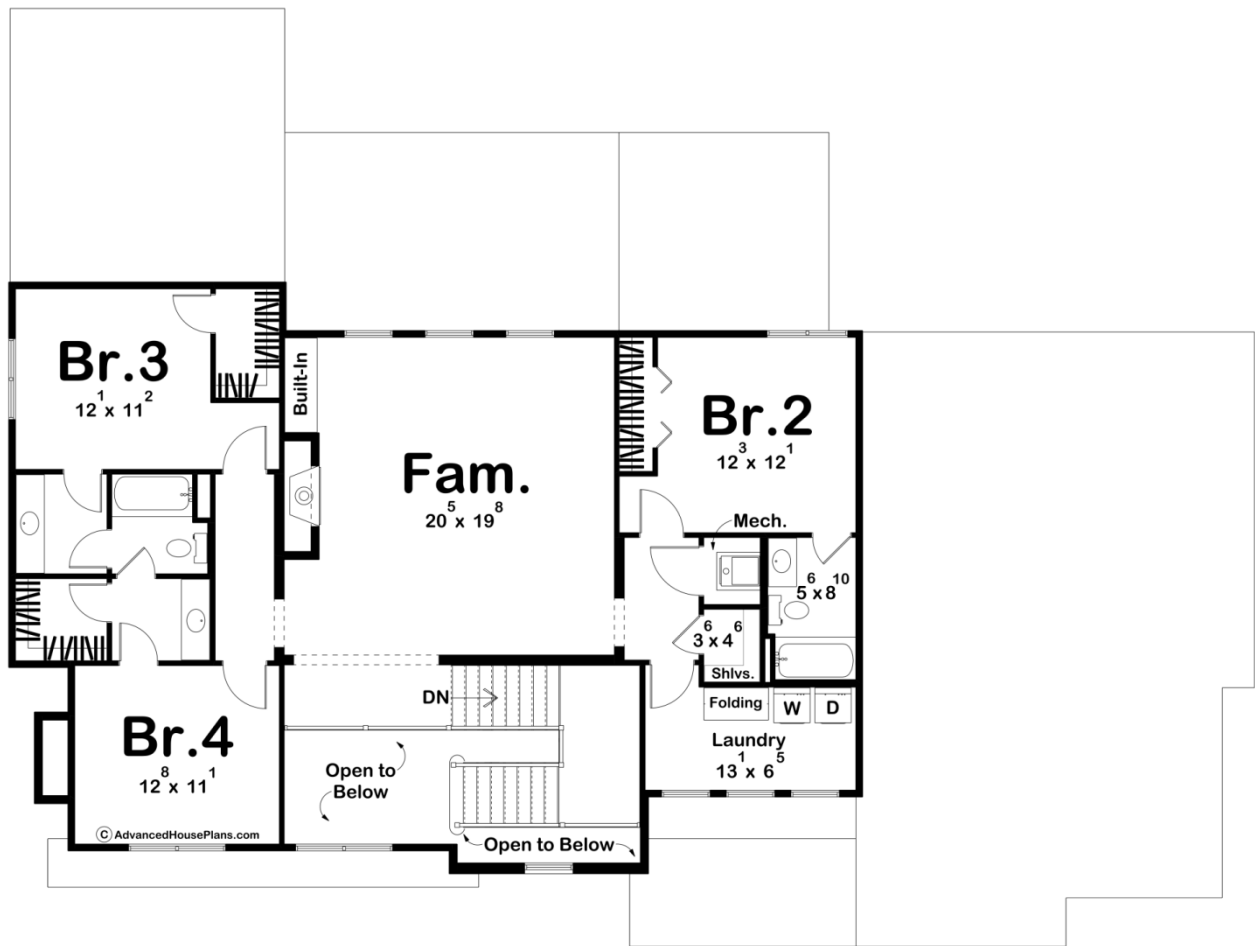
HOUSE PLANS



30538 - Chadbourne Data Sheet

| | | | | | |
|---------------|-----------|------------|-----------|----------------|----------------|
| 3571 SQ FT | 4 BEDS | 4 BATHS | 3 BAYS | 77' 0" WIDE | 58' 0" DEEP |
|---------------|-----------|------------|-----------|----------------|----------------|





Construction Specs

Layout

| | |
|-------------|---|
| Bedrooms | 4 |
| Bathrooms | 4 |
| Garage Bays | 3 |

Square Footage

| | |
|---------------------|--------------|
| Main Level | 2151 Sq. Ft. |
| Second Level | 1420 Sq. Ft. |
| Covered Area | 363 Sq. Ft. |
| Garage | 866 Sq. Ft. |
| Total Finished Area | 3571 Sq. Ft. |

Exterior Dimensions

| | |
|--|--------|
| Width | 77' 0" |
| Depth | 58' 0" |
| Ridge Height | 30' 6" |
| <i>Calculated from main floor line</i> | |

Default Construction Stats

Stats are unique to the individual plan.

| | |
|----------------------------|--|
| Foundation Type | Basement |
| Exterior Wall Construction | 2x4 |
| Roof Pitches | Primary 8/12, Secondary 14/12, 10/12, 4/12 |
| Foundation Wall Height | 9' |
| Main Wall Height | 10' |
| Second Wall Height | 8' |

Plan Description

This 1.5-story modern farmhouse exudes charm and functionality, with a harmonious blend of board-and-batten siding, thinset stone, and stucco accents on the exterior. The home features a 3-car side-load garage, offering ample space and a clean facade. A small, welcoming covered stoop leads to the entryway, while the rear of the home boasts a spacious covered porch, perfect for outdoor relaxation. Inside, the two-story foyer makes a dramatic first impression, with a cozy living room set just off to the side. At the heart of the home lies a large, open great room, seamlessly connected to the kitchen and dining area. The kitchen is a chef's dream, highlighted by a stunning arched hood above the stovetop as a central focal point. A generously sized walk-in pantry ensures ample storage for culinary essentials. The main floor is home to the master suite, which offers both luxury and practicality. The master bedroom connects to a private spa-like bathroom with dual sinks and a spacious walk-in closet that conveniently includes a stackable washer and dryer. Upstairs, the second level features three additional bedrooms and two well-appointed bathrooms. At its center is a large family room with a cozy fireplace, providing a versatile gathering space for relaxation and entertainment. With its functional layout, modern finishes, and farmhouse charm, this home combines comfort and style in a timeless design.