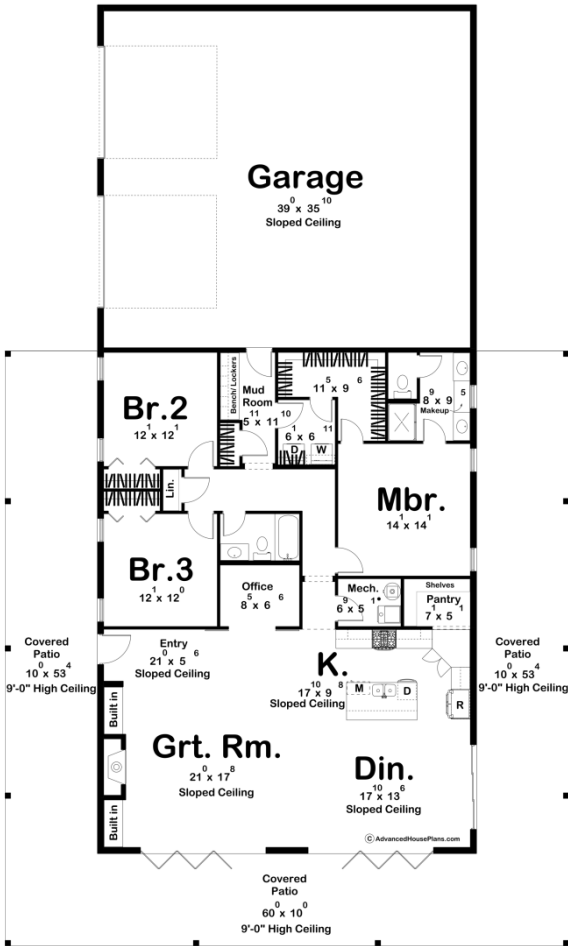




30430 - Center Hill Data Sheet

2113 SQ FT	3 BEDS	2 BATHS	2 BAYS	60' 0" WIDE	100' 0" DEEP
---------------	-----------	------------	-----------	----------------	-----------------



Construction Specs

Layout

Bedrooms

Bathrooms	2
Garage Bays	2
Square Footage	
Main Level	2113 Sq. Ft.
Covered Area	1667 Sq. Ft.
Garage	1453 Sq. Ft.
Total Finished Area	2113 Sq. Ft.
Exterior Dimensions	
Width	60' 0"
Depth	100' 0"
Ridge Height <i>Calculated from main floor line</i>	19' 9"
Default Construction Stats <i>Stats are unique to the individual plan.</i>	
Foundation Type	Slab
Exterior Wall Construction	2x6
Roof Pitches	Primary 2/12, Secondary Flat
Main Wall Height	12'

Plan Description

Step through the entrance of this modern barndominium into an open floor plan that effortlessly combines the living, dining, and kitchen areas. This creates a spacious and inviting atmosphere, perfect for family gatherings or entertaining friends. The kitchen is a culinary haven with a walk-in pantry, providing ample storage for all your essentials. Venture further into the home, and you'll discover three generously sized bedrooms, each offering a comfortable and private space for residents or guests. The master bedroom is a sanctuary with the added luxury of a walk-in closet, providing both functionality and style. Adjacent to the living space, an office offers a dedicated work area, ideal for those who work remotely or require a quiet place for productivity. This thoughtful addition caters to the demands of a modern lifestyle. Step outside onto the covered patio, an extension of your living space, perfect for enjoying the fresh air or hosting gatherings. It seamlessly connects the indoors with the outdoors, offering a versatile space for relaxation and entertainment.