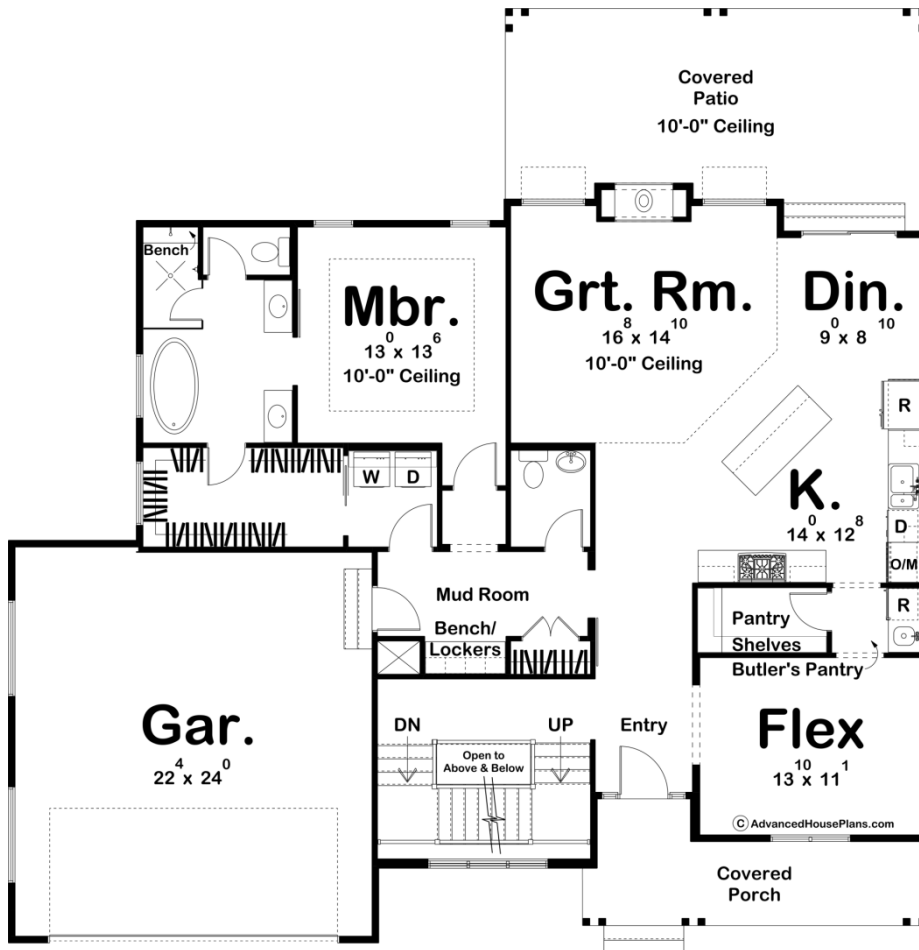
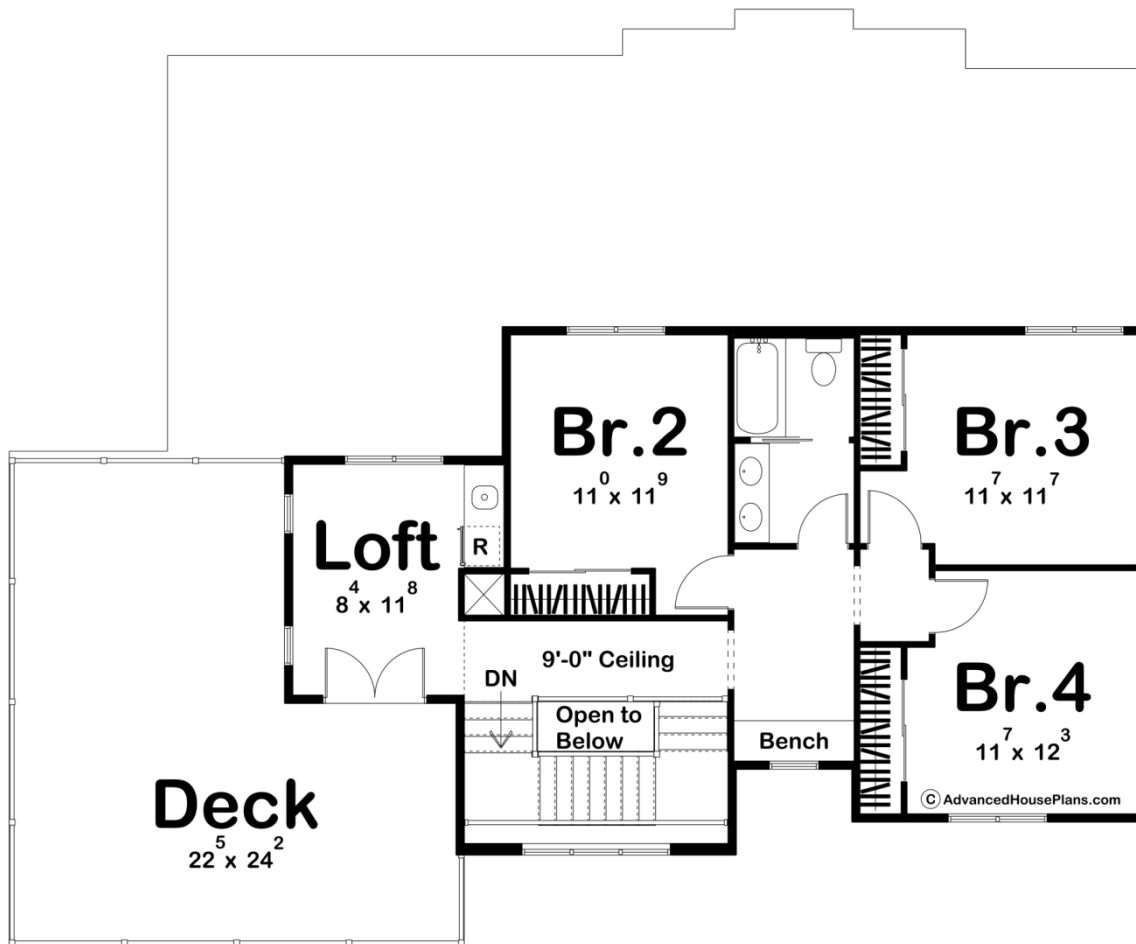




**30128 - Cartwright Data Sheet**

2499 SQ FT	4 BEDS	3 BATHS	2 BAYS	58' 0" WIDE	59' 0" DEEP
---------------	-----------	------------	-----------	----------------	----------------





## Construction Specs

### Layout

Bedrooms	4
Bathrooms	3
Garage Bays	2

### Square Footage

Main Level	1635 Sq. Ft.
Second Level	864 Sq. Ft.
Covered Area	458 Sq. Ft.
Garage	558 Sq. Ft.
Total Finished Area	2499 Sq. Ft.

### Exterior Dimensions

Width	58' 0"
Depth	59' 0"

### Default Construction Stats

*Stats are unique to the individual plan.*

Foundation Type	Basement
Exterior Wall Construction	2x4
Roof Pitches	10/12 Primary, 3/12 4/12 Secondary
Foundation Wall Height	9'
Main Wall Height	9'
Second Wall Height	8'

## Plan Description

The gorgeous Cartwright plan is a beautiful modern farmhouse style house plan. The stunning exterior combines board and batten siding and wood accents with the party deck above the garage for an amazing curb appeal. Just inside you will be amazed by the functional living space layout. The large kitchen with a walk-in pantry flows perfectly into the great room that is warmed by a double-sided roaring fireplace. The kitchen also has a passthrough that leads to the functional flex room. The flex room can be used as a formal dining room, office or living room. The master suite is perfectly situated with his/her vanities, a soaking tub, and an enclosed toilet. The master closet has functional access to the laundry room. Just up the beautiful stair tower, you will find 3 bedrooms that share a conveniently located hall bathroom. This house takes your entertaining game up a level with great outdoor spaces. Upstairs, a loft with a wet bar leads to a massive balcony over the garage. A large covered patio with a fireplace can be accessed off of the rear of the home.