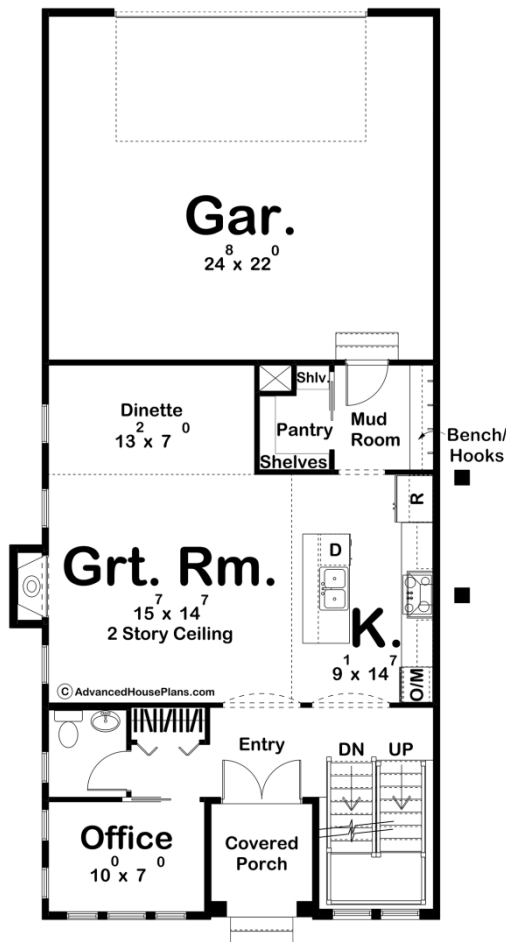
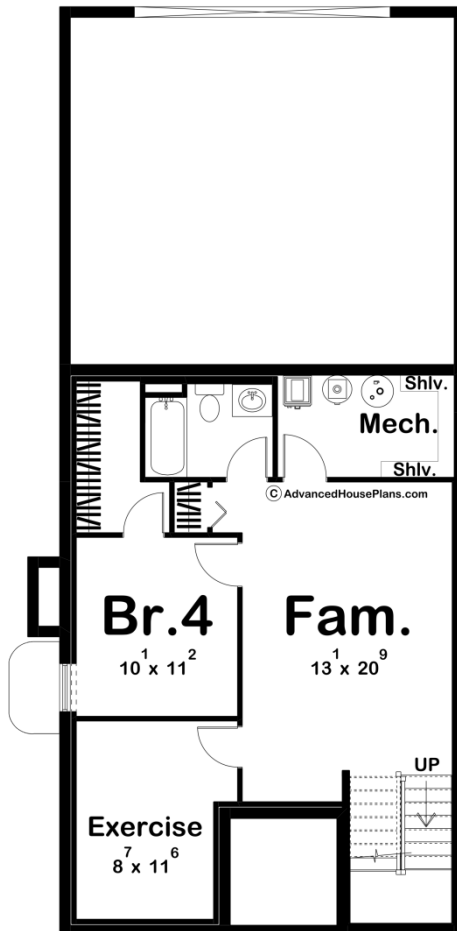
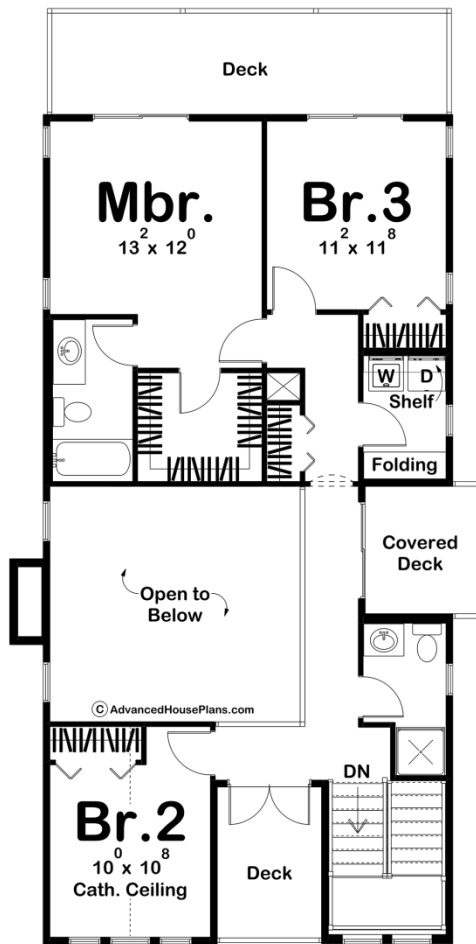




**29941 - Cara Data Sheet**

1723 SQ FT	3 BEDS	3 BATHS	2 BAYS	30' 0" WIDE	58' 0" DEEP
---------------	-----------	------------	-----------	----------------	----------------





Construction Specs

## Layout

Bedrooms	3
Bathrooms	3
Garage Bays	2

## Square Footage

Main Level	843 Sq. Ft.
Second Level	880 Sq. Ft.
Covered Area	49 Sq. Ft.
Garage	572 Sq. Ft.
Total Finished Area	1723 Sq. Ft.

## Exterior Dimensions

Width	30' 0"
Depth	58' 0"
Ridge Height <i>Calculated from main floor line</i>	27'

## Default Construction Stats

*Stats are unique to the individual plan.*

Foundation Type	Basement
Exterior Wall Construction	2x4
Roof Pitches	4/12 Primary, 12/12 Secondary
Foundation Wall Height	9'
Main Wall Height	9'
Second Wall Height	9'

## Plan Description

The Cara plan is an elegant Modern Cottage style house plan. At just under 30' wide, this plan is a great fit for more narrow lots. The exterior of the home showcases stucco with brick and features lots of windows. Just inside the entry, you'll find a wonderful office to the left along with a powder bathroom. The great room, dinette, and kitchen flow seamlessly in an open layout. The great room is warmed by a cozy fireplace. The kitchen includes a large working island with a snack bar and a walk-in pantry. On the second level, you'll find 3 bedrooms. The master suite includes its own bathroom and a large walk-in closet. Bedrooms 2 and 3 share a centrally located hall bathroom. Back on the main level, the home's 2 car rear load garage accesses the home through a mudroom with a bench and coat hooks. An optional finished basement adds 706 sq. ft. and includes a family room, an exercise room, and an additional bedroom with a walk-in closet.