

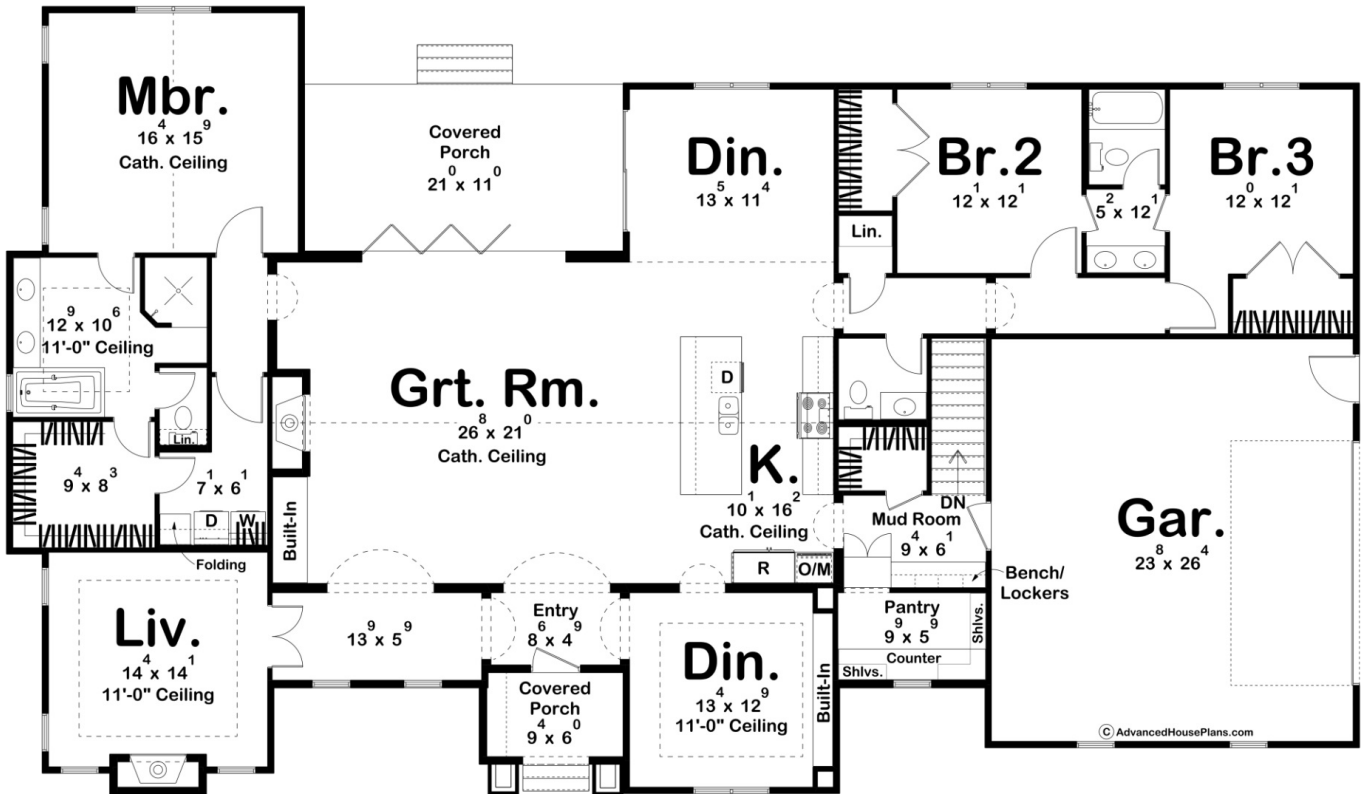
ADVANCED

HOUSE PLANS

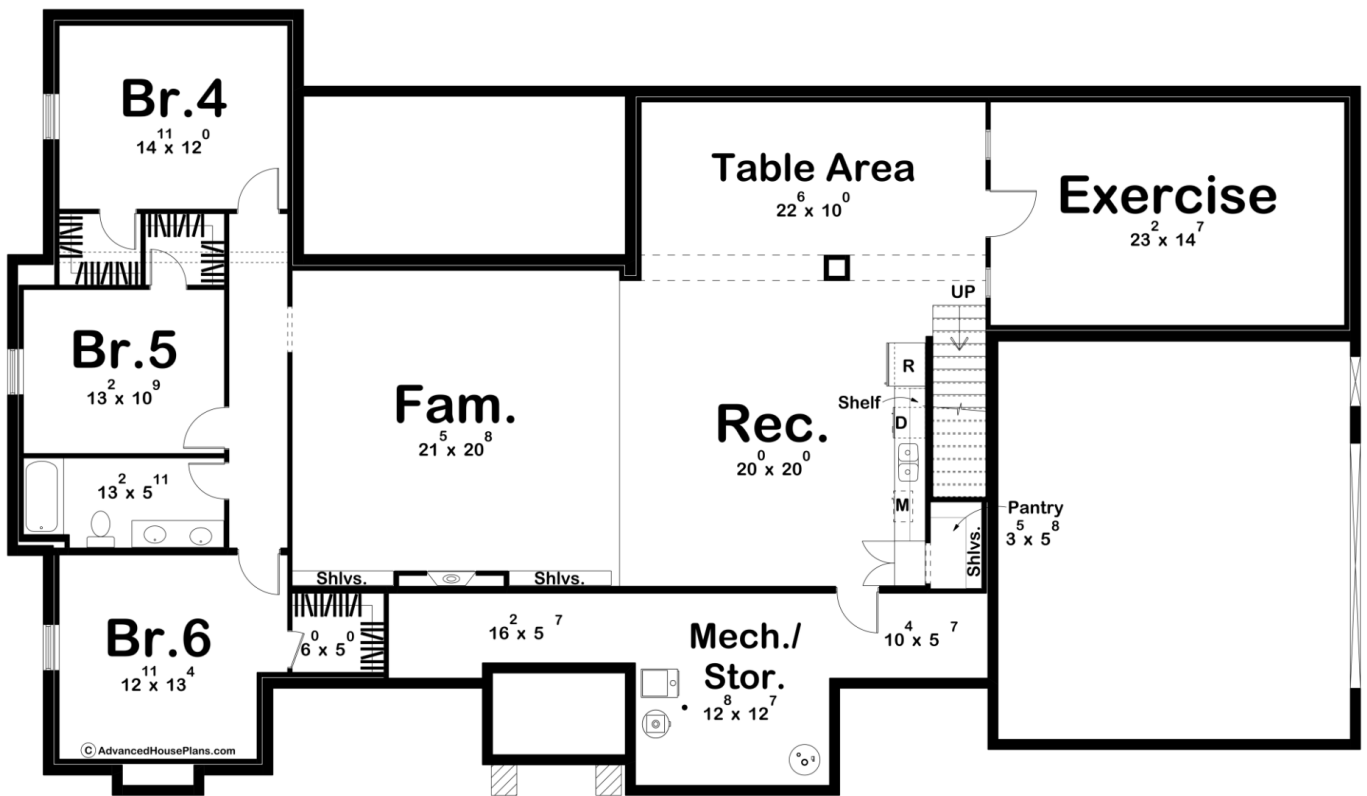


30533 - Campanella Data Sheet

2918 SQ FT	3 BEDS	3 BATHS	2 BAYS	88' 4" WIDE	51' 4" DEEP
---------------	-----------	------------	-----------	----------------	----------------



© AdvancedHousePlans.com



Construction Specs

Layout

Bedrooms	3
Bathrooms	3
Garage Bays	2

Square Footage

Main Level	2918 Sq. Ft.
Covered Area	281 Sq. Ft.
Garage	645 Sq. Ft.
Total Finished Area	2918 Sq. Ft.

Exterior Dimensions

Width	88' 4"
Depth	51' 4"
Ridge Height	27' 5"
<i>Calculated from main floor line</i>	

Default Construction Stats

Stats are unique to the individual plan.

Foundation Type	Basement
Exterior Wall Construction	2x4
Roof Pitches	Primary 10/12, Secondary 14/12
Foundation Wall Height	9'
Main Wall Height	10'

Plan Description

This charming single-story modern cottage house combines elegance and cozy simplicity with a spacious, open floor plan. The exterior features light-colored stucco walls complemented by natural stone and warm wood accents, blending rustic charm with modern lines. Upon entering, you're greeted by an airy great room that flows seamlessly into the kitchen, all beneath a soaring cathedral ceiling that enhances the sense of space and openness. A cozy dinette space sits right off the kitchen for more casual meals, while a formal dining room nearby provides a more sophisticated option for gatherings. The layout includes a comfortable additional living room, ideal for quiet relaxation or family activities. In a split-bedroom design, the master suite is privately located on the opposite side of the house from the two secondary bedrooms, ensuring tranquility. The master bedroom is a serene retreat with its own cathedral ceiling, adding height and grandeur. The finished basement plan offers an additional 2405 sq ft. of finished space. The Campanella plan offers modern cottage charm with functional design for both relaxed living and entertaining.