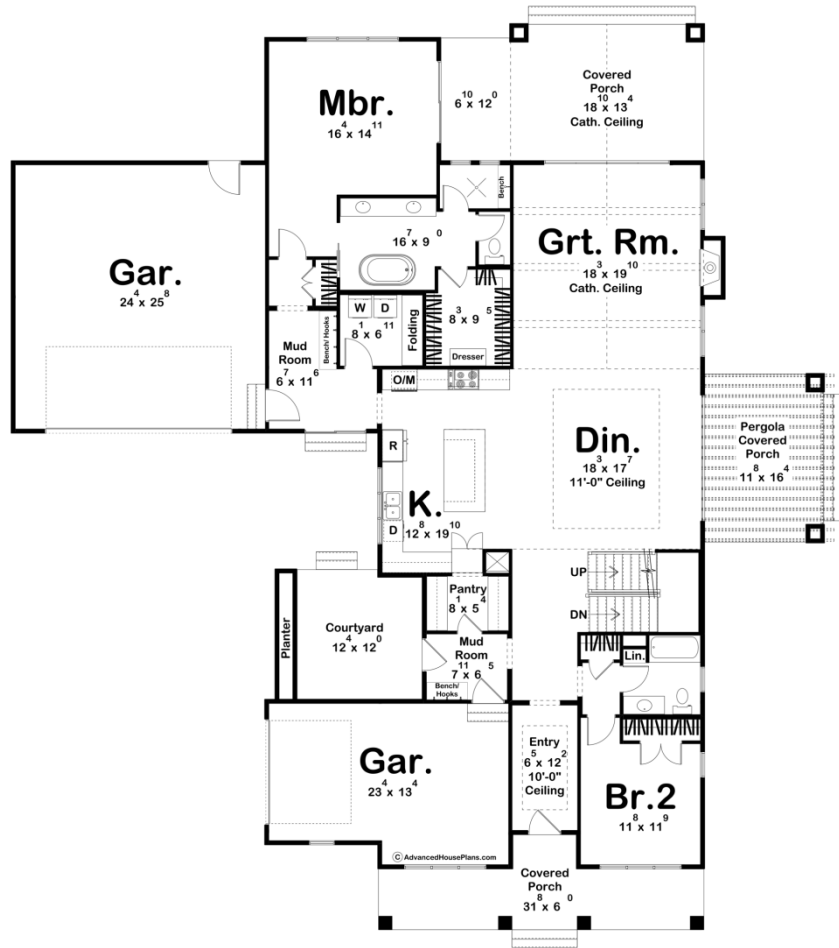
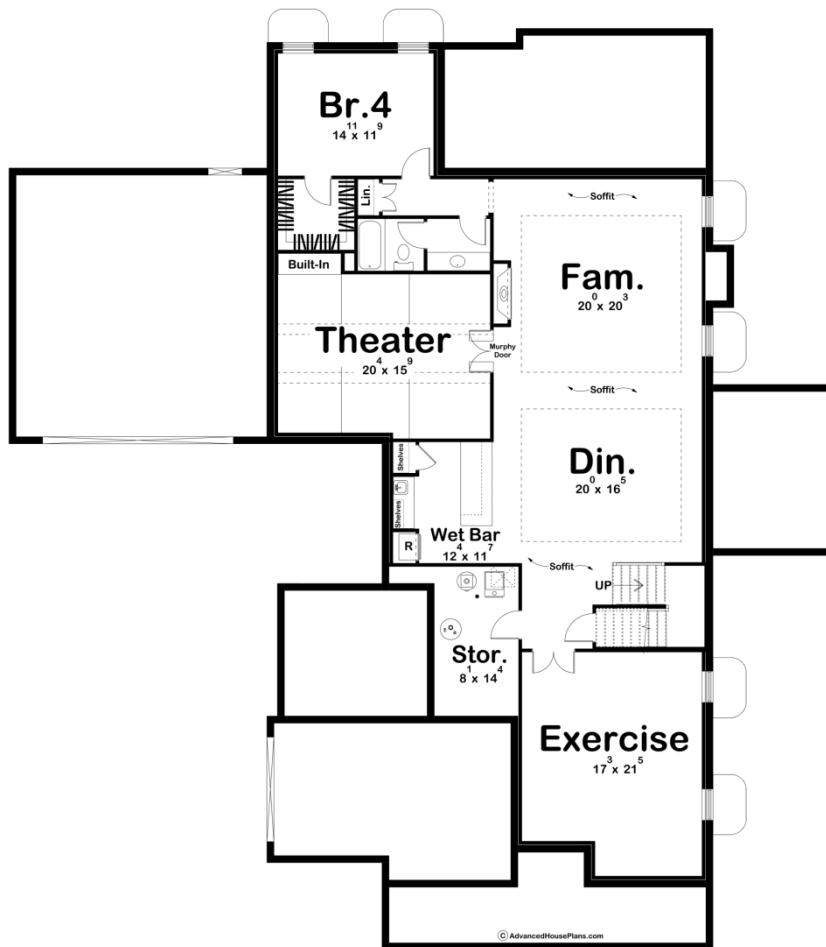
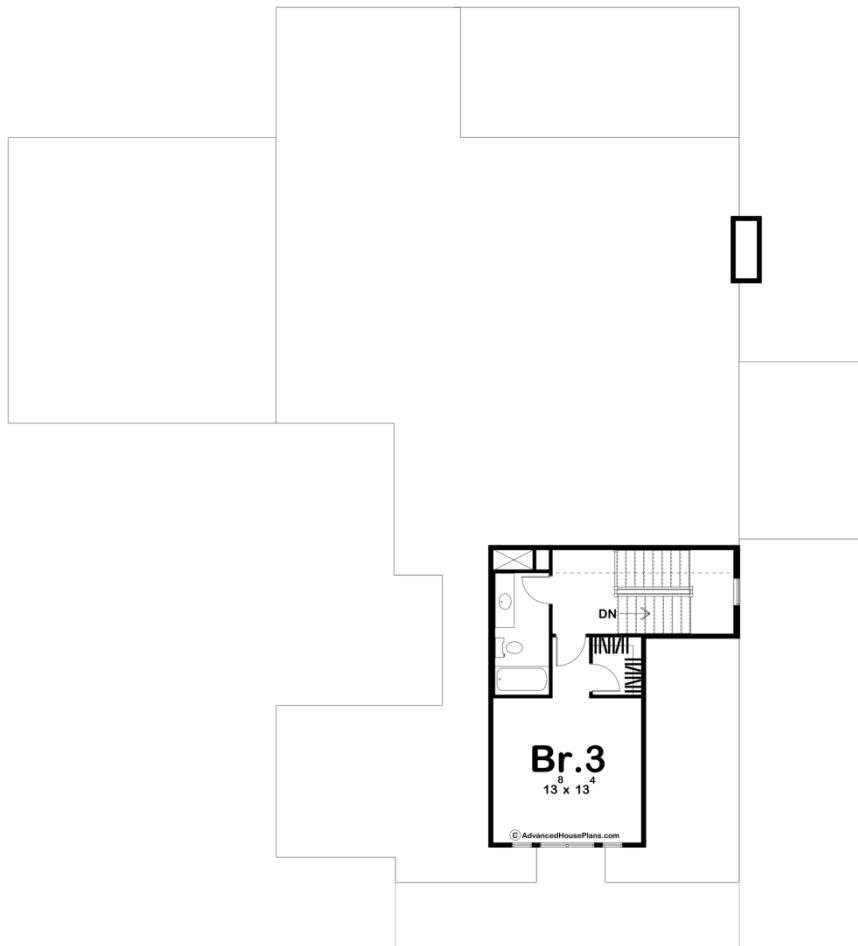




30179 - Calderwood Data Sheet

2780 SQ FT	3 BEDS	3 BATHS	3 BAYS	79' 0" WIDE	88' 0" DEEP
---------------	-----------	------------	-----------	----------------	----------------





Construction Specs

Layout

Bedrooms	3
Bathrooms	3
Garage Bays	3

Square Footage

Main Level	2402 Sq. Ft.
Second Level	378 Sq. Ft.
Covered Area	544 Sq. Ft.
Garage	1009 Sq. Ft.
Total Finished Area	2780 Sq. Ft.

Exterior Dimensions

Width	79' 0"
Depth	88' 0"
Ridge Height <i>Calculated from main floor line</i>	25' 0"

Default Construction Stats

Stats are unique to the individual plan.

Foundation Type	Basement
Exterior Wall Construction	2x4
Roof Pitches	Primary 8/12, Secondary 3/12
Foundation Wall Height	9'
Main Wall Height	10'
Second Wall Height	8'

Plan Description

The house plan features a spacious and welcoming open concept living space, perfect for entertaining and family gatherings. The main floor includes two bedrooms, providing comfortable accommodations for family members or guests. The great room, dining area, and kitchen are all integrated into a single, expansive living space, with plenty of room for cooking, dining, and relaxation. The kitchen is designed with modern appliances and ample counter and storage space, making it a joy to cook and entertain in. The master suite is also located on the main floor, offering privacy and comfort for the homeowner. The master bedroom includes a spacious walk-in closet and a luxurious ensuite bathroom, featuring a soaking tub, dual vanities, and a separate shower. The second floor of the house plan includes an additional bedroom and bathroom, providing a private space for a teenager or visiting family member. The upstairs bedroom could also be used as a home office or gym, offering flexibility to the homeowner. The house plan also features split garages, providing plenty of space for two cars and extra storage. This design

allows for easy access to the garage from the main living area and provides additional privacy for the homeowner. Overall, this house plan is designed with both style and practicality in mind, offering a comfortable and welcoming living space for families and guests alike.