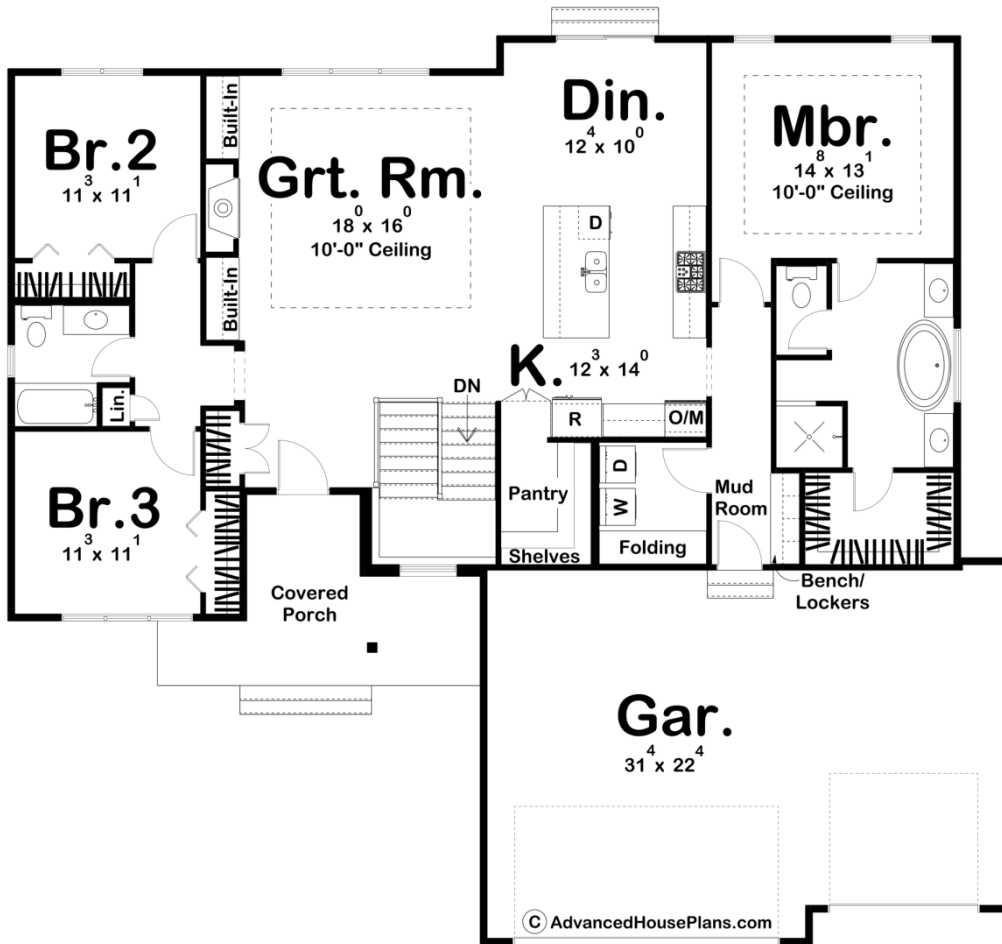




**30132 - Caballero Way Data Sheet**

1824 SQ FT	3 BEDS	2 BATHS	3 BAYS	60' 8" WIDE	55' 0" DEEP
---------------	-----------	------------	-----------	----------------	----------------



**Construction Specs**

Layout

Bedrooms

Bathrooms	2
Garage Bays	3

### Square Footage

Main Level	1824 Sq. Ft.
Covered Area	76 Sq. Ft.
Garage	703 Sq. Ft.
Total Finished Area	1824 Sq. Ft.

### Exterior Dimensions

Width	60' 8"
Depth	55' 0"

### Default Construction Stats

*Stats are unique to the individual plan.*

Foundation Type	Basement
Exterior Wall Construction	2x4
Roof Pitches	8/12 Primary, 4/12 6/12 Secondary
Foundation Wall Height	9'
Main Wall Height	9'

## Plan Description

Featuring a beautiful modern exterior façade, the Caballero Way is a charming 1 story house plan with a great floor plan to match! The interior features an open floor plan that feels huge! It's got a deep walk-in pantry, hidden by cabinet-faced doors, and tons of space in the mudroom to keep your life, and this beautiful home, organized. The great room is warmed by a fireplace that is flanked by built-in bookshelves. On the right side of the home, the master suite is generously sized with a shower and spa tub and a spacious walk-in closet. On the opposite side of the home, bedrooms 2 and 3 share a centrally located hall bathroom.