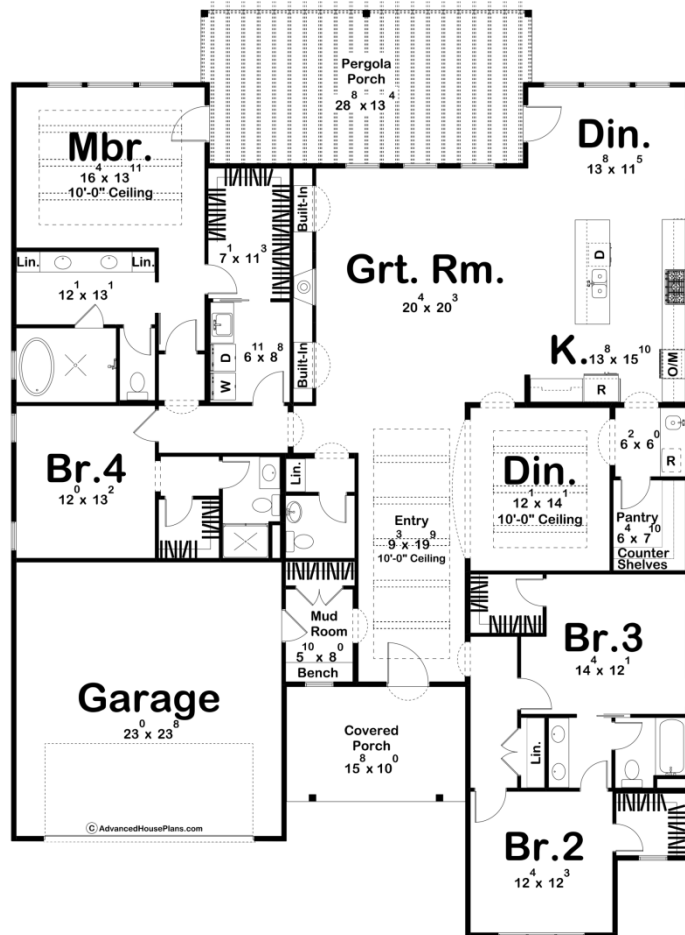




30365 - Butte Valley Data Sheet

2987 SQ FT	4 BEDS	4 BATHS	2 BAYS	58' 8" WIDE	80' 0" DEEP
---------------	-----------	------------	-----------	----------------	----------------



Construction Specs

Layout

Bedrooms

Bathrooms	4
Garage Bays	2

Square Footage

Main Level	2987 Sq. Ft.
Covered Area	157 Sq. Ft.
Garage	564 Sq. Ft.
Total Finished Area	2987 Sq. Ft.

Exterior Dimensions

Width	58' 8"
Depth	80' 0"
Ridge Height <i>Calculated from main floor line</i>	15' 2"

Default Construction Stats

Stats are unique to the individual plan.

Foundation Type	Slab
Exterior Wall Construction	2x4
Roof Pitches	Flat
Main Wall Height	9'

Plan Description

Nestled under the warm Mediterranean sun, the Butte Valley stands as an embodiment of timeless charm and modern luxury. With its graceful wood accents and stucco-clad walls, it whispers stories of the old world, while inside, it embraces the contemporary needs of a family yearning for a tranquil retreat. In this splendid abode, four bedrooms await, each a haven in its own right. The jaw-dropper is the master suite—a realm of serenity unto itself. Here, the lucky occupants revel in the luxury of a private bathroom and a spacious walk-in closet, a sanctuary of calm amidst the bustling world outside. As daylight streams through the large windows, the heart of the home comes alive. An open-concept design seamlessly unites the kitchen, great room, and the adjacent dinette, where family bonds grew stronger, and guests feel immediately welcomed. The kitchen itself is a culinary masterpiece, a place where gourmet aspirations come to life. Modern appliances, ample counter space, and a central island transform the act of cooking into an art form. For those special evenings when dinner is more than just a meal, a separate formal dining area waits with open arms. Here, elegance reigns supreme, complemented by a charming wet bar servery nearby—a delightful bonus that adds sophistication to every gathering. Bedrooms two and three share a cleverly designed Jack and Jill bathroom. Privacy for each, but a shared connection—a perfect arrangement for family harmony. Meanwhile, bedroom four claims its own private bathroom, offering a secluded retreat for a teenager, guest, or anyone seeking solitude. Outside, the Spanish-inspired architecture charmed with stucco walls, graceful archways, and a palette that embraced the warmth of the region. The house wears its heritage proudly, a testament to a timeless design that transcended the ages. The Butte Valley is more than just a house; it is a living story of elegance and modern comfort, a sanctuary for a family to create cherished memories. As the sun dips below the horizon, casting a warm glow over the façade, it beckons its inhabitants to come together, to live, and to bask in the enduring

allure of Spanish style living.