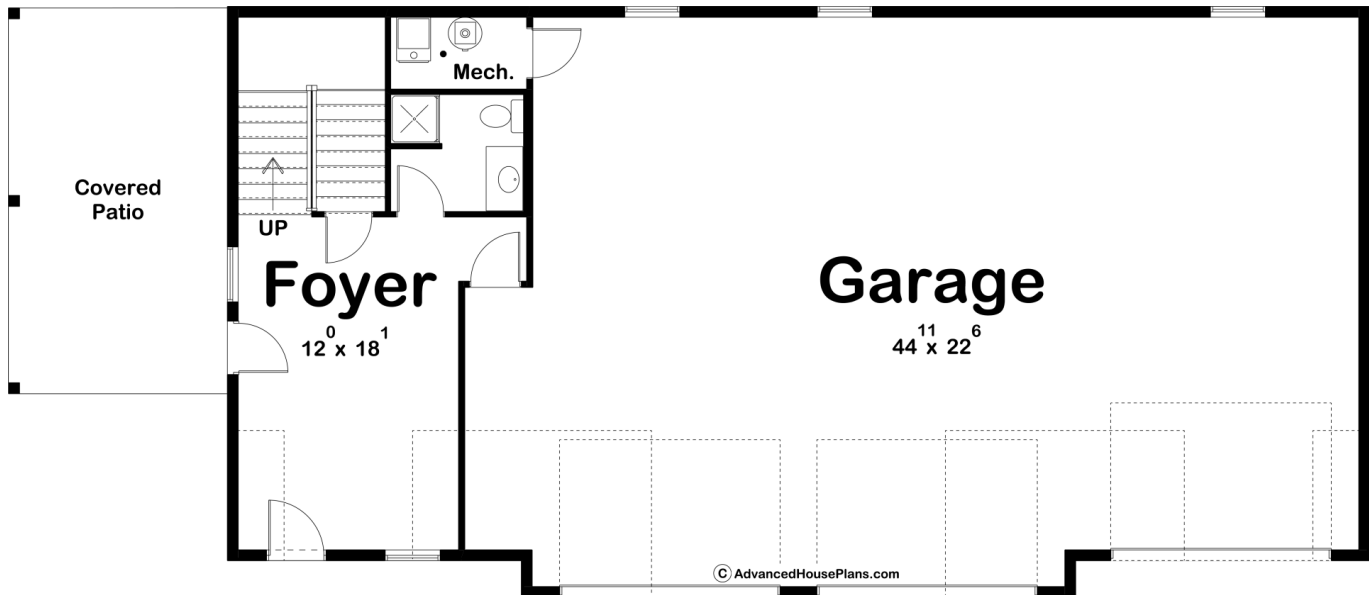


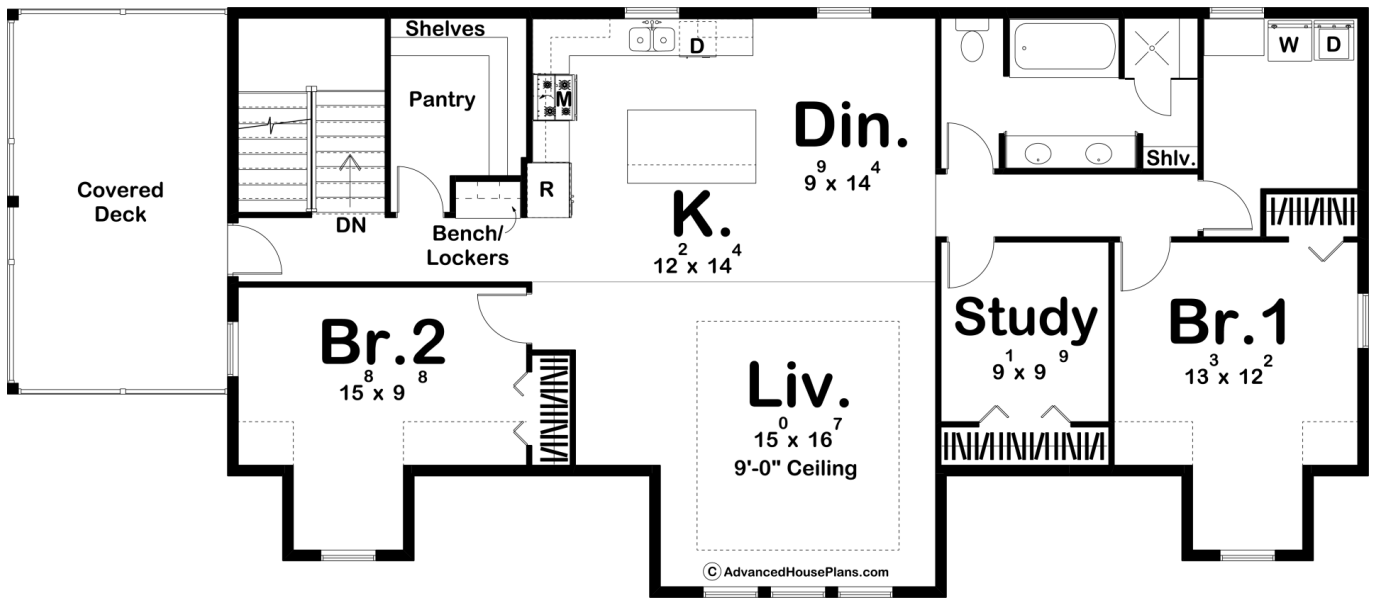
**ADVANCED**  
HOUSE PLANS



### 29897 - Burwell Data Sheet

2176 SQ FT	2 BEDS	2 BATHS	3 BAYS	74' 0" WIDE	32' 0" DEEP
---------------	-----------	------------	-----------	----------------	----------------





## Construction Specs

### Layout

Bedrooms	2
Bathrooms	2
Garage Bays	3

### Square Footage

Main Level	398 Sq. Ft.
Second Level	1778 Sq. Ft.
Total Finished Area	2176 Sq. Ft.

### Exterior Dimensions

Width	74' 0"
Depth	32' 0"

### Default Construction Stats

*Stats are unique to the individual plan.*

Foundation Type	Slab
Exterior Wall Construction	2x6

Roof Pitches	12/12 Primary, 6/12 Secondary
Main Wall Height	9'
Second Wall Height	8'

## Plan Description

The Burwell is a stunning traditional style carriage house that features a large 2 bedroom apartment above a 3 car garage. The lower level includes 3 single car bays and a large foyer with a bathroom. Upstairs, you'll find a wonderful 2 bedroom apartment. The full kitchen includes a large kitchen island and a massive walk-in pantry. The kitchen, dining room, and living room flow seamlessly together in an open layout.