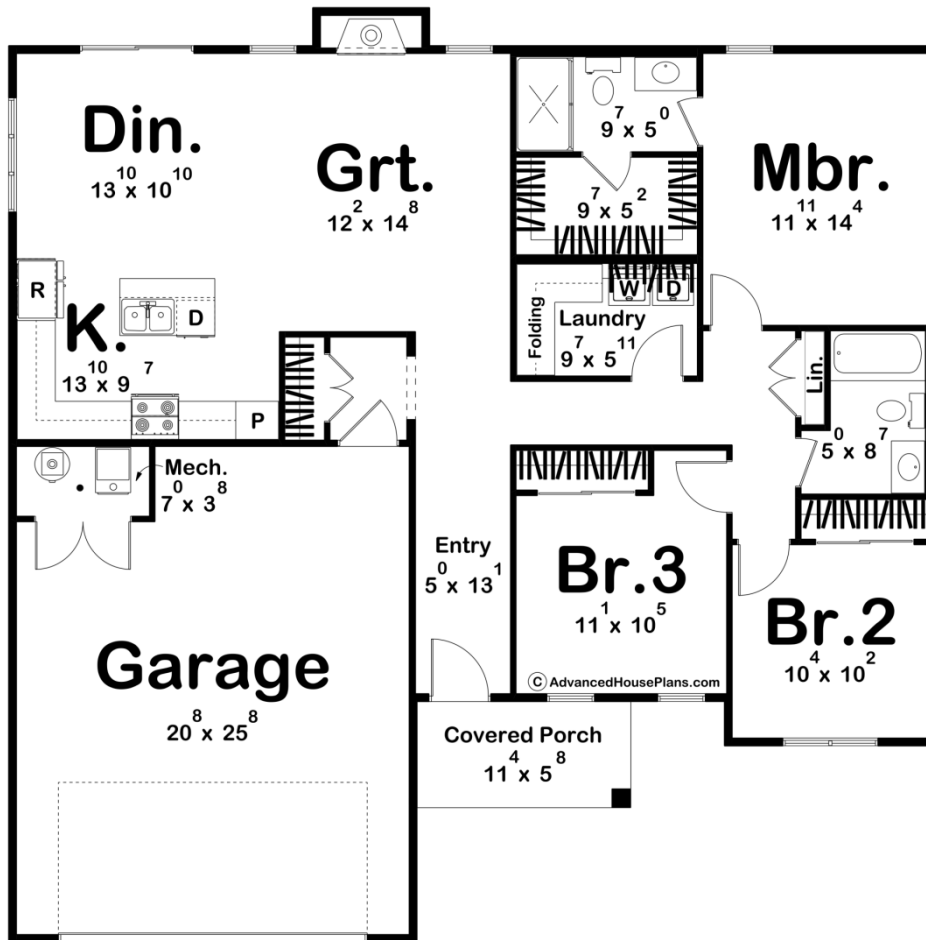




**30684 - Brownfield Data Sheet**

1417 SQ FT	3 BEDS	2 BATHS	2 BAYS	48' 8" WIDE	49' 0" DEEP
---------------	-----------	------------	-----------	----------------	----------------



**Construction Specs**

**Layout**

Bedrooms

Bathrooms	2
Garage Bays	2

### Square Footage

Main Level	1417 Sq. Ft.
Covered Area	68 Sq. Ft.
Garage	520 Sq. Ft.
Total Finished Area	1417 Sq. Ft.

### Exterior Dimensions

Width	48' 8"
Depth	49' 0"
Ridge Height <i>Calculated from main floor line</i>	18' 1"

### Default Construction Stats

*Stats are unique to the individual plan.*

Foundation Type	Slab
Exterior Wall Construction	2x4
Roof Pitches	Primary 6/12, Secondary 4/12
Main Wall Height	9'

## Plan Description

This affordable one-story home offers a blend of charm and functionality. A welcoming covered front porch invites you into the home, leading to a cozy entryway that flows seamlessly into a spacious great room. Adjacent to the great room is an open-concept dining area and an L-shaped kitchen with a convenient island, perfect for casual meals and entertaining. The layout includes three well-sized bedrooms and two full bathrooms. The primary bedroom features a private en-suite bathroom and a walk-in closet, while the secondary bedrooms share a hallway bath, making it ideal for families or guests. A two-car garage offers ample storage and parking space, and its proximity to the main living areas adds everyday convenience. This thoughtfully designed home combines simplicity with modern comfort, making it an excellent choice for budget-conscious buyers seeking style and efficiency.