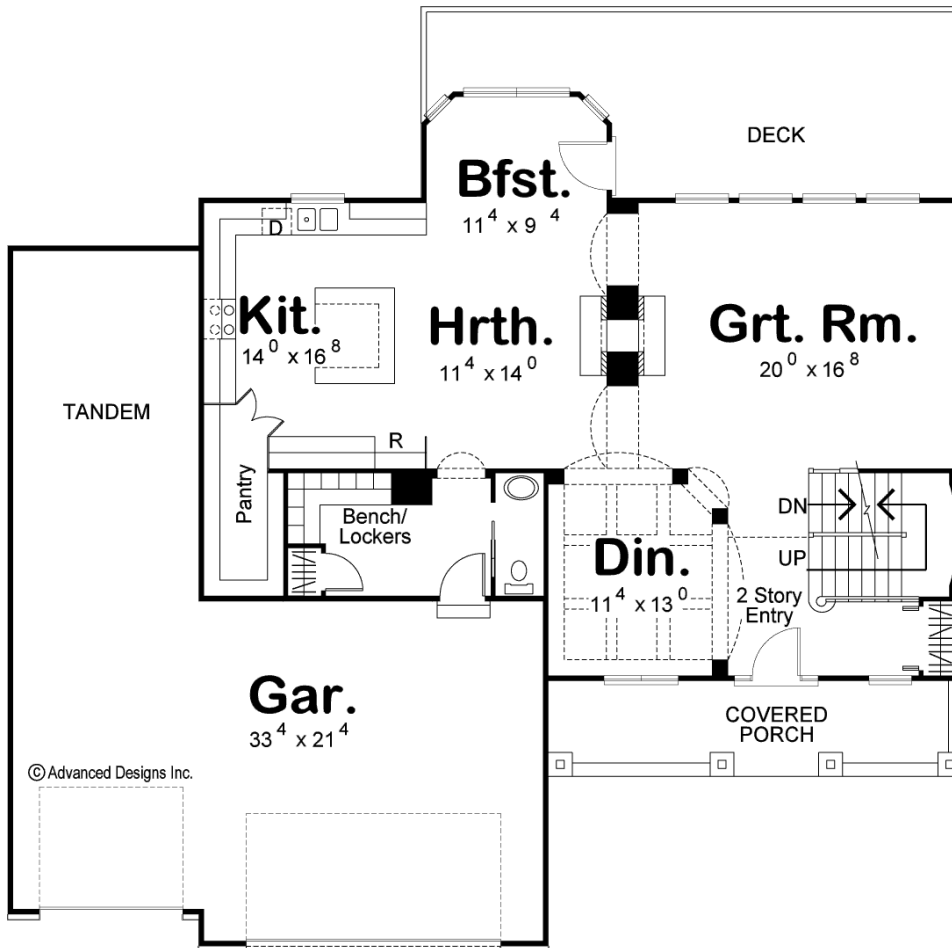
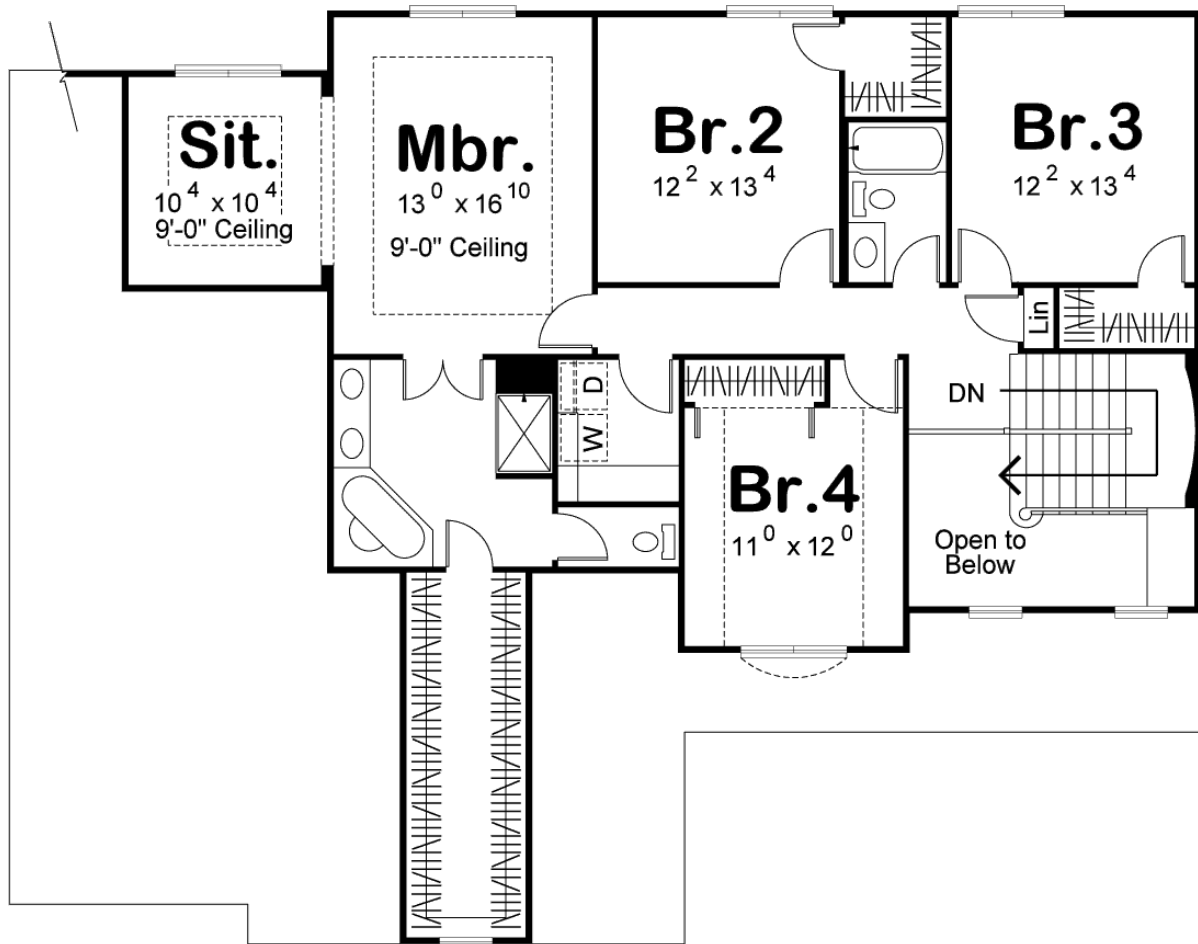




29065 - Brookhaven Data Sheet

2787 SQ FT	4 BEDS	3 BATHS	4 BAYS	60' 0" WIDE	54' 0" DEEP
---------------	-----------	------------	-----------	----------------	----------------





Construction Specs

Layout

Bedrooms	4
Bathrooms	3
Garage Bays	4

Square Footage

Main Level	1400 Sq. Ft.
Second Level	1387 Sq. Ft.
Garage	980 Sq. Ft.
Total Finished Area	2787 Sq. Ft.

Exterior Dimensions

Width	60' 0"
Depth	54' 0"
Ridge Height	28' 0"
<i>Calculated from main floor line</i>	

Default Construction Stats

Stats are unique to the individual plan.

Foundation Type	Basement
Exterior Wall Construction	2x4
Roof Pitches	Primary 7/12, Secondary 12/12
Foundation Wall Height	9'
Main Wall Height	9'
Second Wall Height	8'

Plan Description

Nothing says "home" like a Traditional Farm Style house plan, and this family friendly 2-story design speaks volumes. A quartet of solid columns line the home's covered front porch, which extends a warm welcome to passersby. Inside, a 2-story-high entry area takes in views of the formal dining room and great room beyond. The great room is brightened by a bank of windows to the rear, and it shares a see-thru fireplace with the adjacent hearth room. The hearth room, breakfast area and kitchen combine their spaces to create a delightful area for entertaining or just hanging out. The kitchen itself has a generous amount of counter space in addition to a central island workspace. A deep, walk-in pantry offers plenty of storage space. A mud room with bench, lockers and powder bath provides a practical barrier between the living areas and the smartly designed garage area, which has space for four vehicles. Upstairs, the master suite offers an unexpectedly spacious sitting area, perfect for reading or office work. The master bath, with corner tub, shower and compartmented toilet, opens to an extensive walk-in closet. The nicely sized secondary bedrooms share a centrally located hall bath. An upstairs laundry conveniently serves all bedrooms.